

MEDIA CONTACT
Rosa Mendez
detrmedia@detr.nv.gov

PRESS RELEASE



ONE NEVADA - Growing a Skilled, Diverse Workforce

STEVE SISOLAK
Governor

ELISA CAFFERATA
Director

DAVID SCHMIDT
Chief Economist

RESEARCH AND ANALYSIS BUREAU
UNEMPLOYMENT INSURANCE CLAIMS PRESS RELEASE

Please note: this is the last weekly claims release, as DETR will return to a monthly schedule for the unemployment insurance claims press release.

For Immediate Release
April 2, 2021

Regular initial and continued claims remain flat; PUA initial claims at lowest level since start of program

CARSON CITY, NV - For the week ending March 27, initial claims for unemployment insurance (UI) totaled 11,677, up 4,036 claims, or 52.8%, compared to the previous week's total of 7,641 claims, according to finalized data from the Nevada Department of Employment, Training and Rehabilitation (DETR). Through the week ending March 27, there have been a total of 908,138 initial claims filed since the week ending March 14, 2020.

Continued claims, which represent the current number of insured unemployed workers filing weekly for unemployment insurance benefits, totaled 70,509 claims, a decrease of 1,216 claims, or 1.7%, from the previous week's total of 71,725. Continued claims have seen little change in the last six weeks.

Nevada's Pandemic Emergency Unemployment Compensation (PEUC) program, which provides benefits to individuals who have exhausted their regular unemployment benefits, saw 98,706 claims filed in the week, a decline of 8,350 claims from last week's total of 107,056. The passage of the American Rescue Plan Act (ARPA) significantly expanded the number of weeks that many workers will be able to collect pandemic-related unemployment insurance benefits. ARPA extended Pandemic Unemployment Assistance and Pandemic Emergency Unemployment Compensation through the week ending September 4, 2021.

Nevada's State Extended Benefit (SEB) program which provides benefits to individuals who have exhausted both their regular and PEUC program benefits. Nevada saw 25,549 claims filed in the week, a decrease of 2,747 claims from a week ago.

The insured unemployment rate for the regular UI program, which is the ratio of regular continued claims in a week to the total number of jobs covered by the unemployment insurance system (also known as covered employment), fell to 5.3% from the previous week's rate of 5.4%. Including claimants in the benefit extension programs, the rate, more appropriately called the extended insured unemployment rate, was 14.7%. It should be noted that the calculation of the insured unemployment rate is different from that of the state's total unemployment rate.

The Pandemic Unemployment Assistance (PUA) program, which provides benefits for self-employed, 1099 contract workers, and gig workers saw 746 initial claims filed in the week ending March 27, a decline of 2,227

claims, or 74.9%, from last week's total of 2,973. Through the week ending March 27, there have been a total of 1,106,654 PUA initial claims filed.

There were 58,548 PUA continued claims filed in the week ending March 27, a decrease of 12,382 claims, or 17.5%, from the previous week's revised total of 70,930.

As a reminder, this month DETR will return to a monthly schedule for the unemployment insurance claims press release. The weekly claims report and dashboards will continue to be updated weekly and available at www.nevadaworkforce.com.

State level data from the U.S. Department of Labor can be found here [[DOL Weekly Claims Report](#)]. View the state level unemployment insurance claims report for the week ending March 27 here [[Weekly Report](#)]. A dashboard for Nevada weekly claims can be found here [[Weekly Dashboard](#)]. A monthly claims dashboard can be found here [[Monthly Dashboard](#)] and a monthly claims demographic page can be found here [[Monthly Demographics](#)]. See weekly county claims trends here [[Weekly by County](#)].

To file for regular unemployment in the State of Nevada, please use the online application available 24/7 at <http://ui.nv.gov/css.html>. People unable to file online may file via telephone by calling a UI Claims Call Center between 8 a.m. and 8 p.m., Monday through Friday. Northern UI Call Center: (775) 684-0350; Southern UI Call Center: (702) 486-0350; Rural areas and Out-of-State: (888) 890-8211. Claimants are encouraged to use the internet to file their UI claims, as it is the fastest and most convenient way to file and reserves the phone lines for individuals who are not able to file online. Online filing during non-peak hours, such as early mornings, at night or weekends is also highly recommended. To continue to receive benefits, claimants must file weekly.

DETR is actively working with law enforcement entities and the Department of Labor to detect, prevent and address unemployment fraud. Employers and individuals who believe they have been a victim of unemployment fraud, can file a report with the agency by visiting www.detr.nv.gov and selecting the [Unemployment Fraud tab](#) on the left under "Quick links" and clicking on "Report Fraud to DETR." Once a report is filed with the Department of Employment, Training and Rehabilitation (DETR), nothing else is required by the reporting party. DETR will flag the account so payments are not issued. If needed, the Department may reach out for additional information. To view what additional steps individuals and employers can take if they believe a fraudulent claim has been filed, review DETR's [fraud flyer](#) located on the Bulletin Board at www.detr.nv.gov.

Individuals who may have received a 1099-G who did not file a claim with the State of Nevada, or received an incorrect 1099-G from DETR, can file a report online with the agency by visiting detr.nv.gov, selecting the Unemployment Fraud tab on the left under "Quick links" and then clicking on "[Request a 1099-G Correction](#)".

For Nevada workers who are self-employed, 1099 contract workers, and gig workers, Nevada's Pandemic Unemployment Assistance program (PUA) is available. For further information regarding the PUA program visit, detr.nv.gov/pua#. Individuals will be able to file online at www.employnv.gov or call the PUA Call Center at (800) 603-9681 or 775-298-6007 or 702-998-3081 between 8 a.m. and 8 p.m., Monday through Friday, and Saturday between 8 a.m. and noon.

Claimants are encouraged to visit <http://ui.nv.gov/css.html> and detr.nv.gov/coronavirus to view important announcements and access essential resources. Online tutorial videos are also available in both English and Spanish and can be viewed on the [Nevada Unemployment Insurance](#) YouTube page.

###

Visit us <http://www.nevadaworkforce.com> and Follow us on Twitter: <http://www.twitter.com/NVlabormarket>

ABOUT THE RESEARCH AND ANALYSIS BUREAU

500 E. Third Street, Room 200 | Carson City, Nevada 89713 | 2800 E. St. Louis Ave. | Las Vegas, NV 89104
Phone: (775) 684-3911 | (702) 486-7923 | <https://detr.nv.gov> | Fax: (775) 684-6426 | Fax: (702) 486-7924

The Research and Analysis Bureau is Nevada's premier source for labor market information. A part of DETR, the Bureau is responsible for creating, analyzing, and reporting Nevada's labor market information, in cooperation with the United States Bureau of Labor Statistics (BLS).



State of Nevada Unemployment Insurance Claims

Filing Statistics for Week Ending 3/27/2021

Department of Employment, Training & Rehabilitation

Elisa Cafferata, Director

Lynda Parven, Administrator

David Schmidt, Chief Economist

*Prepared by the Research and Analysis Bureau
Updated: 2021-03-31*

Weekly Federal UI Claim Statistics

UI Initial Claims by Week

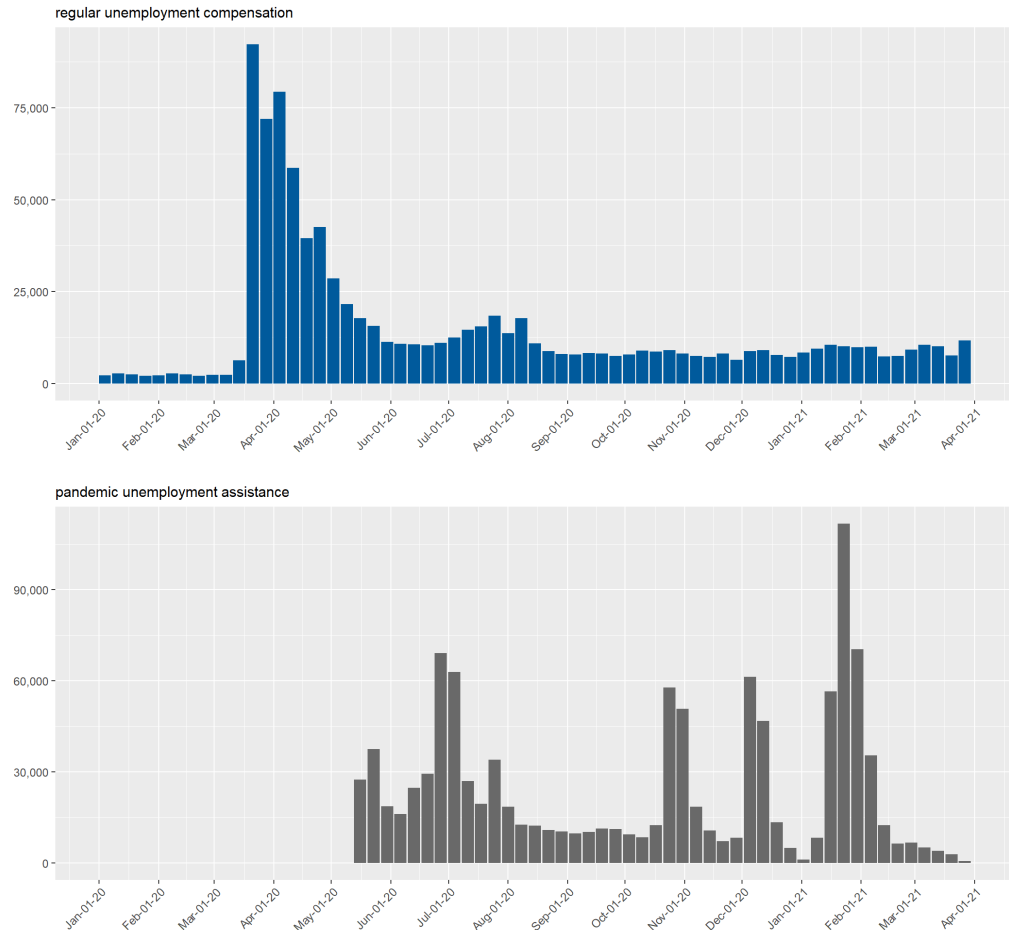
Final initial claims totals for week ending 3/27/2021 (ETA 539).

Regular initial claims totaled 11,677 in the week, up 4,036 claims, or 52.8%, compared to the previous week.

Pandemic Unemployment Assistance (PUA) claims totaled 746 in the week, down 2,227, or 74.9%, compared to the previous week.

A claimant may have filed BOTH a regular initial claim and a PUA initial claim.

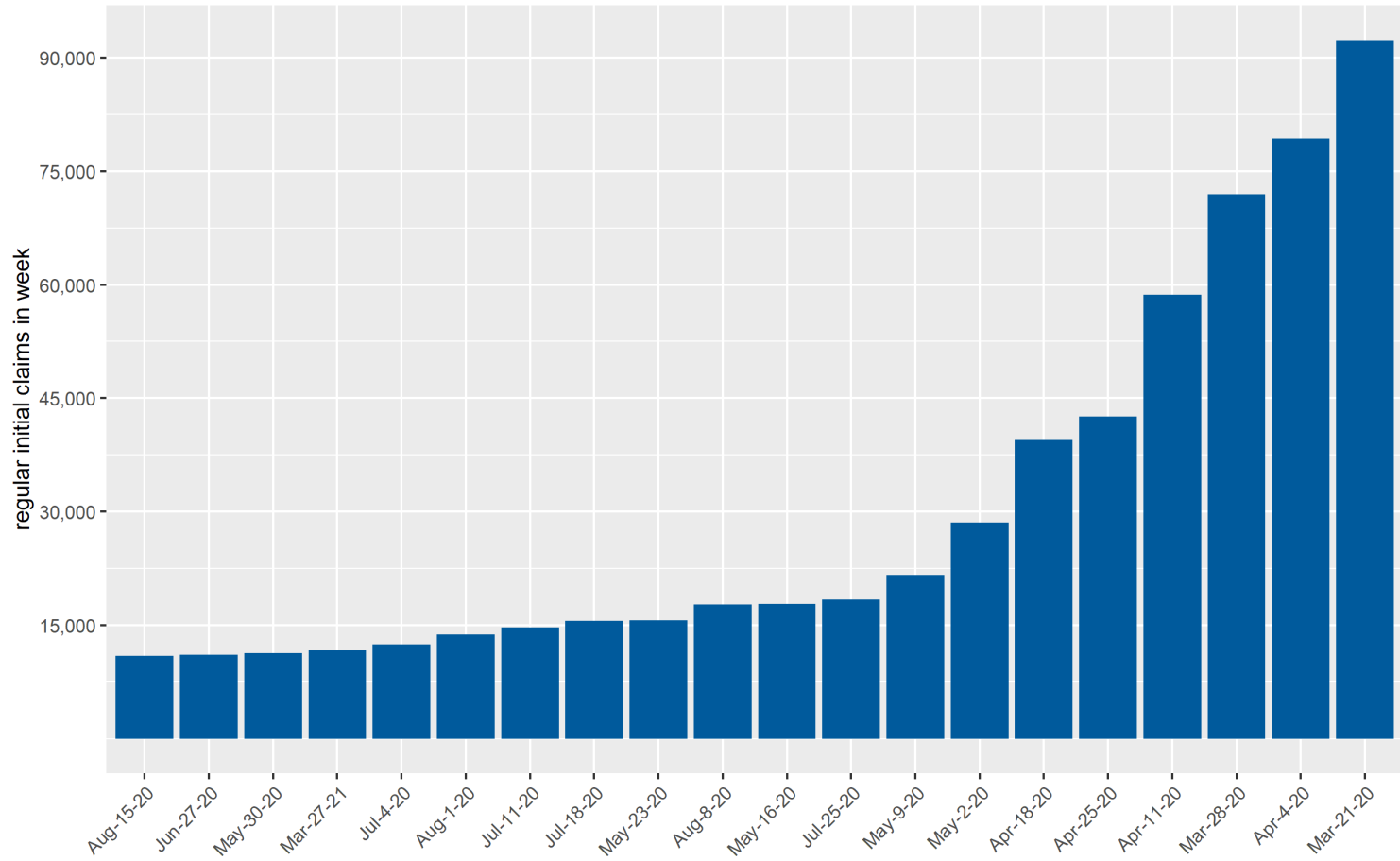
State of Nevada Weekly Initial Claims for Unemployment Insurance by program



Source: ETA 539

State of Nevada Initial Claims All-Time Weekly Highs

State of Nevada Weekly Initial Claims
highest 20 weeks in state history



Source: ETA 539

UI Continued Claims by Week

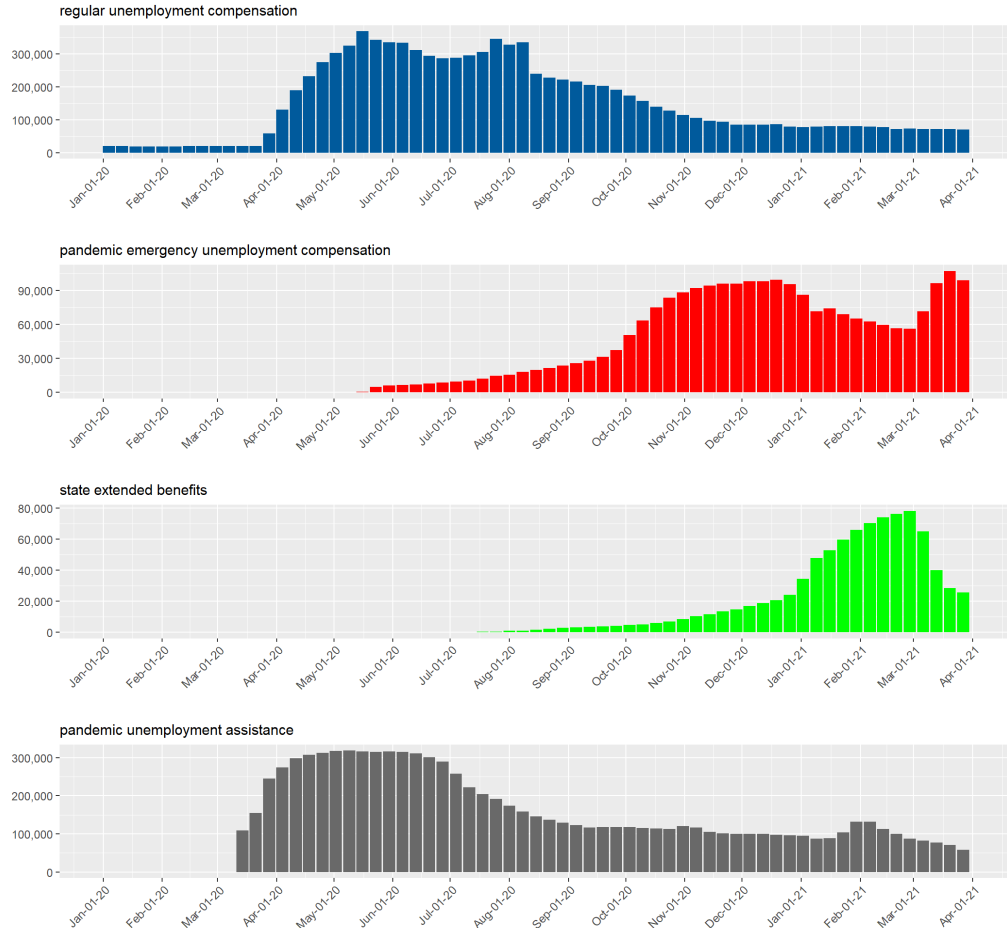
Regular continued claims totaled 70,509 in the week, down 1,216 claims, or 1.7%, compared to the previous week.

Pandemic Unemployment Assistance continued claims totaled 58,548 in the week, down 12,382 claims, or 17.5%, compared to the previous week. PUA continued claims are backdated to show the weeks PUA was claimed.

Pandemic Emergency Unemployment Compensation claims totaled 98,706 in the week, down 8,350 claims, or 7.8%, compared to the previous week.

State Extended Benefit claims totaled 25,549 in the week, down 2,747 claims, or 9.7%, compared to the previous week.

State of Nevada Weekly Continued Claims for Unemployment Insurance by program

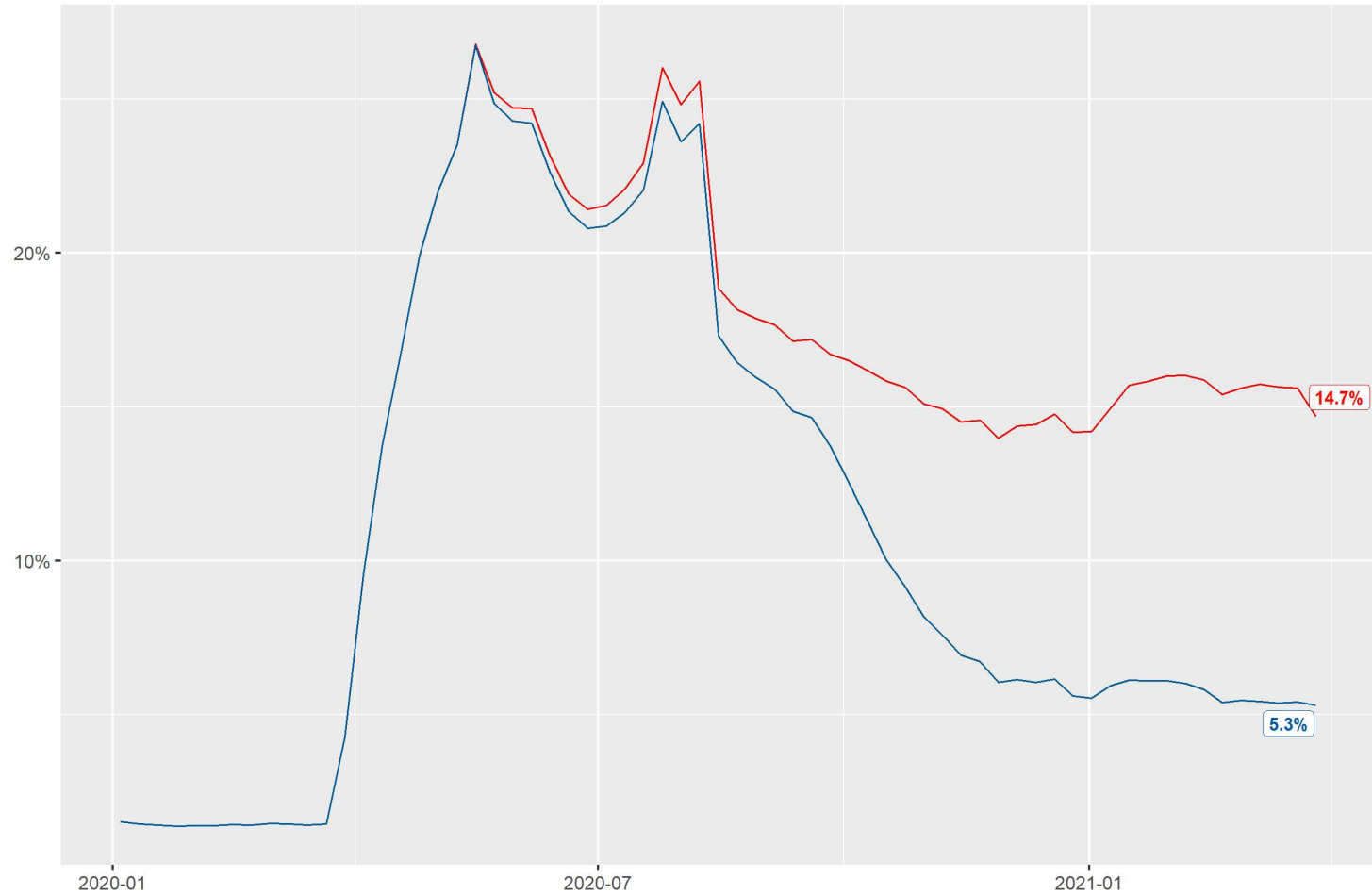


Source: ETA 539

Insured Unemployment Rate

State of Nevada Insured Unemployment Rate

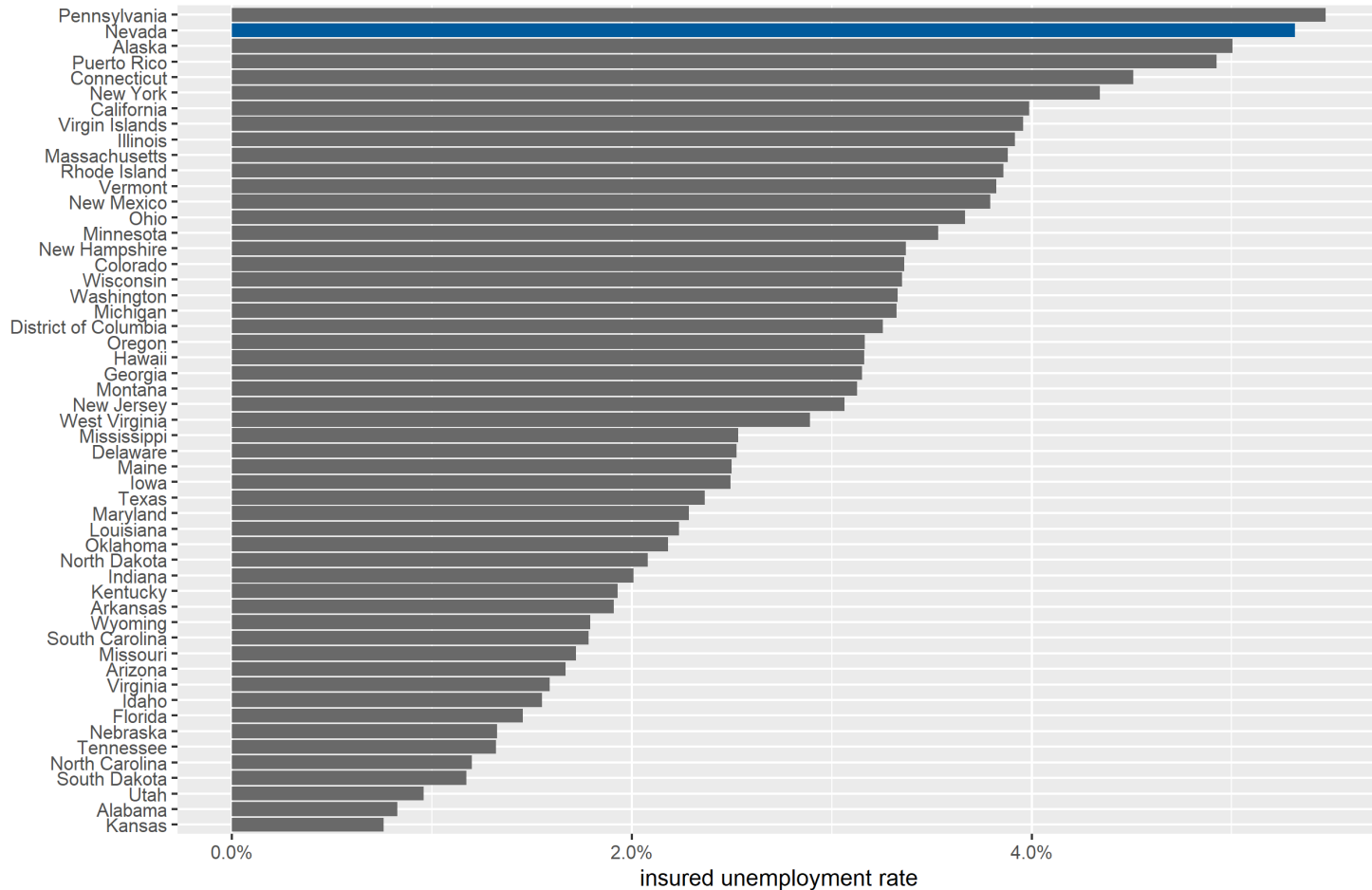
weekly rate for **regular** and **extension** programs



Insured Unemployment Rate by State

Insured Unemployment Rate by State

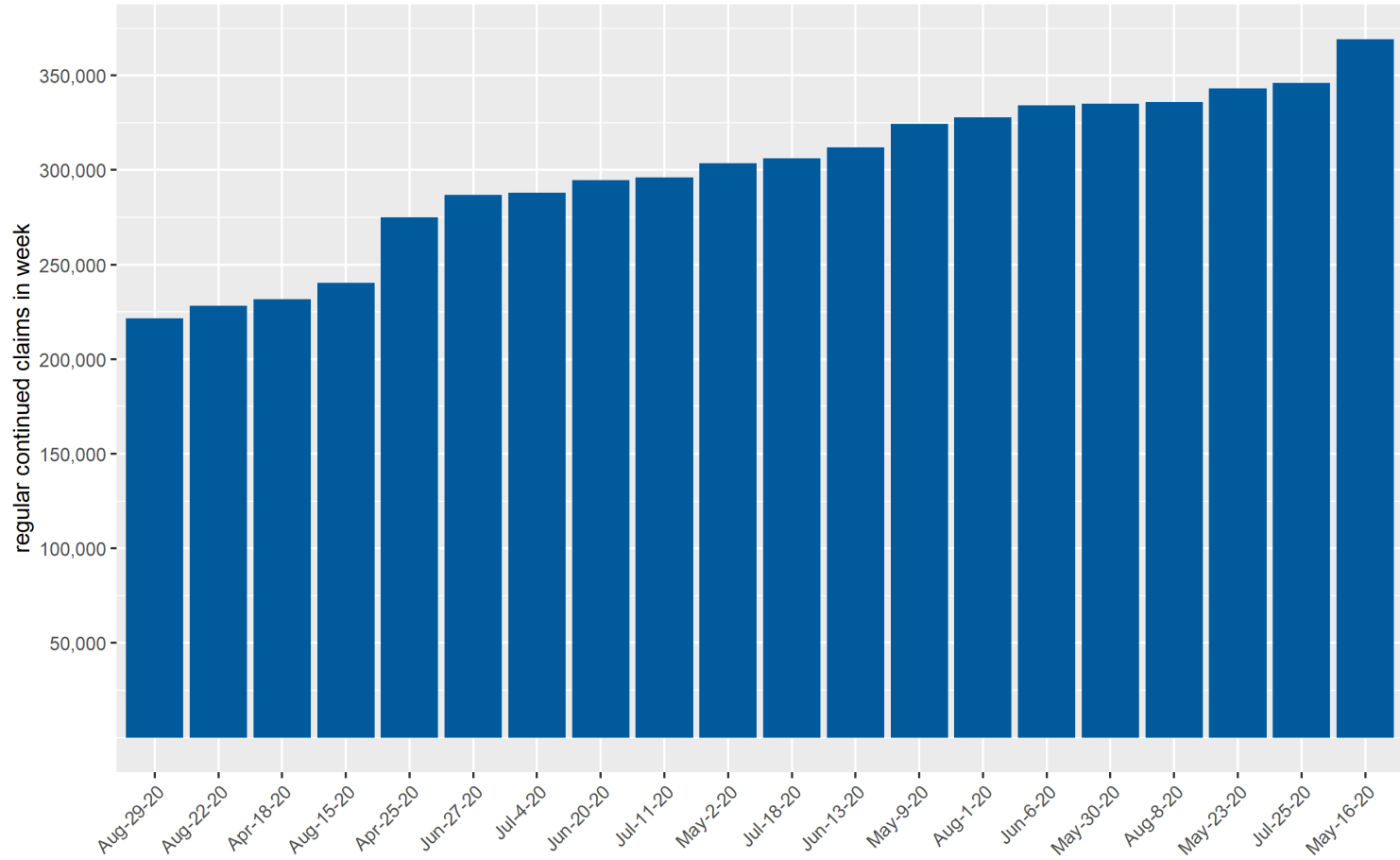
weekly rate by state for most recent available week



Source: ETA 539

State of Nevada Continued Claims All-Time Weekly Highs

State of Nevada Weekly Continued Claims
highest 20 weeks in state history



Source: ETA 539

UI Trust Fund Status

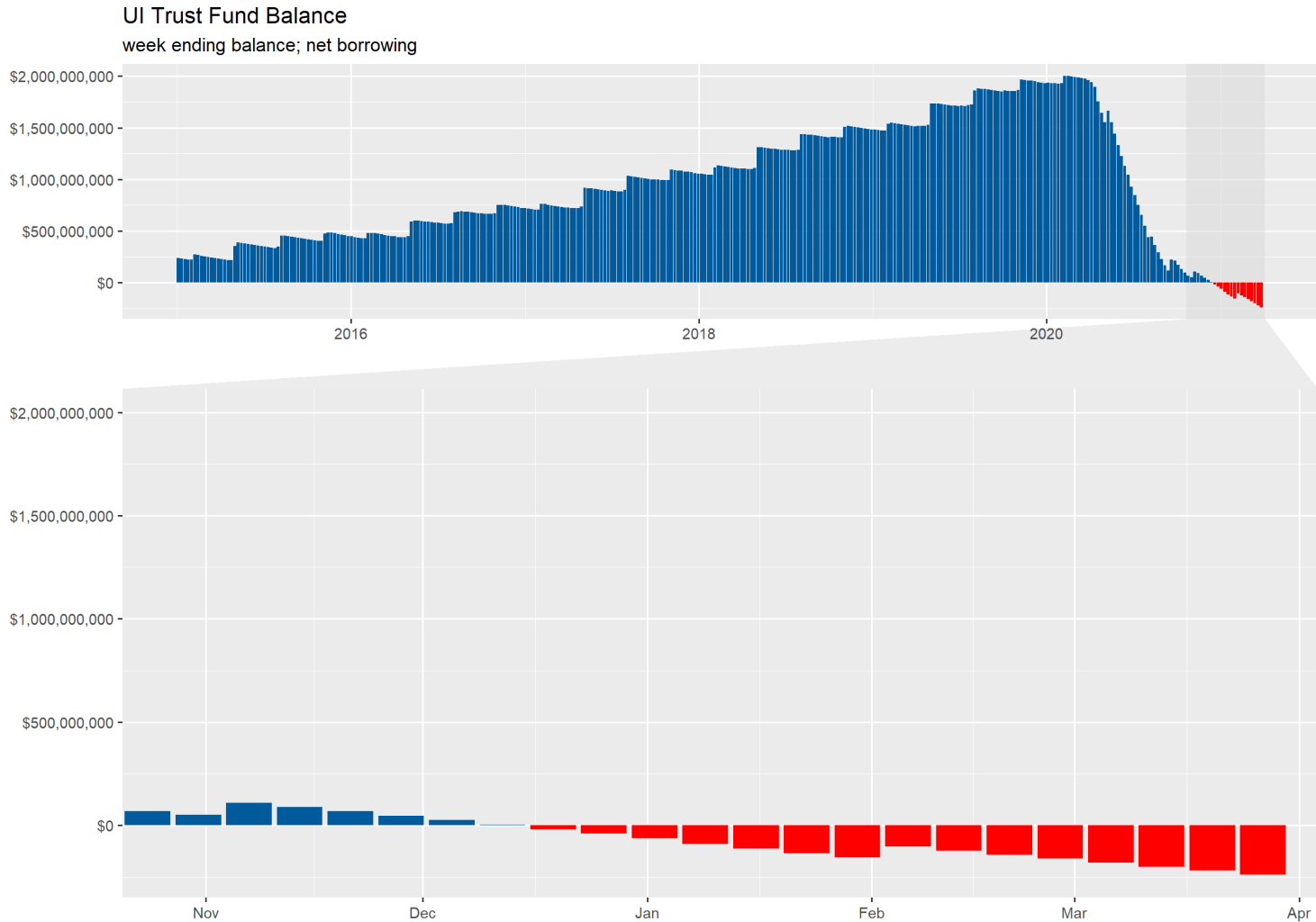
UI Trust Fund Balance & Payment Activity

Reported totals and amounts for week ending 3/27/2021

The Trust Fund Balance is the end of week balance from DETR Financial Management reports less Federal Unemployment Account loans. Due to lags in reporting of transactions and adjustments, week-to-week totals may change.

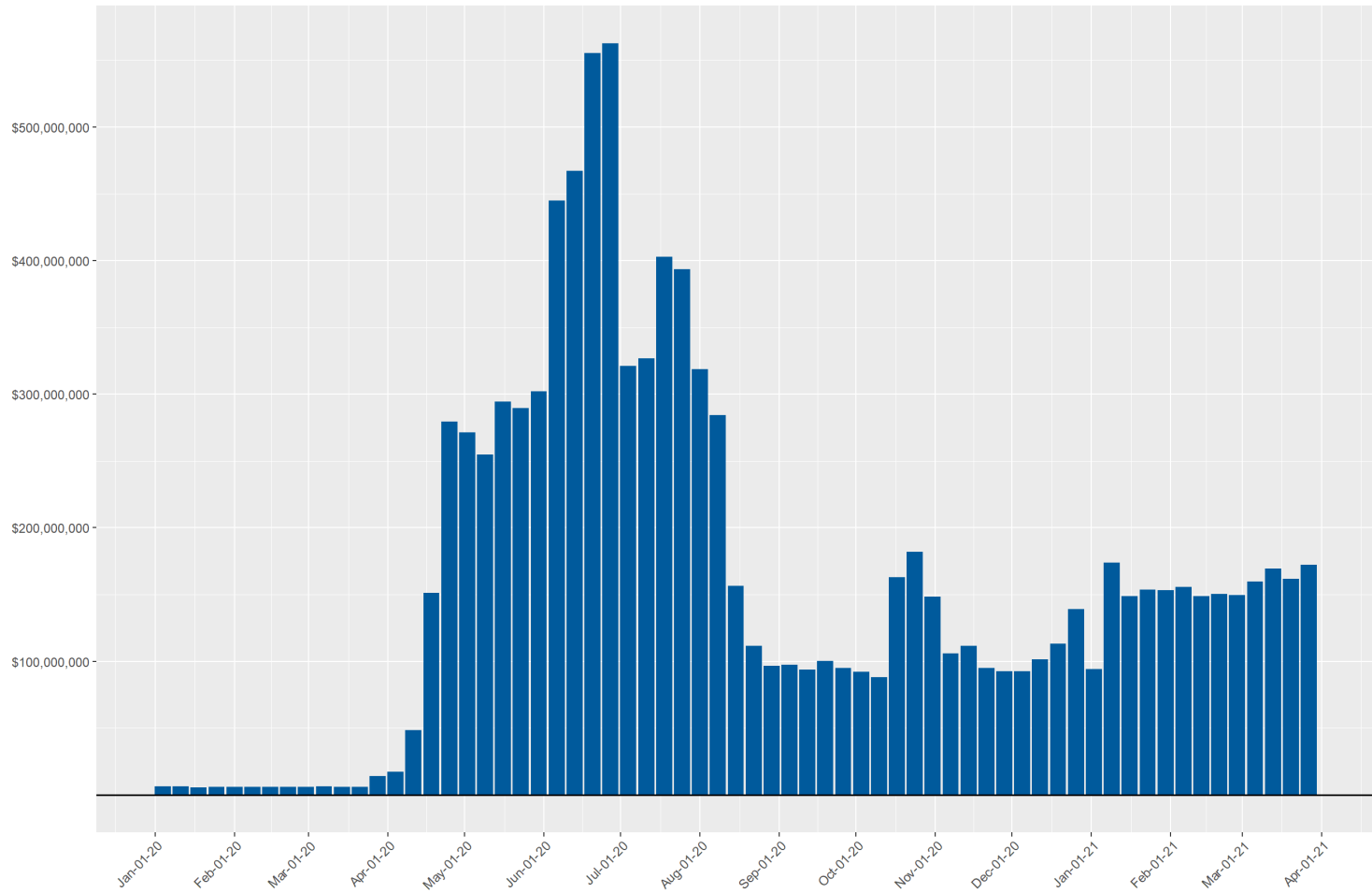
Measure	Current Week	Previous Week	Change from Previous Week	Since 3/14/2020
Trust Fund Balance (Net Borrowing)	-\$238,564,920	-\$219,178,513	-\$19,386,407	-
FUA Borrowing	\$19,094,039	\$18,609,448	\$484,591	\$238,677,453
Regular UI Payments	\$34,562,918	\$31,802,713	\$2,760,205	\$3,230,742,080
Regular-FPUC Payments	\$61,903,890	\$55,402,110	\$6,501,780	\$3,558,681,674
PEUC Payments	\$41,400,842	\$32,178,101	\$9,222,740	\$714,721,313
PUA Payments	\$12,626,158	\$13,675,052	-\$1,048,893	\$975,648,442
PUA-FPUC Payments	\$15,068,620	\$16,063,767	-\$995,148	\$1,155,422,742
SEB Payments	\$6,667,611	\$12,301,377	-\$5,633,766	\$253,922,372
LWA Payments	\$0	\$0	\$0	\$296,660,070
LWA-PUA Payments	\$198,240	\$191,100	\$7,140	\$93,730,770
All Programs	\$172,428,278	\$161,614,220	\$10,814,058	\$10,279,529,464

Trust Fund Balance



Weekly Payments

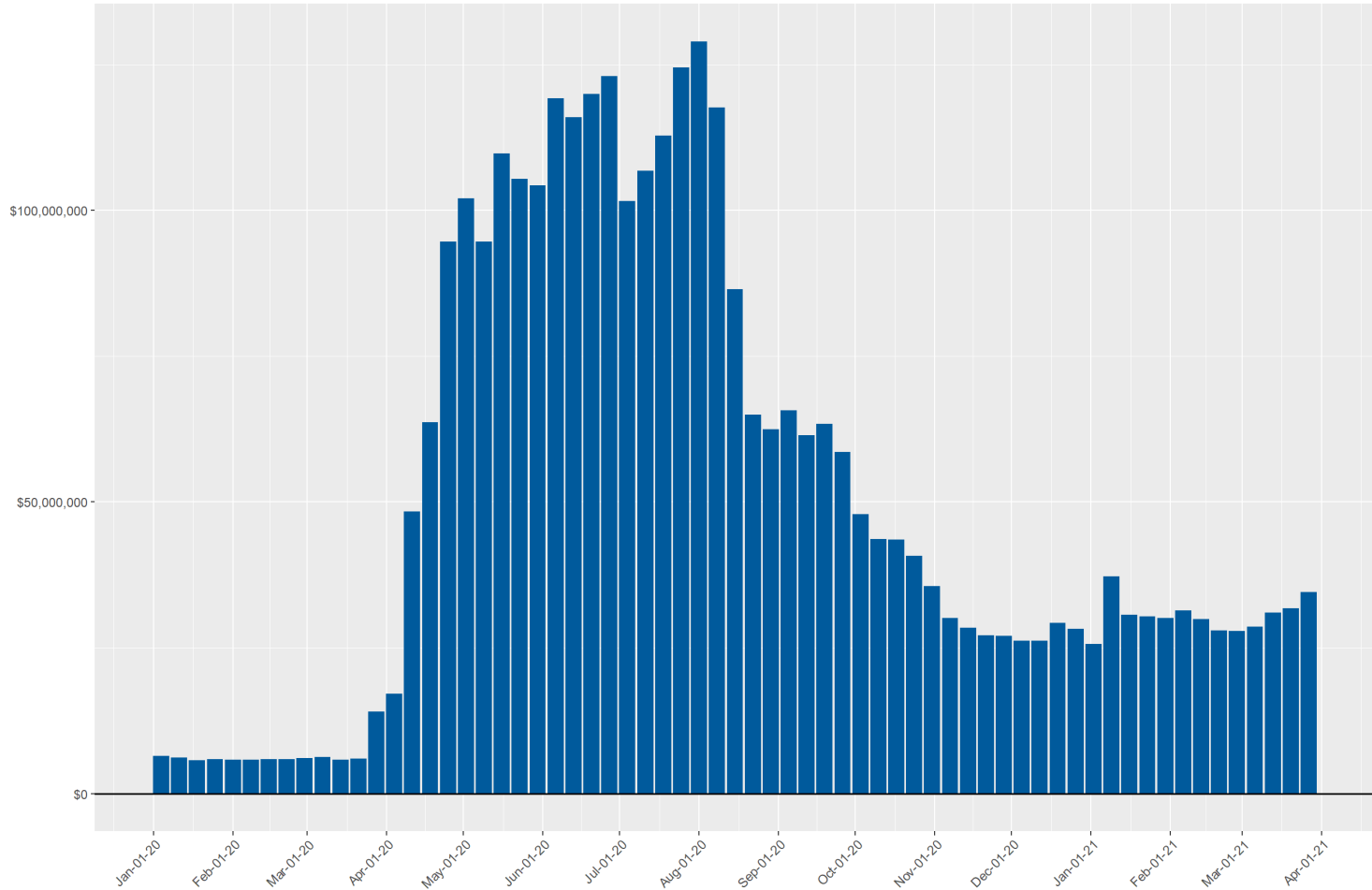
Unemployment Insurance Weekly Payments
compensation total for all programs



Source: DETR Internal Reporting

Weekly Payments by Program (Regular UI)

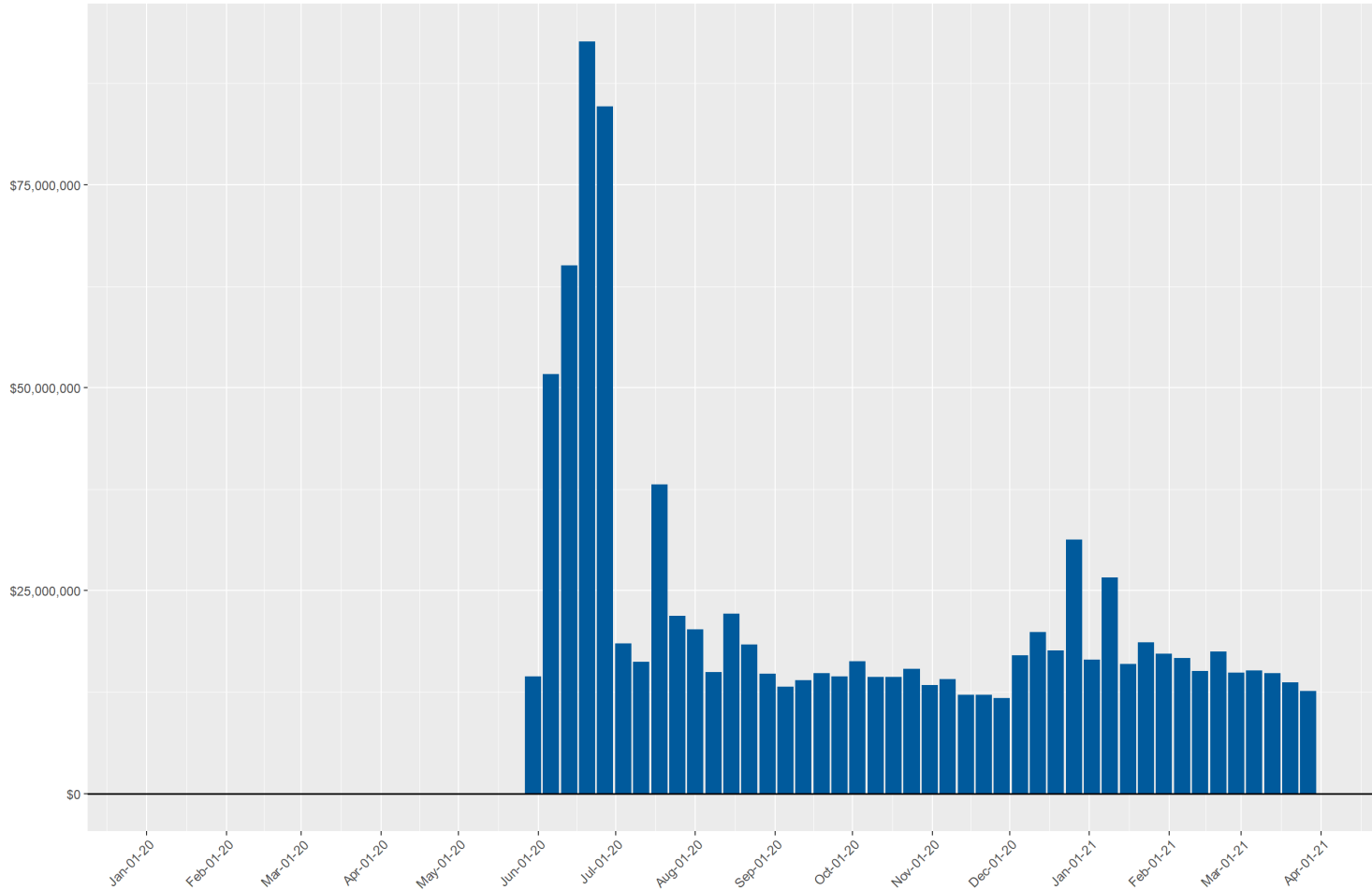
Unemployment Insurance Weekly Payments
regular unemployment insurance compensation



Source: DETR Internal Reporting

Weekly Payments by Program (PUA)

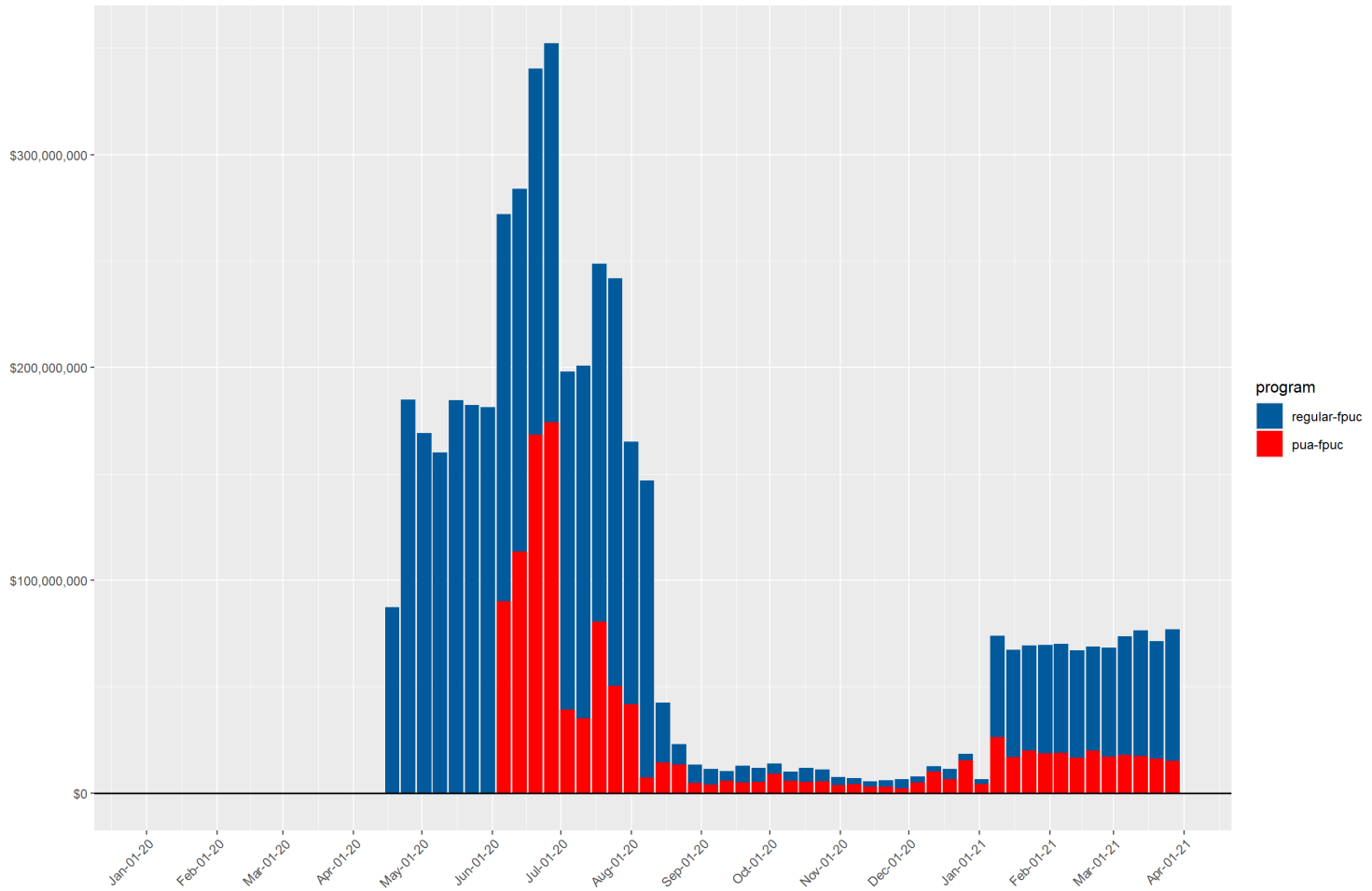
Unemployment Insurance Weekly Payments
pandemic unemployment assistance compensation



Source: DETR Internal Reporting

Weekly Payments by Program (FPUC)

Unemployment Insurance Weekly Payments
federal pandemic unemployment compensation

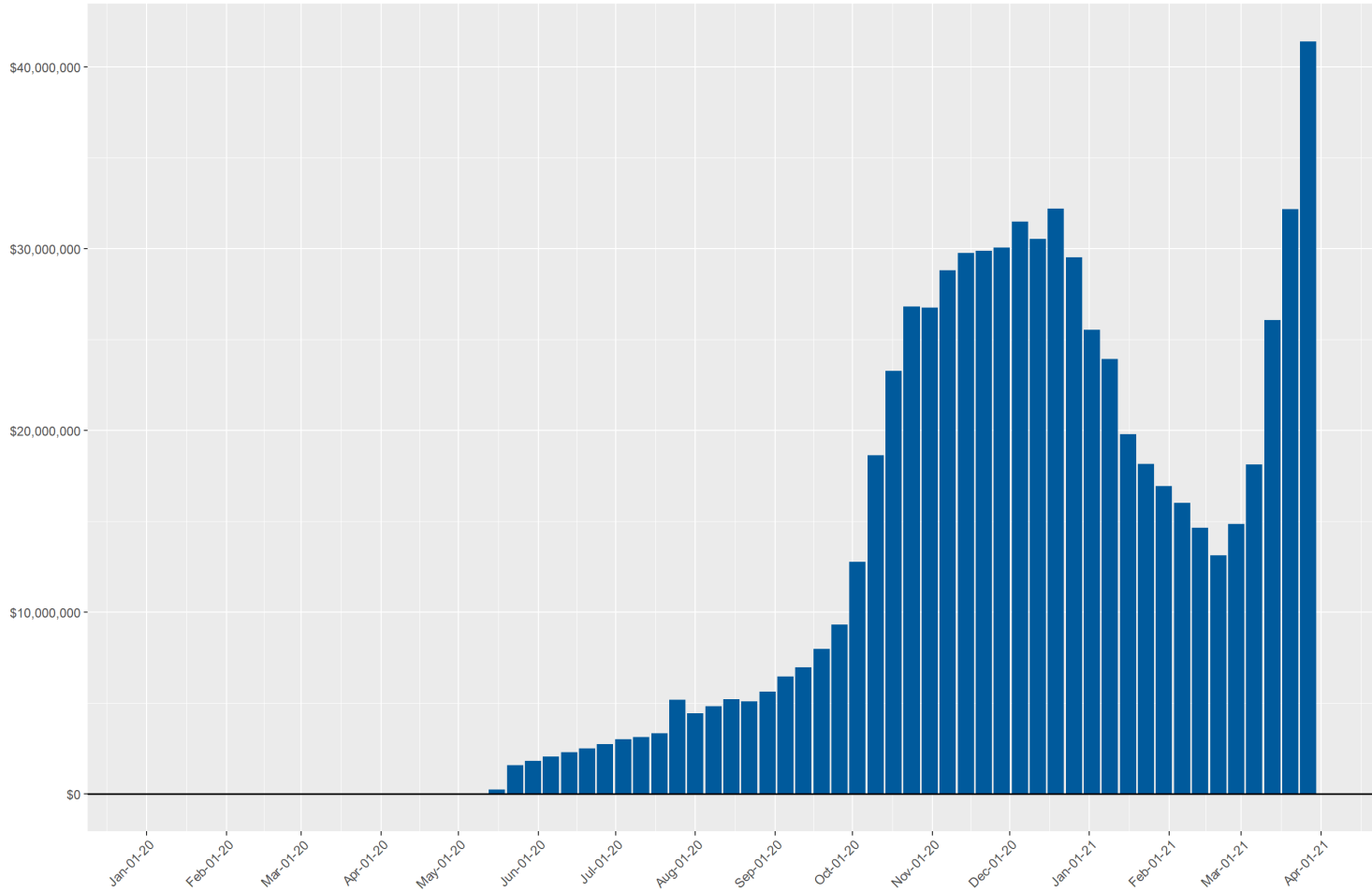


Source: DETR Internal Reporting

Weekly Payments by Program (PEUC)

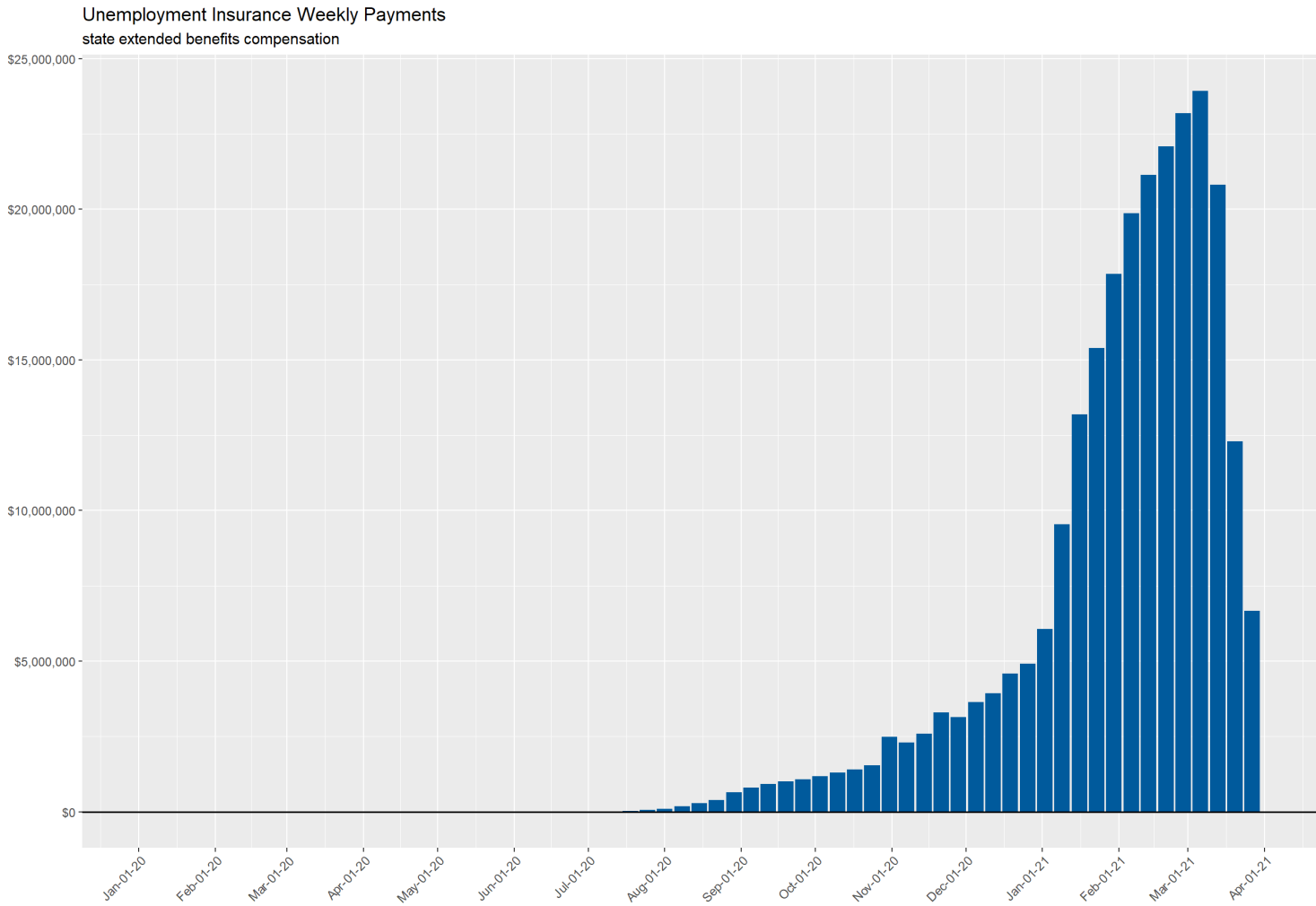
Unemployment Insurance Weekly Payments

federal pandemic emergency unemployment compensation



Source: DETR Internal Reporting

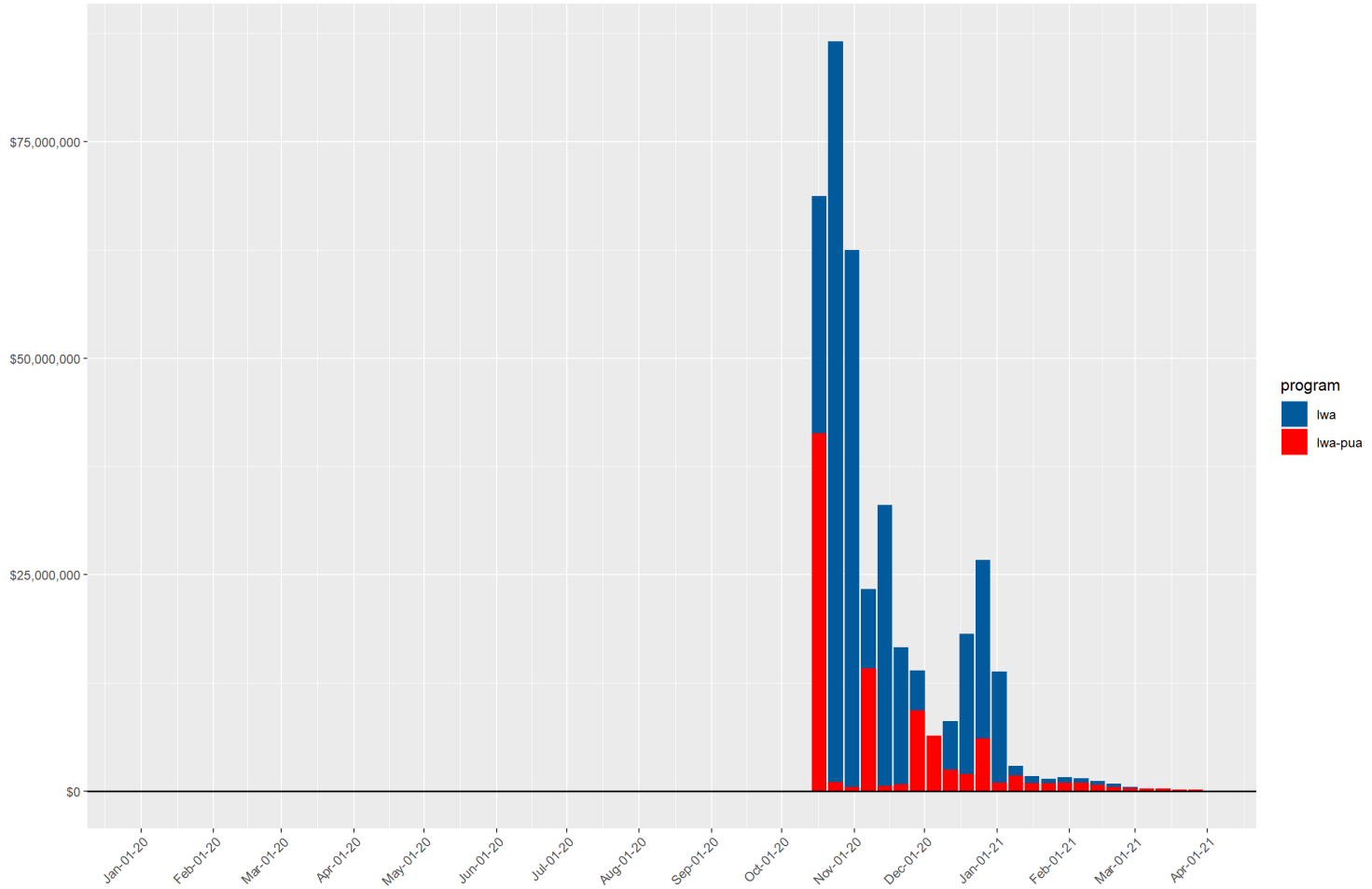
Weekly Payments by Program (SEB)



Source: DETR Internal Reporting

Weekly Payments by Program (LWA)

Unemployment Insurance Weekly Payments
lost wages assistance compensation

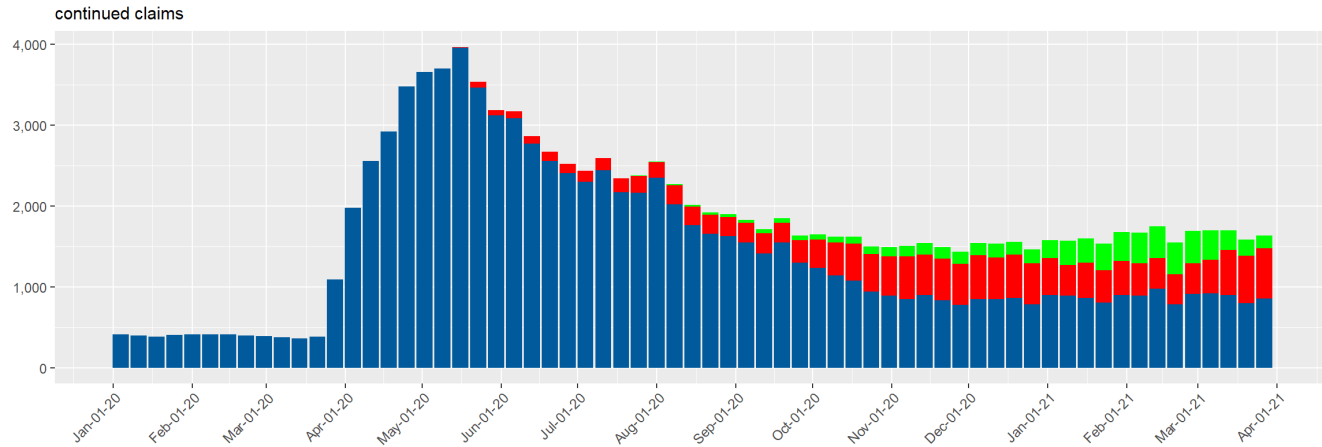
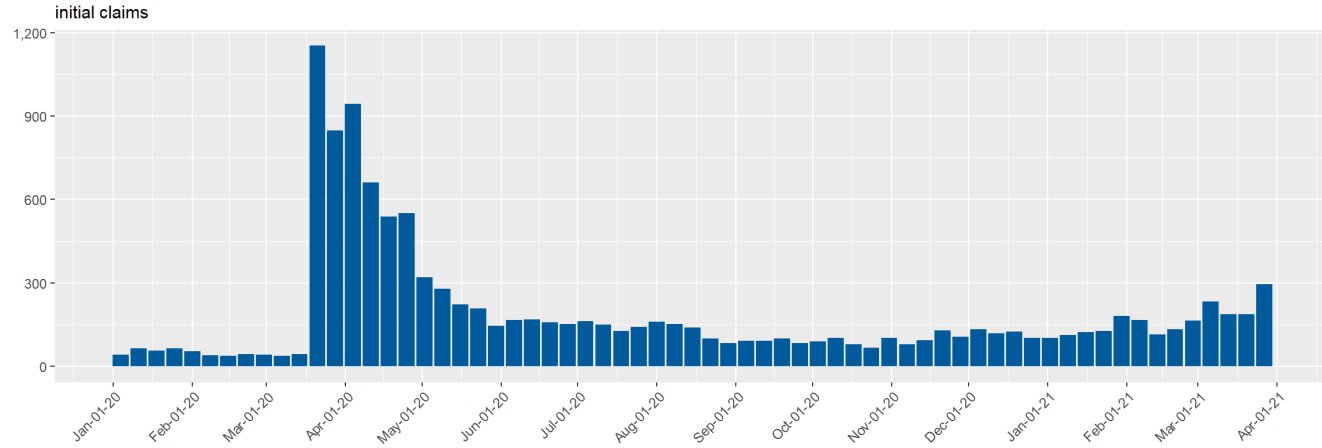


Source: DETR Internal Reporting

Claims by County

UI Claims for Carson City

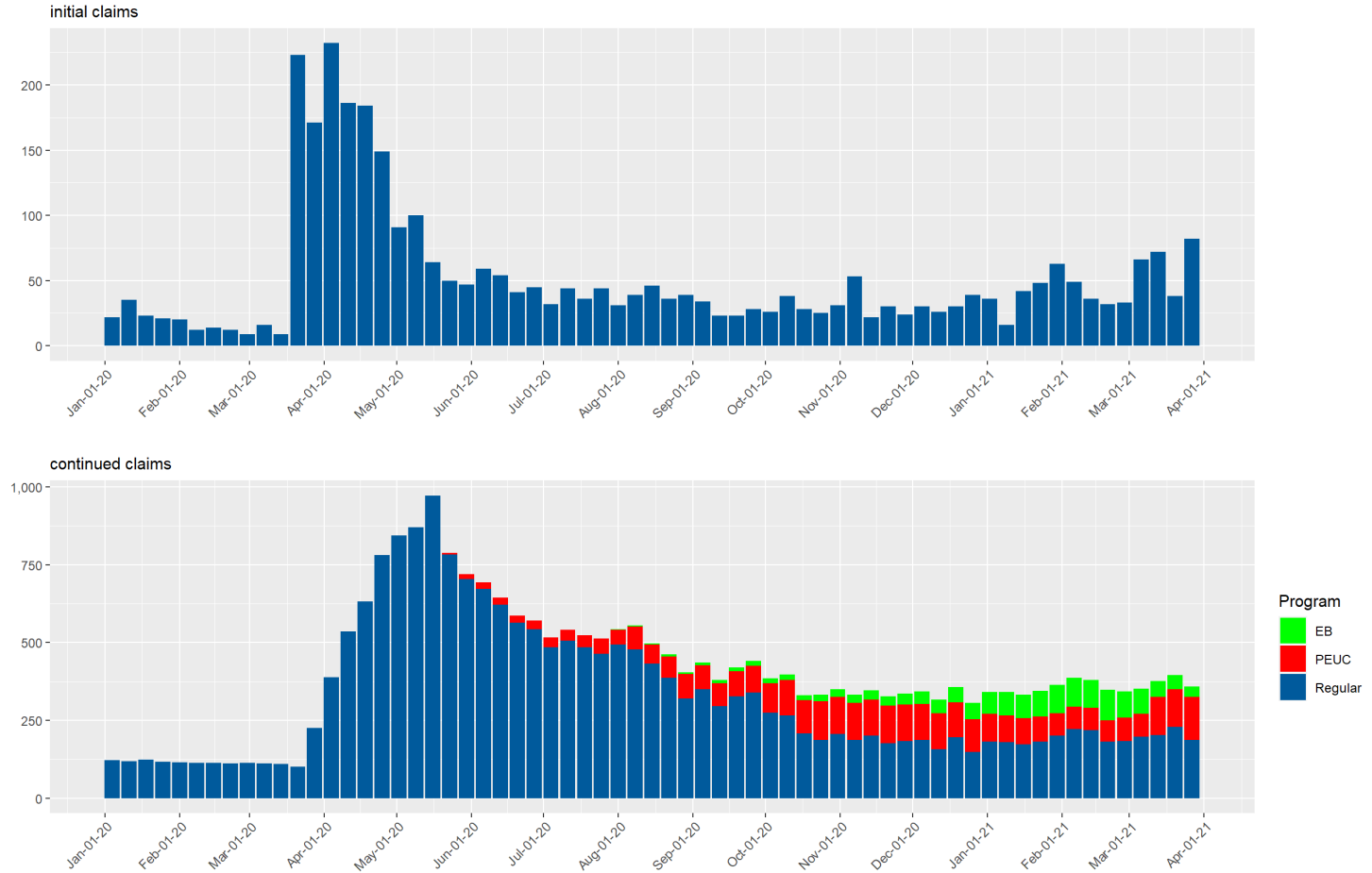
Carson City Unemployment Insurance Claims by Week since January 2020



Source: DETR Internal Reporting

UI Claims for Churchill County

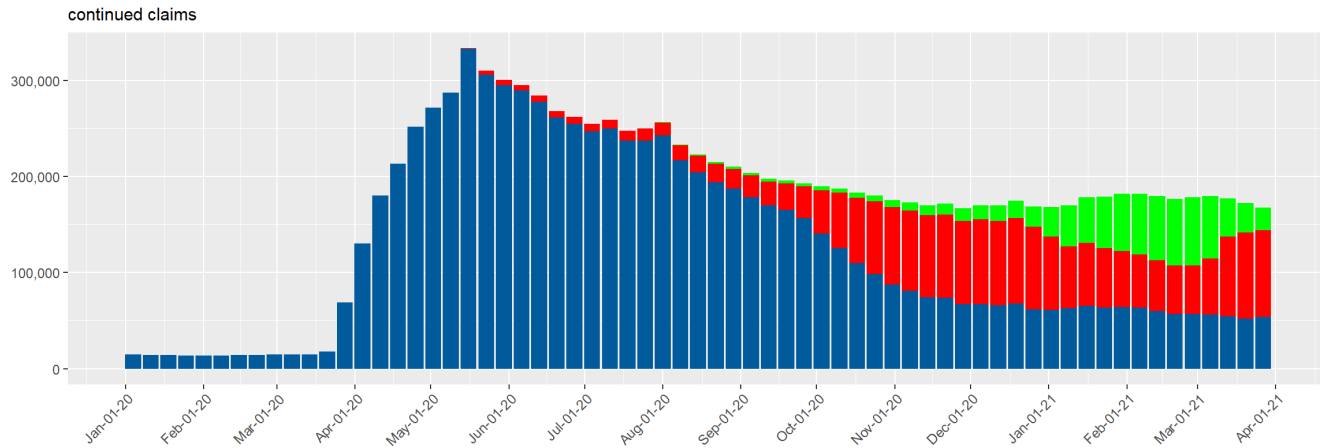
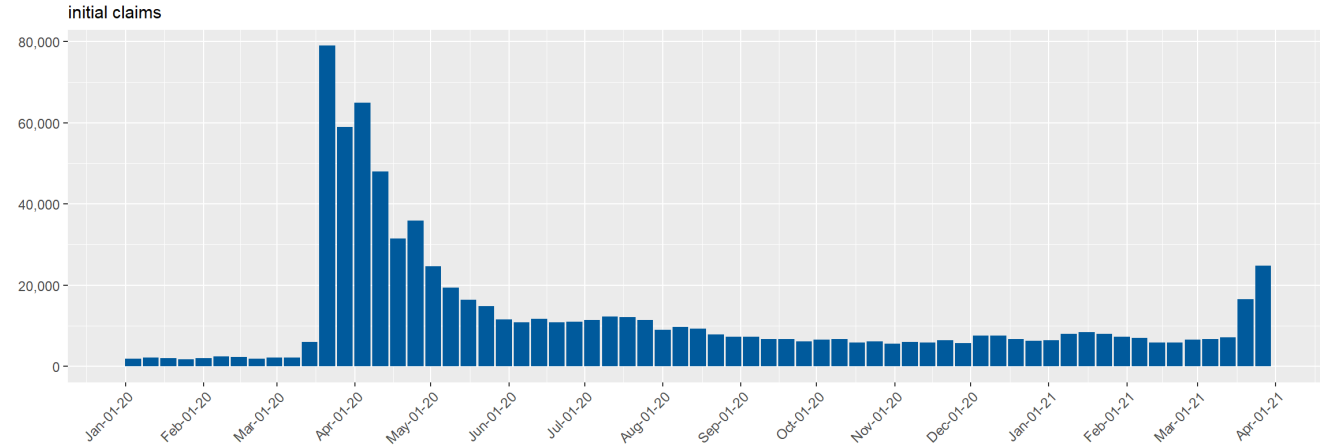
Churchill County Unemployment Insurance Claims by Week since January 2020



Source: DETR Internal Reporting

UI Claims for Clark County

Clark County Unemployment Insurance Claims by Week since January 2020

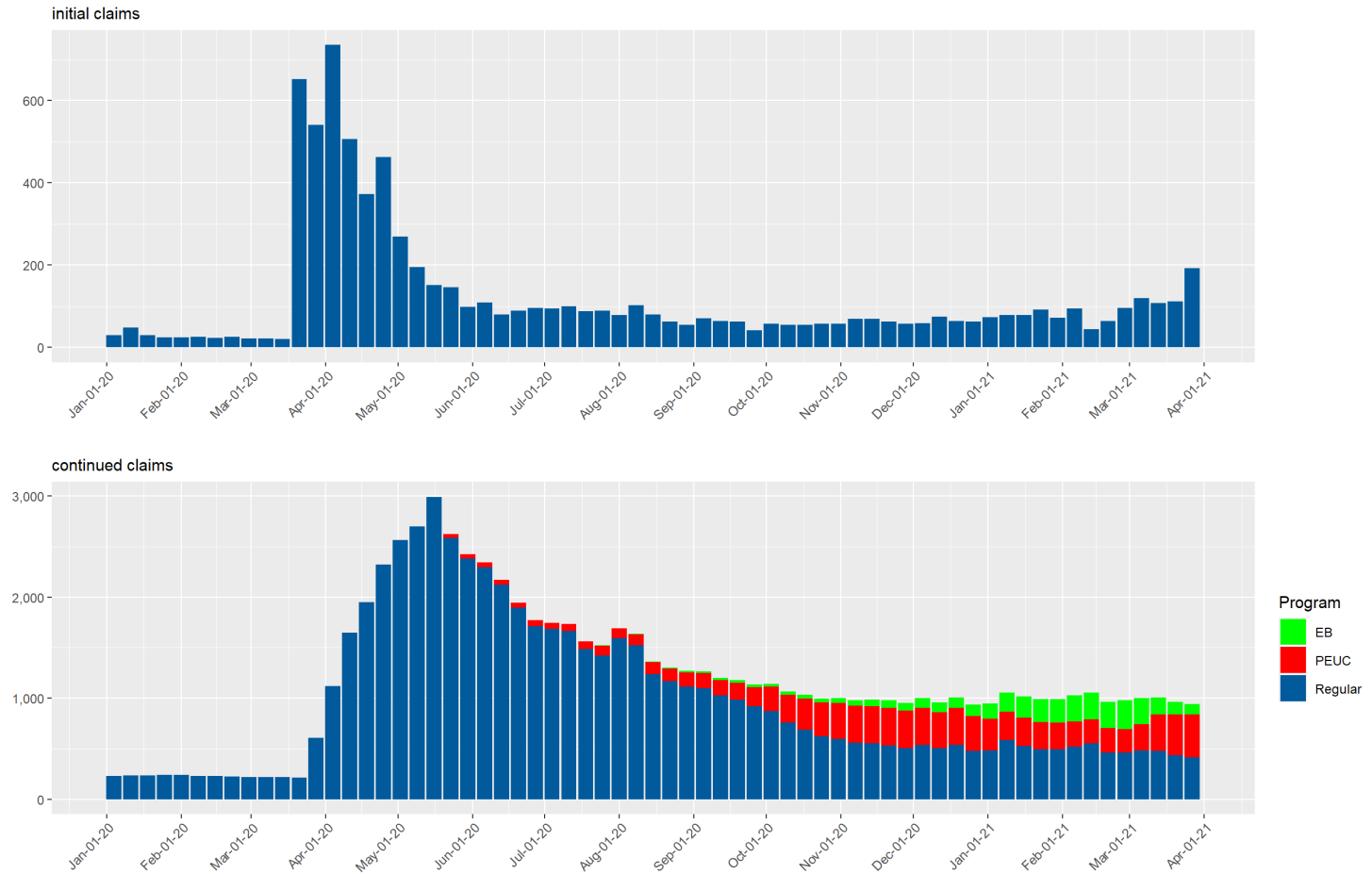


Program
■ EB
■ PEUC
■ Regular

Source: DETR Internal Reporting

UI Claims for Douglas County

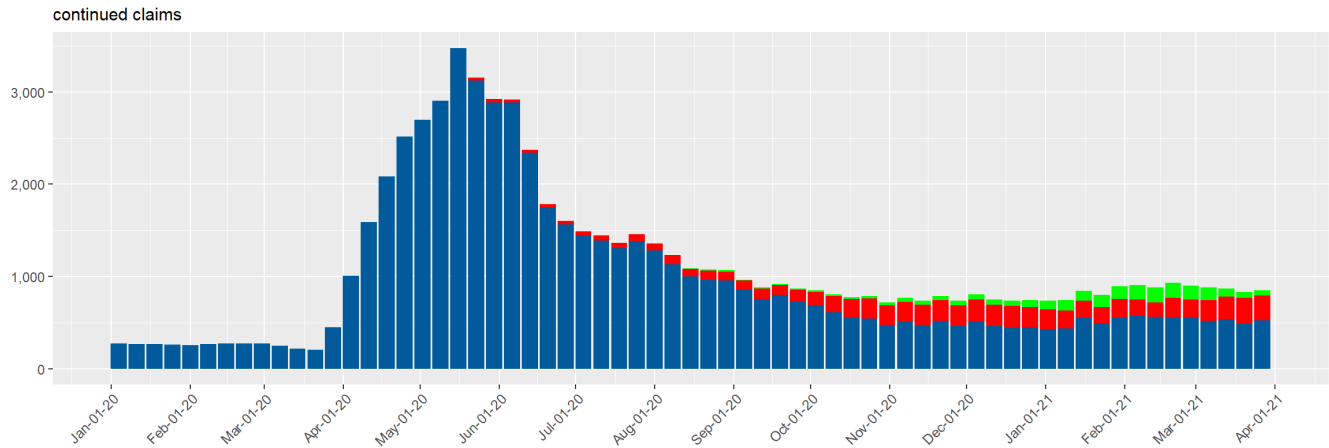
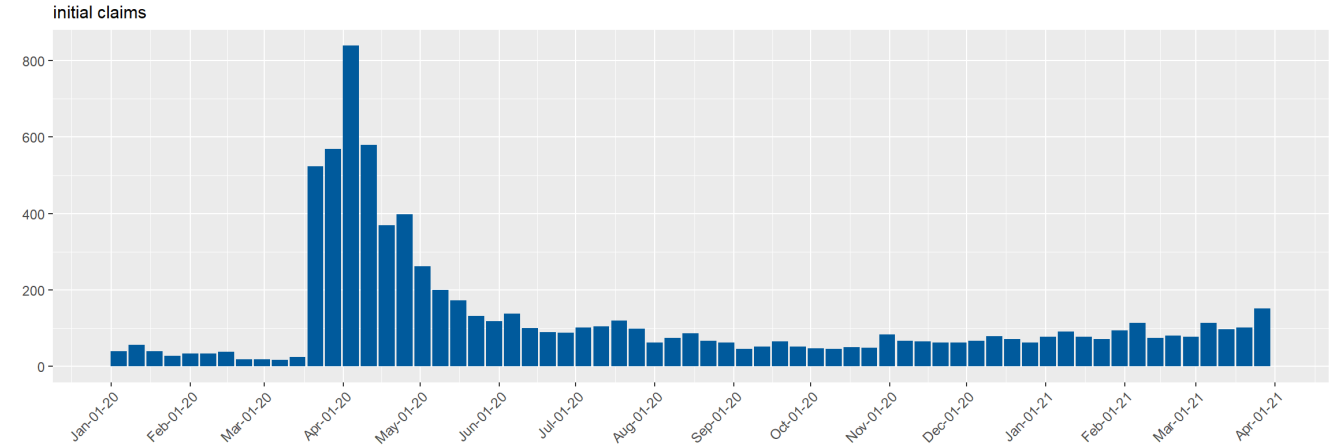
Douglas County Unemployment Insurance Claims by Week since January 2020



Source: DETR Internal Reporting

UI Claims for Elko County

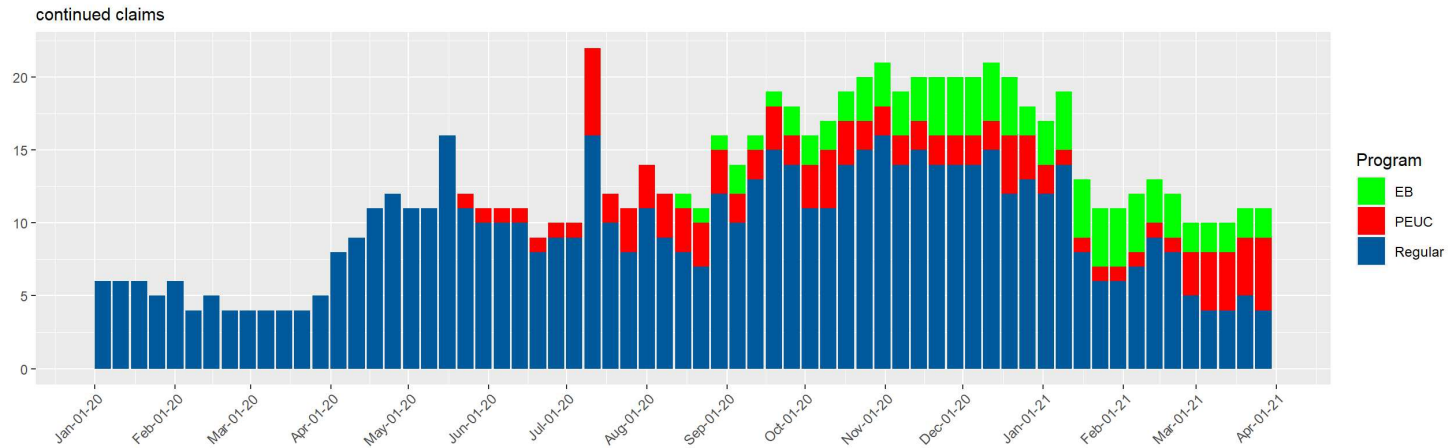
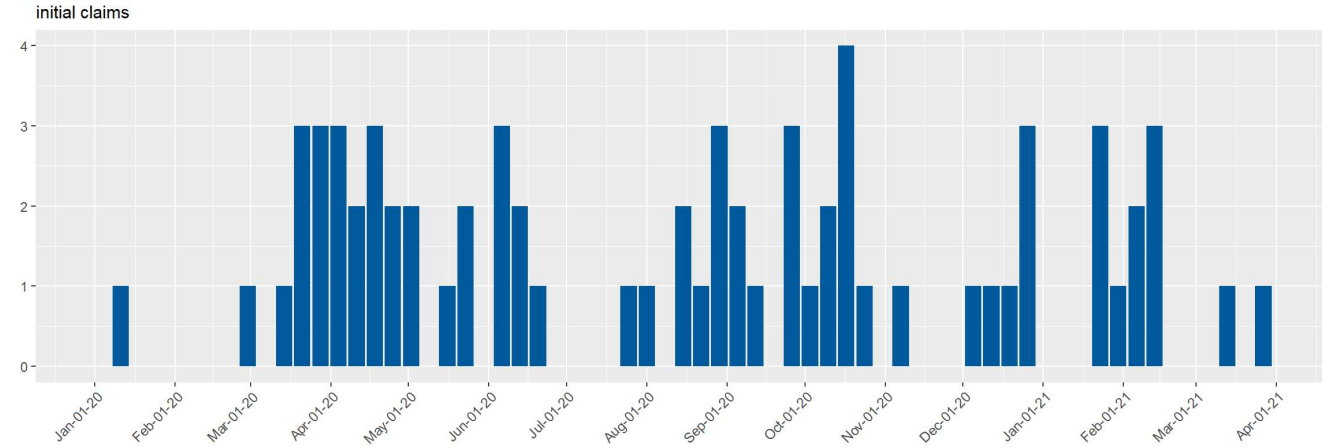
Elko County Unemployment Insurance Claims by Week since January 2020



Source: DETR Internal Reporting

UI Claims for Esmeralda County

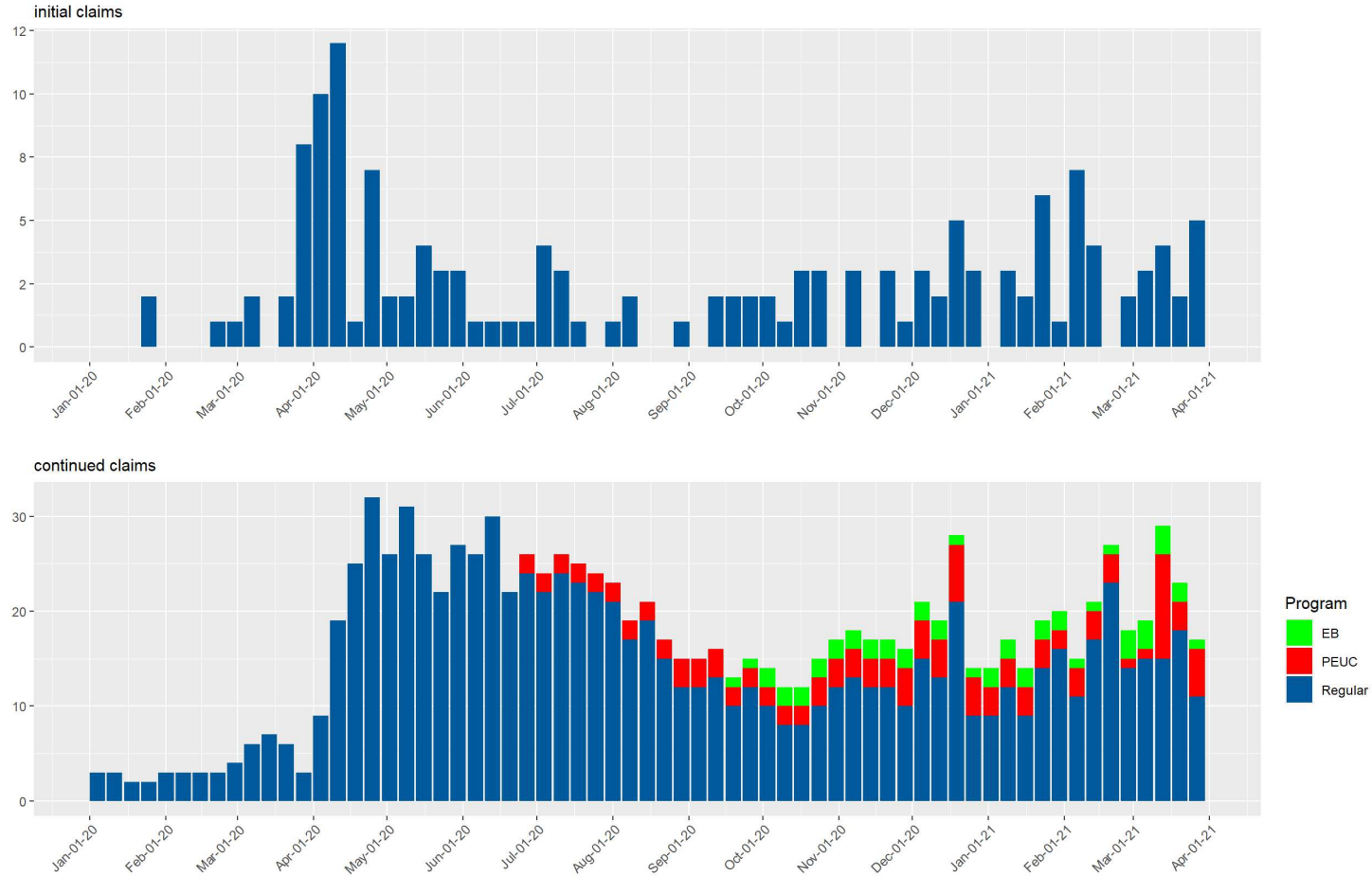
Esmeralda County Unemployment Insurance Claims by Week since January 2020



Source: DETR Internal Reporting

UI Claims for Eureka County

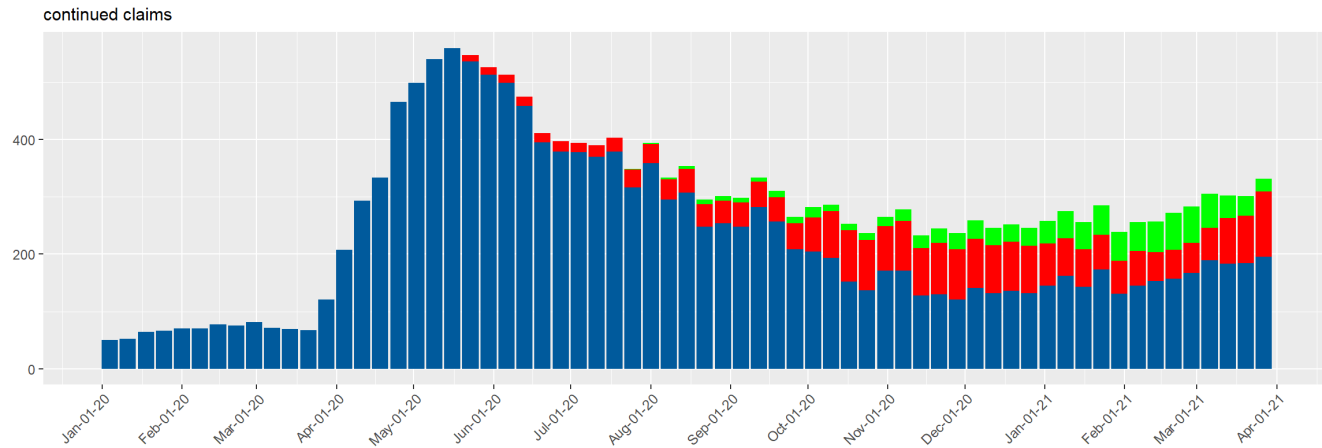
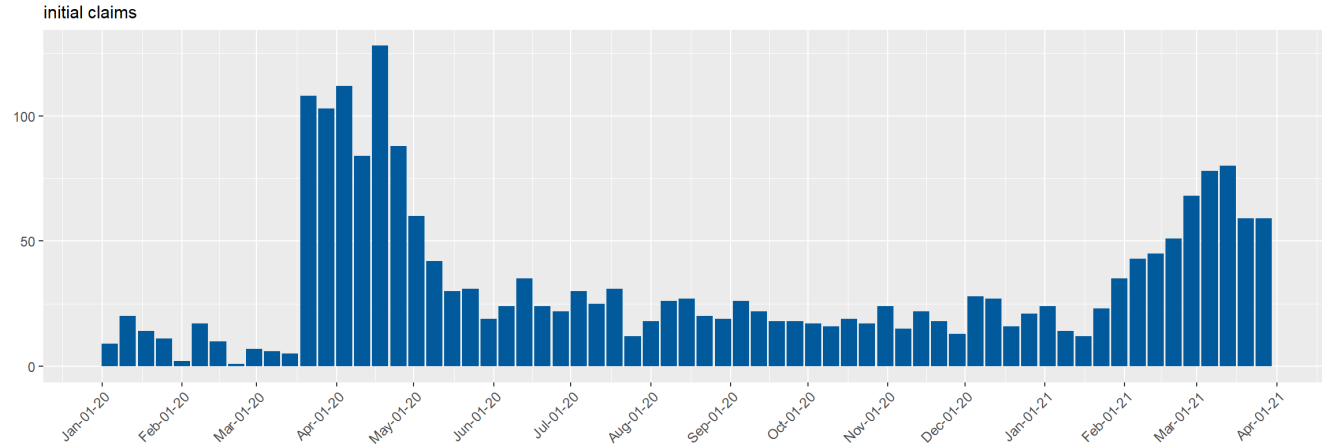
Eureka County Unemployment Insurance Claims by Week since January 2020



Source: DETR Internal Reporting

UI Claims for Humboldt County

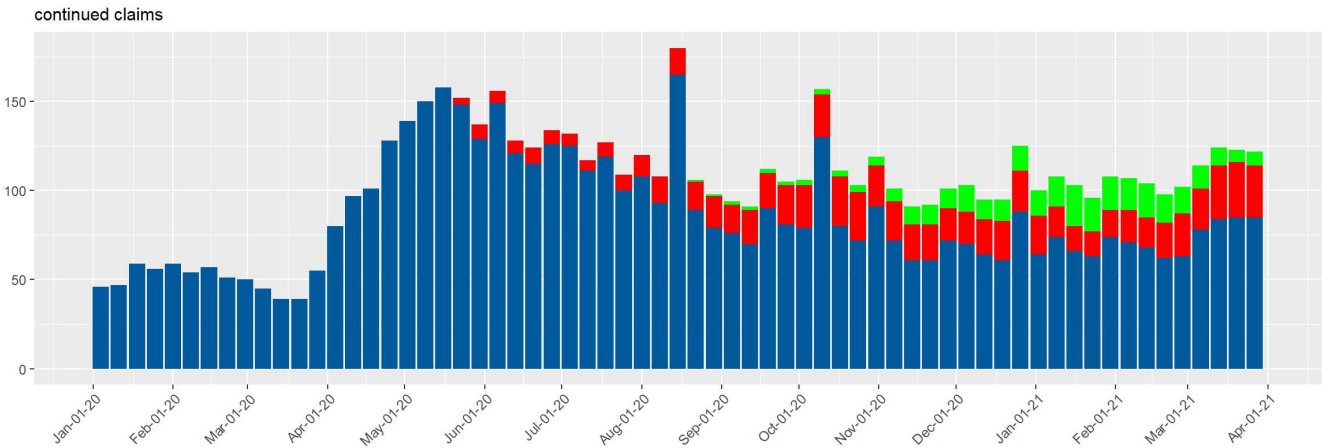
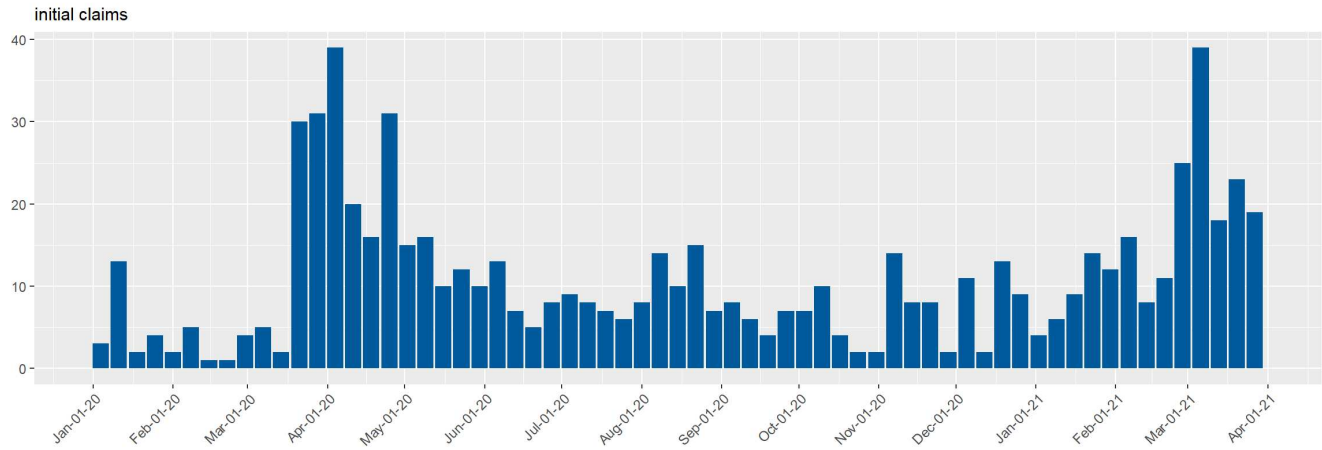
Humboldt County Unemployment Insurance Claims by Week since January 2020



Source: DETR Internal Reporting

UI Claims for Lander County

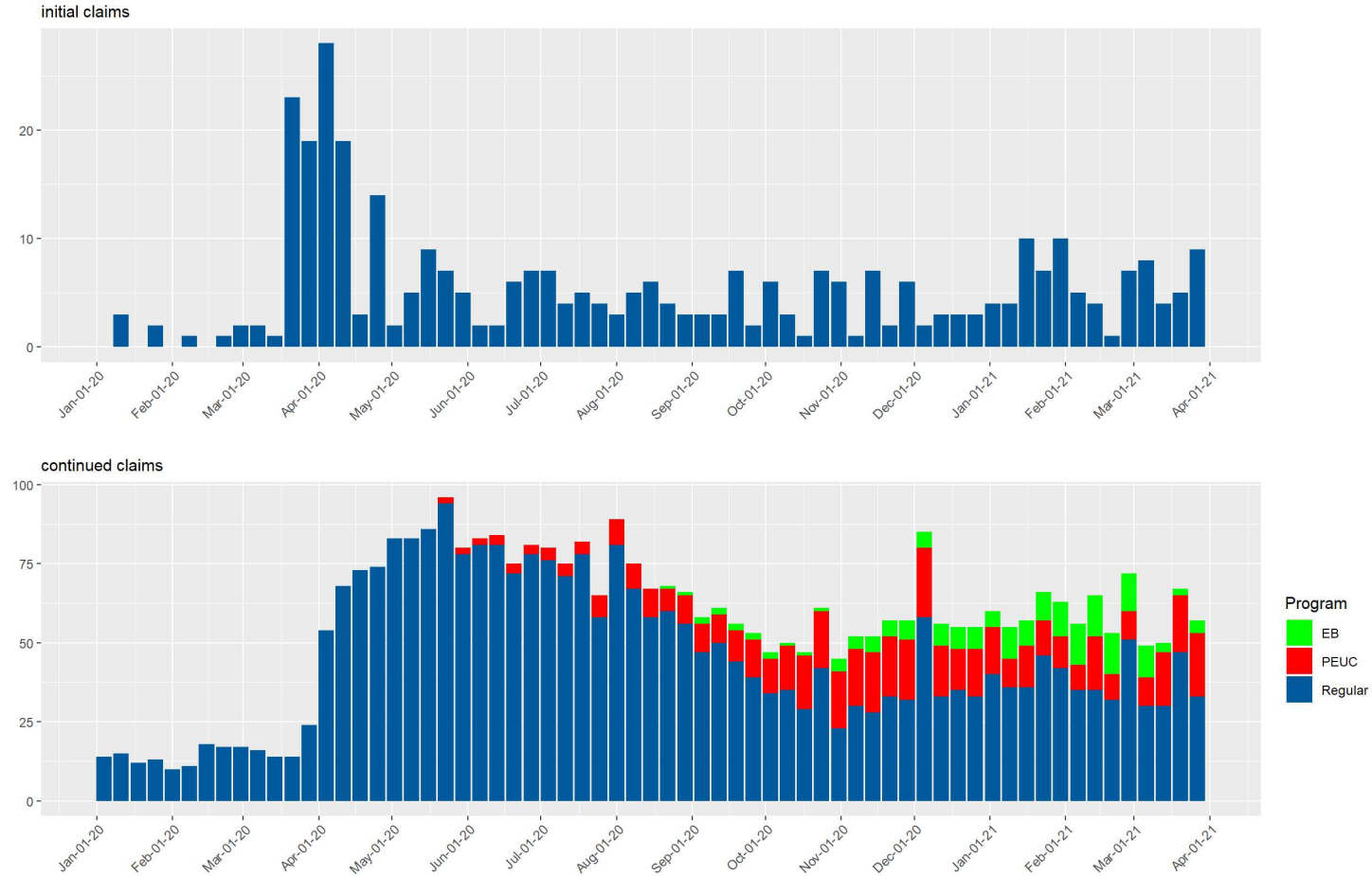
Lander County Unemployment Insurance Claims by Week since January 2020



Source: DETR Internal Reporting

UI Claims for Lincoln County

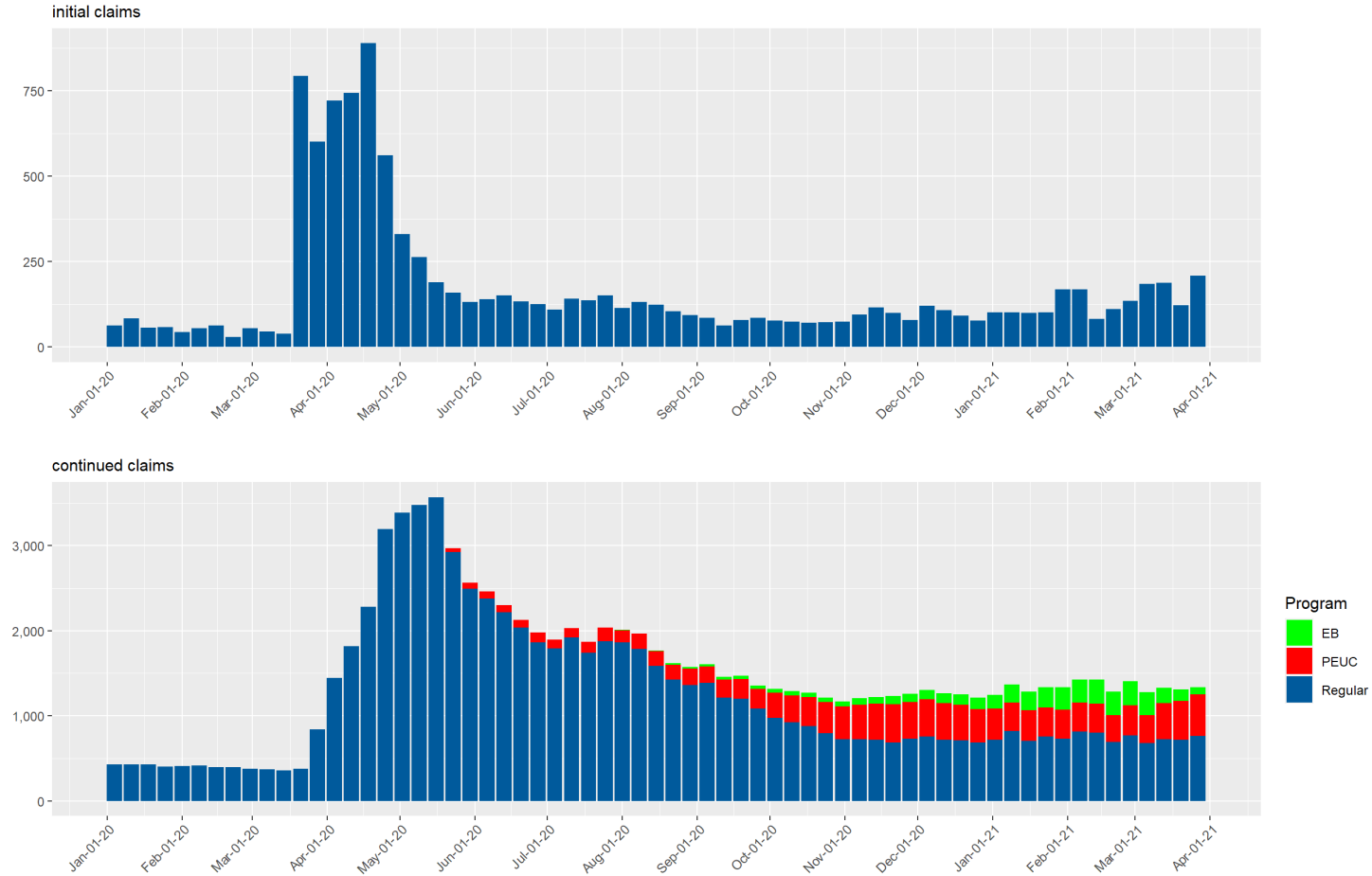
Lincoln County Unemployment Insurance Claims by Week since January 2020



Source: DETR Internal Reporting

UI Claims for Lyon County

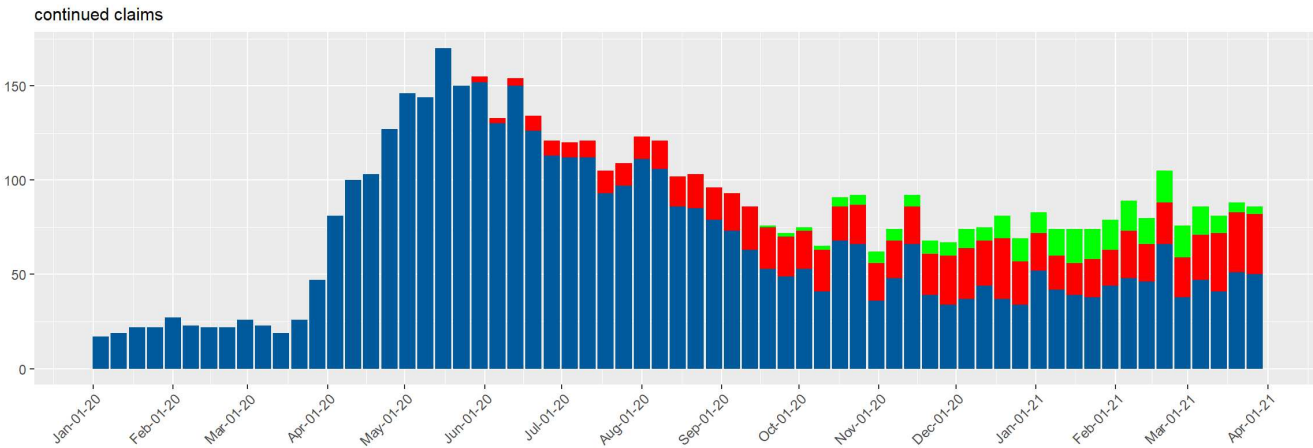
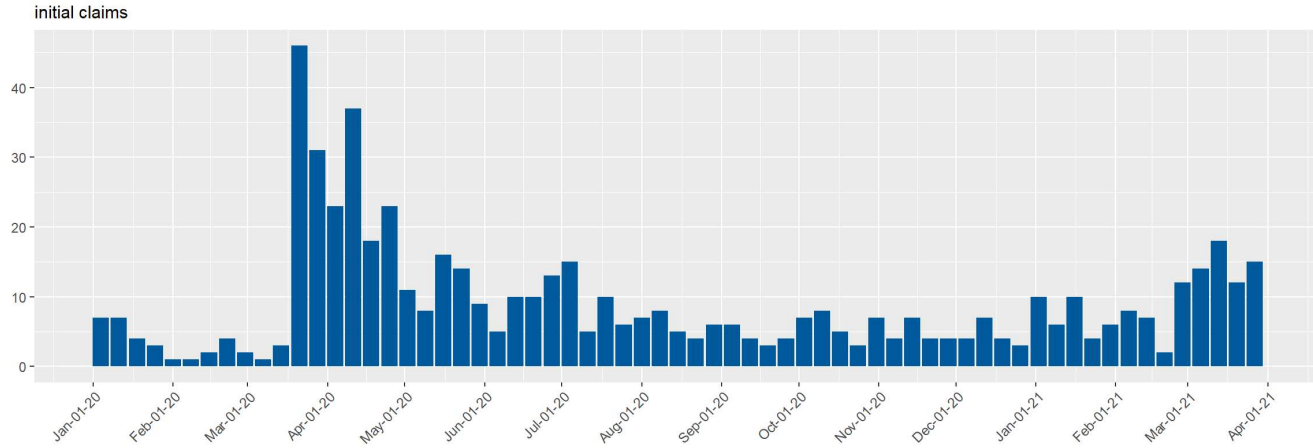
Lyon County Unemployment Insurance Claims by Week since January 2020



Source: DETR Internal Reporting

UI Claims for Mineral County

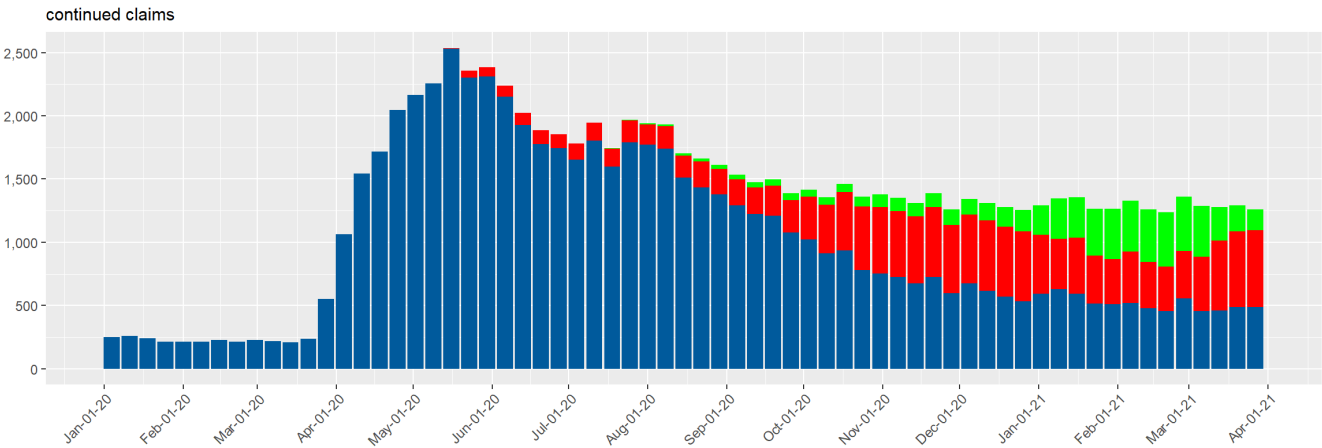
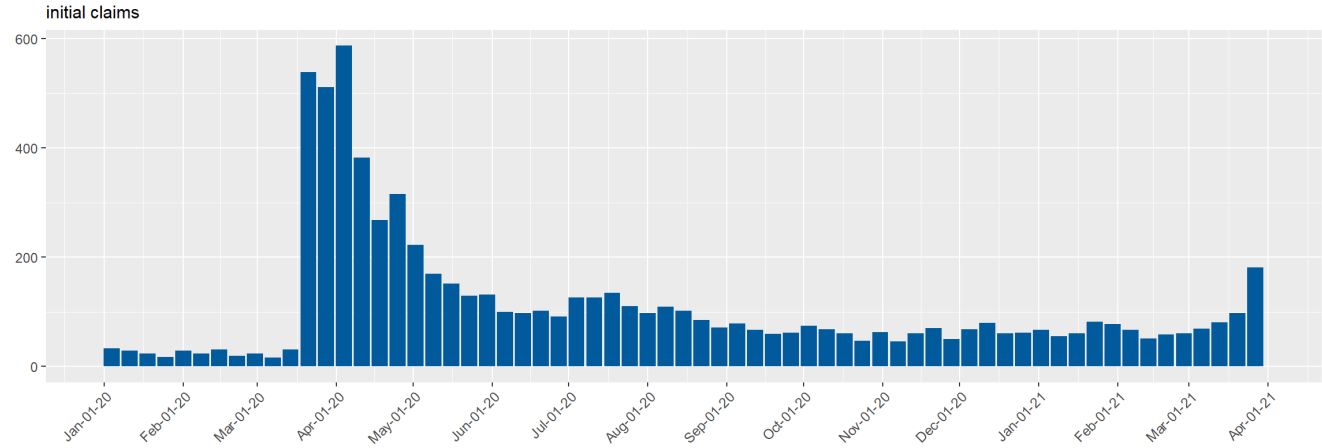
Mineral County Unemployment Insurance Claims by Week since January 2020



Source: DETR Internal Reporting

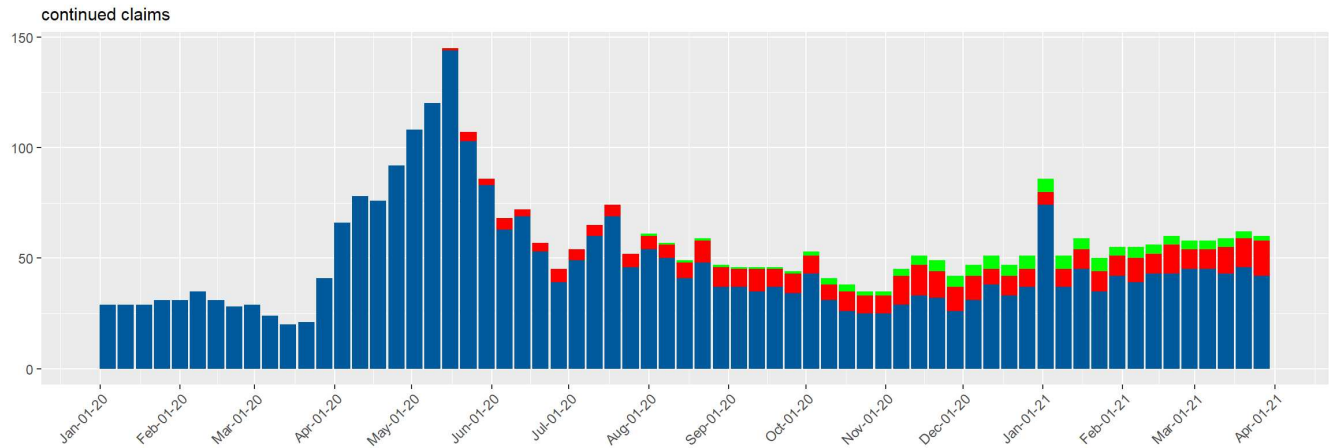
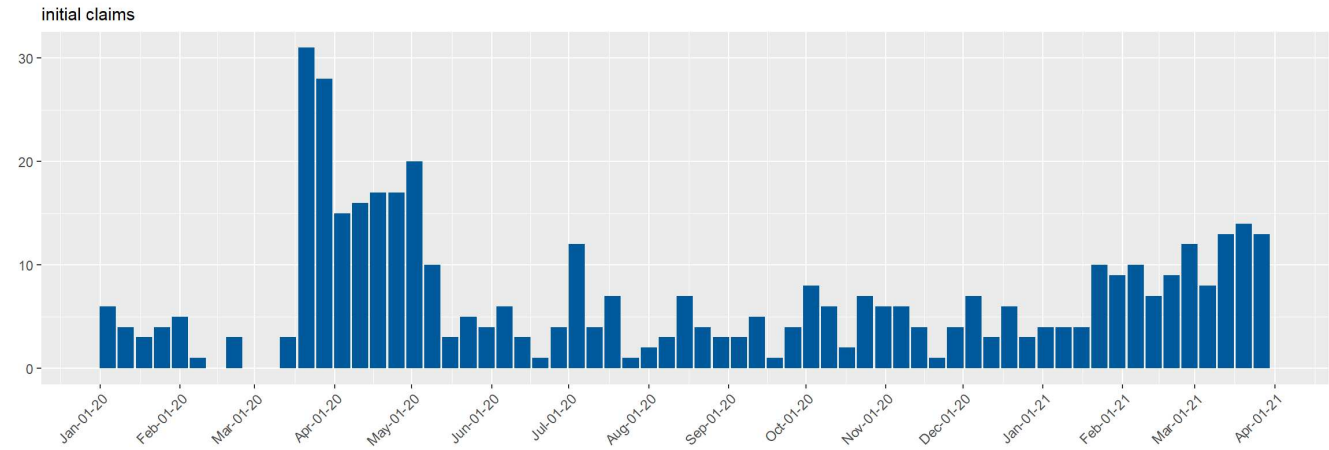
UI Claims for Nye County

Nye County Unemployment Insurance Claims by Week since January 2020



UI Claims for Pershing County

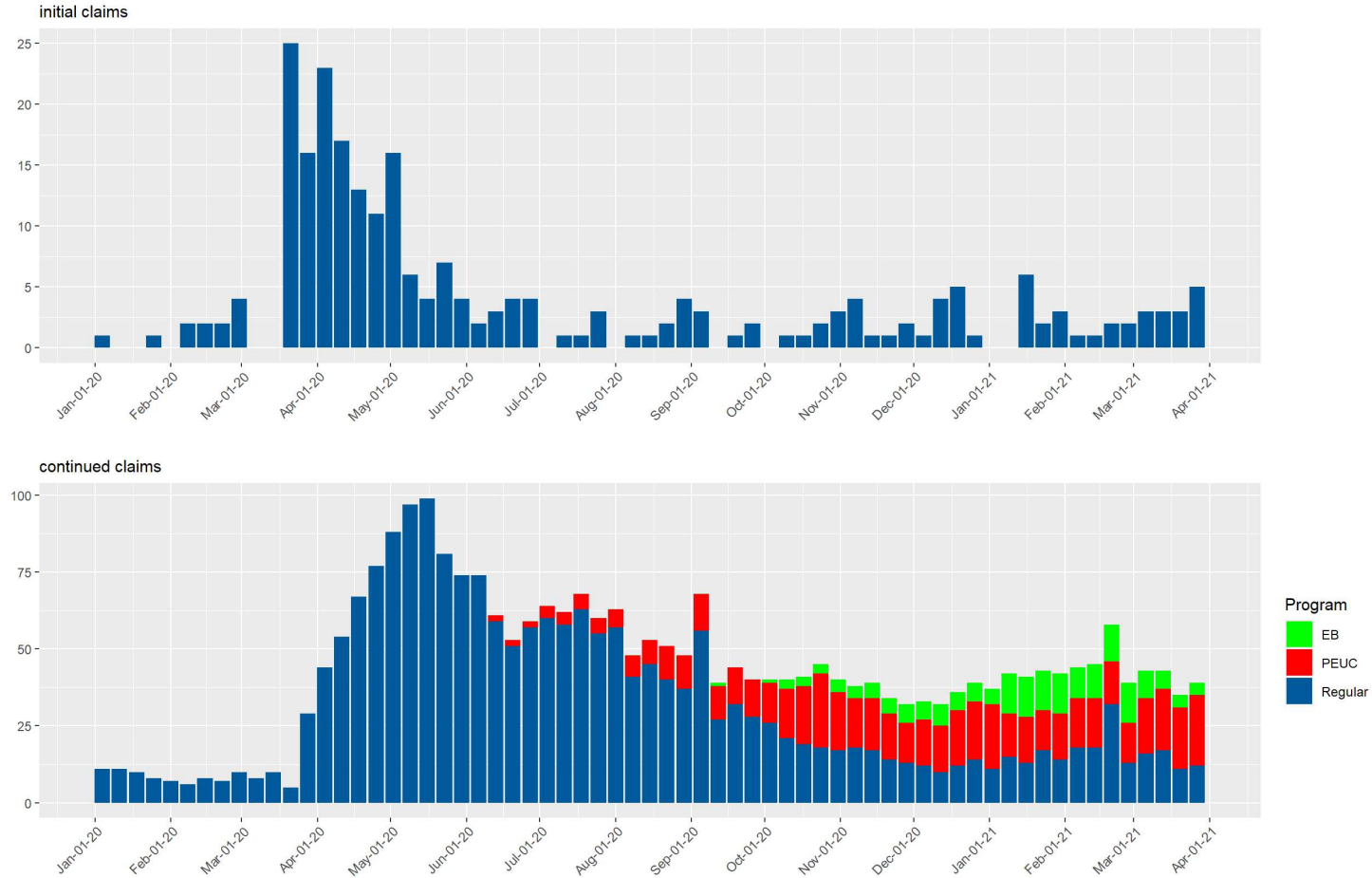
Pershing County Unemployment Insurance Claims by Week since January 2020



Source: DETR Internal Reporting

UI Claims for Storey County

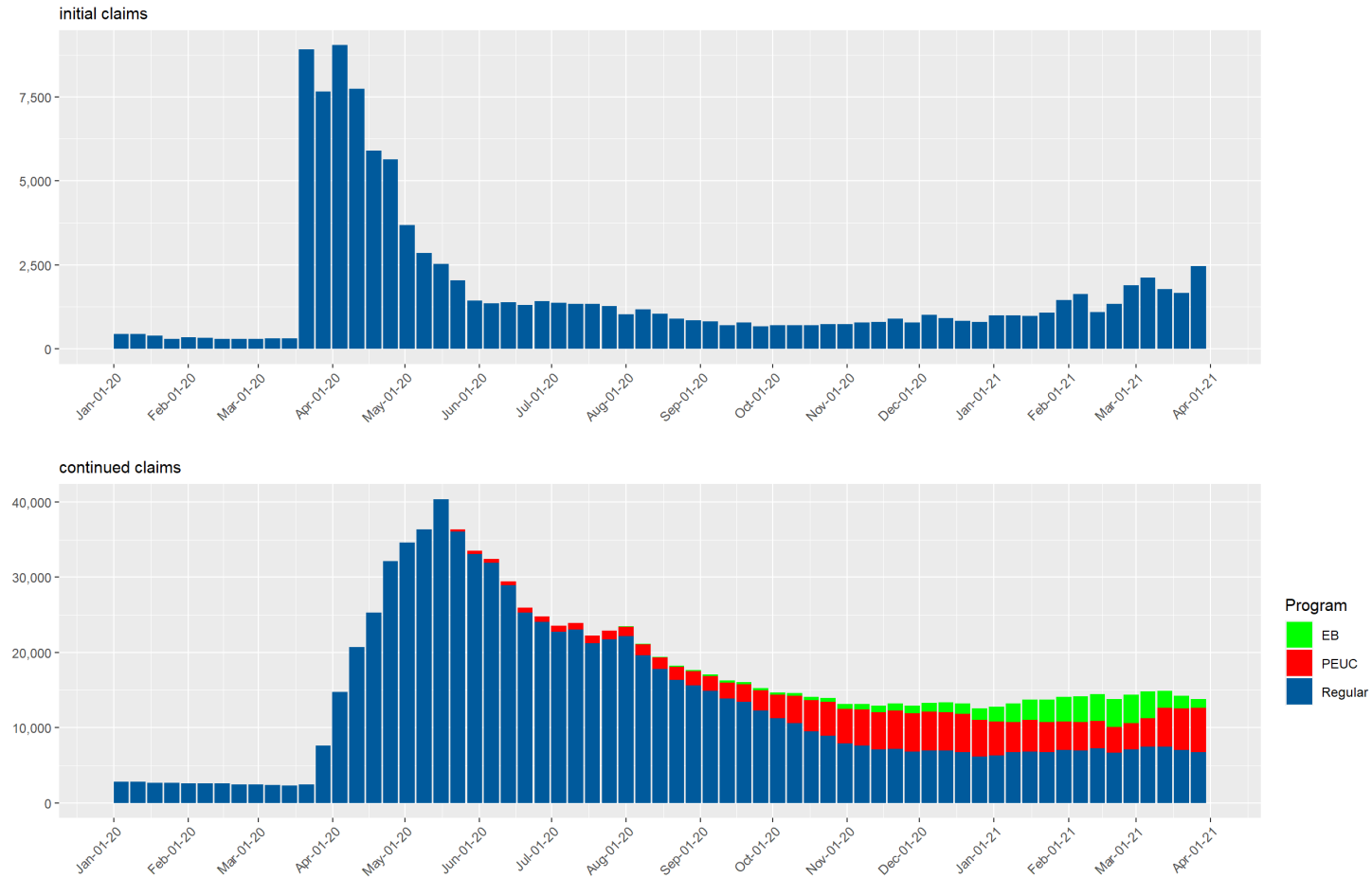
Storey County Unemployment Insurance Claims by Week since January 2020



Source: DETR Internal Reporting

UI Claims for Washoe County

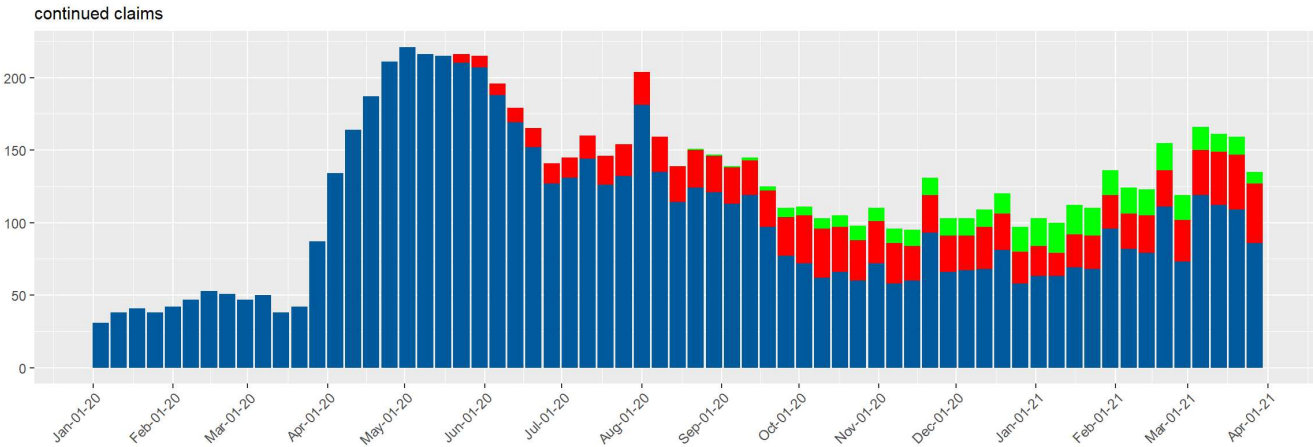
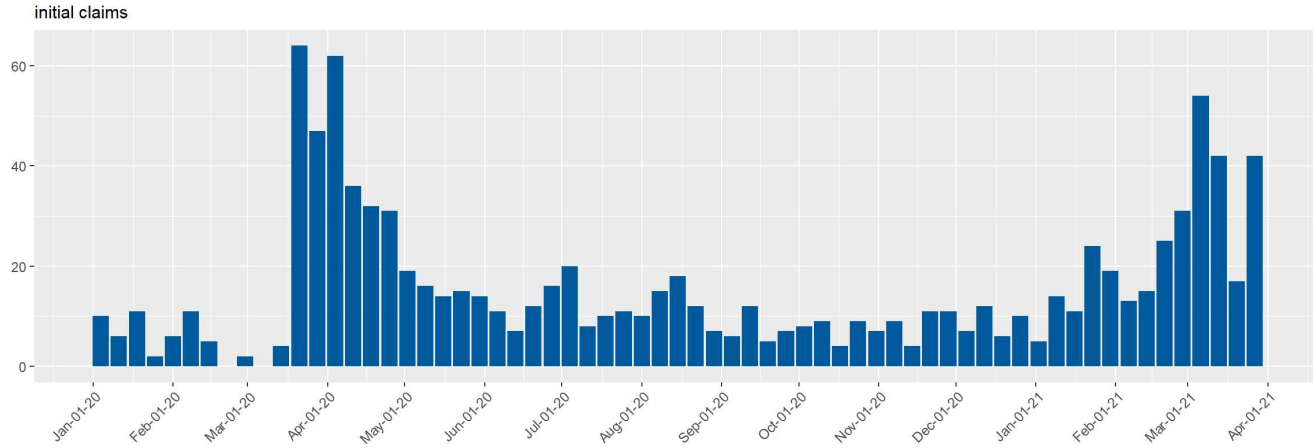
Washoe County Unemployment Insurance Claims by Week since January 2020



Source: DETR Internal Reporting

UI Claims for White Pine County

White Pine County Unemployment Insurance Claims by Week since January 2020



Source: DETR Internal Reporting

Data Dashboard Page

In effort to limit the overall length of this report, links to our interactive reports are below.

Weekly Reports

Weekly Claims Dashboard

The claims data contained on the ETA 539 report are used in current economic analysis of unemployment trends in Nevada.

Weekly Claims by County

The claims data contained in this dashboard provide unemployment insurance trends by county in the State of Nevada. This dashboard allows for exploration of these trends.

Monthly Reports

Monthly Claims Dashboard

The ETA 5159 report contains monthly information on claims activities and on the number and amount of payments under state unemployment insurance laws. The data on this report provides the basis for many common UI measures such as average duration, exhaustion rates, weeks compensated, and benefits paid. This dashboard allows for exploration of these measures and trends in the State of Nevada.

Monthly Claims Demographics

The ETA 203 report provides information about the characteristics of Unemployment Insurance (UI) claimants in Nevada. This data is useful in describing the population of claimants and determining how that population changes over time and under various conditions. It can also be compared with characteristic figures of the total unemployed as published by the Bureau of Labor Statistics (BLS).

Glossary of Terms

Initial Claim: Any notice of unemployment filed to request a determination of eligibility for unemployment insurance benefits, or to begin a subsequent period of eligibility within a period of eligibility. Initial claims measure emerging unemployment in the state.

Additional Claim: An initial Claim which reopens a previously existing claim, where the claimant stopped filing due to intervening employment.

Reopened Claim: A reopened claim is filed if you have previously filed a claim but never submitted any weekly claims.

Continued Claim: After an initial claim determines a claimant is eligible for unemployment insurance benefits, the claimant's weekly benefit claims are counted under continued claims. Continued claims in aggregate represents the insured unemployed receiving benefits in the state, and is used for economic purposes.

Credits

Special thanks to all the R and RStudio developers that built the packages to make this possible!

Packages used in this report: xaringan, xaringantheme, tidyverse, rmarkdown, viridis, scales, data.table, RcppRoll, kableExtra, knitr, patchwork, ggforce, ggthemes

Prepared by:
Department of Employment, Training & Rehabilitation
Research & Analysis Bureau