



# State of Nevada Unemployment Insurance Claims

Filing Statistics for Week Ending 04/16/2022

Department of Employment, Training & Rehabilitation

Elisa Cafferata, Director

Lynda Parven, Administrator

David Schmidt, Chief Economist

*Prepared by the Research and Analysis Bureau  
Updated: 2022-04-20*

# Weekly Federal UI Claim Statistics

# UI Initial Claims by Week

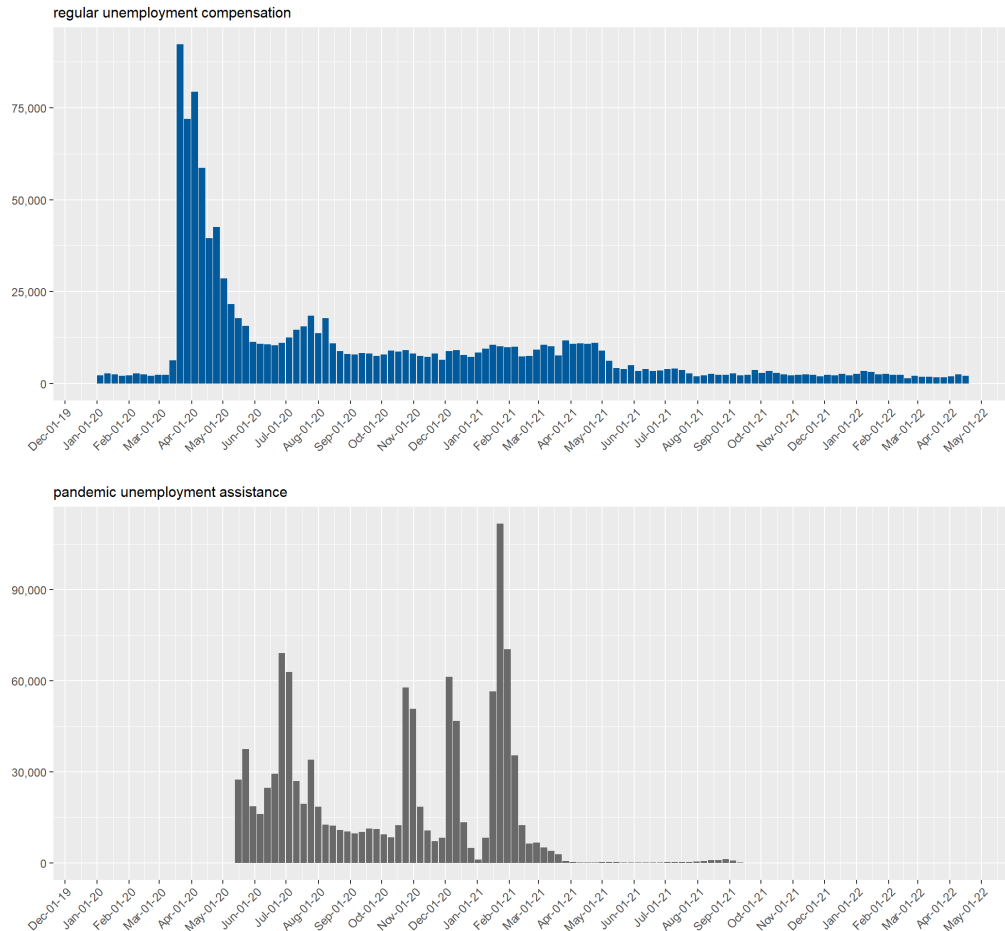
Final initial claims totals for week ending 04/16/2022 (ETA 539).

Regular initial claims totaled 2,107 in the week, down 324 claims, or 13.3%, compared to the previous week.

Pandemic Unemployment Assistance (PUA) claims totaled 0 in the week, down 0, or NA, compared to the previous week.

A claimant may have filed BOTH a regular initial claim and a PUA initial claim.

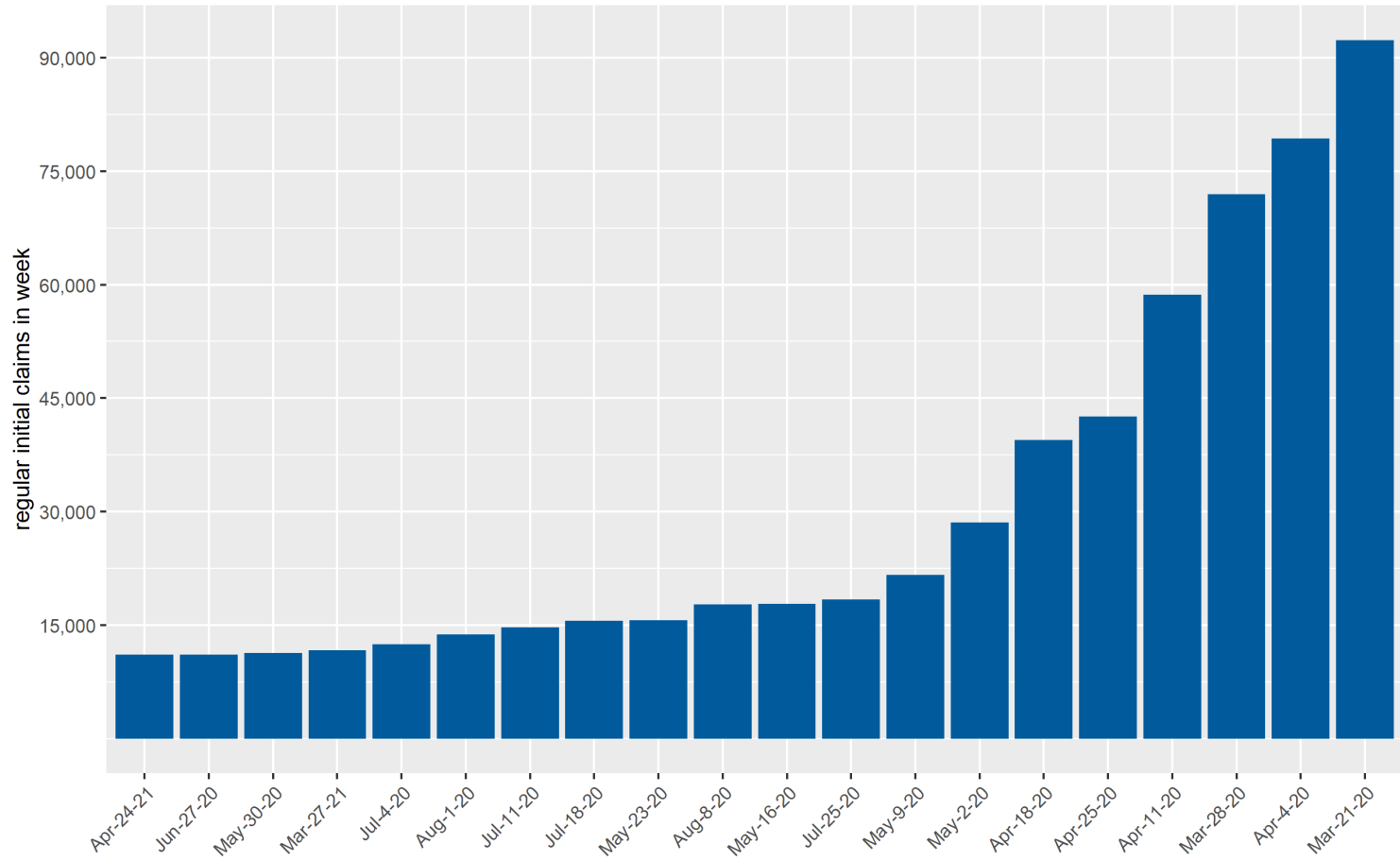
State of Nevada Weekly Initial Claims for Unemployment Insurance by program



Source: ETA 539

# State of Nevada Initial Claims All-Time Weekly Highs

State of Nevada Weekly Initial Claims  
highest 20 weeks in state history



Source: ETA 539

# UI Continued Claims by Week

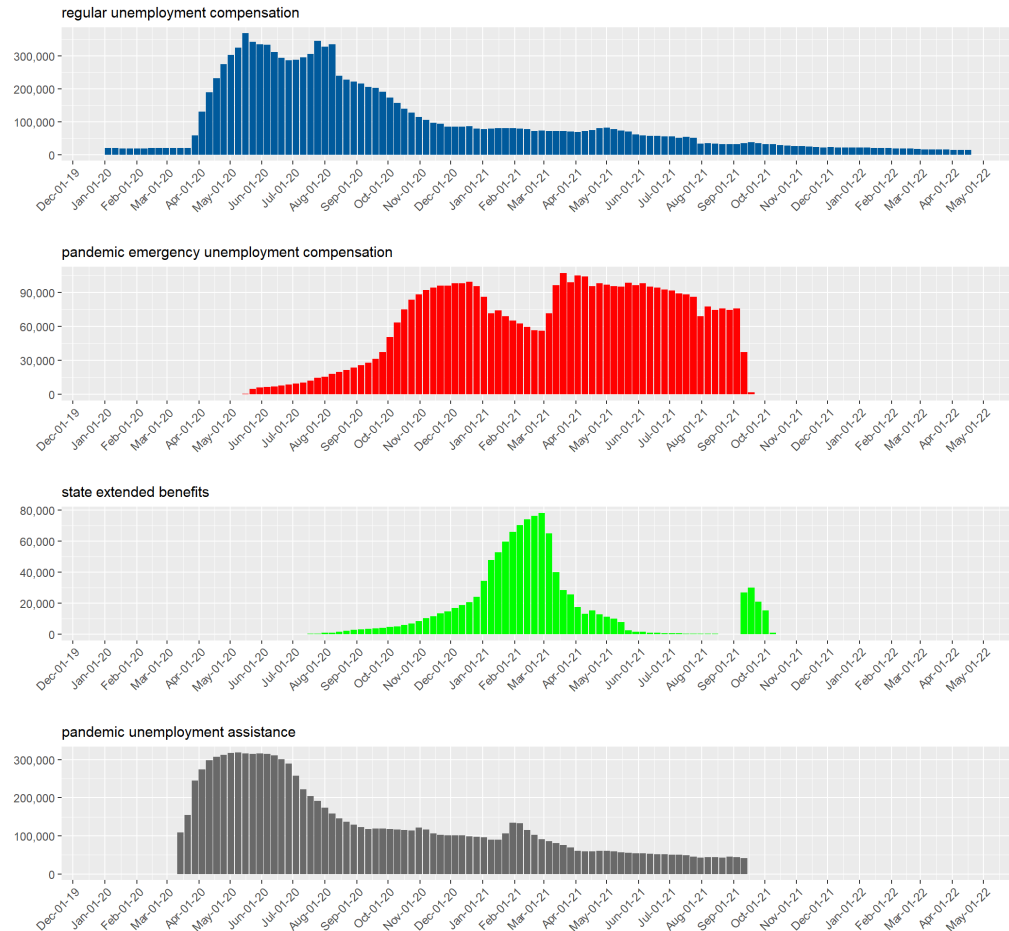
Regular continued claims totaled 13,779 in the week, up 246 claims, or 1.8%, compared to the previous week.

Pandemic Unemployment Assistance continued claims totaled 0 in the week, down 0 claims, or NA, compared to the previous week. PUA continued claims are backdated to show the weeks PUA was claimed.

Pandemic Emergency Unemployment Compensation claims totaled 0 in the week, down 0 claims, or NA, compared to the previous week.

State Extended Benefit claims totaled 2 in the week, down 2 claims, or 50.0%, compared to the previous week.

State of Nevada Weekly Continued Claims for Unemployment Insurance by program

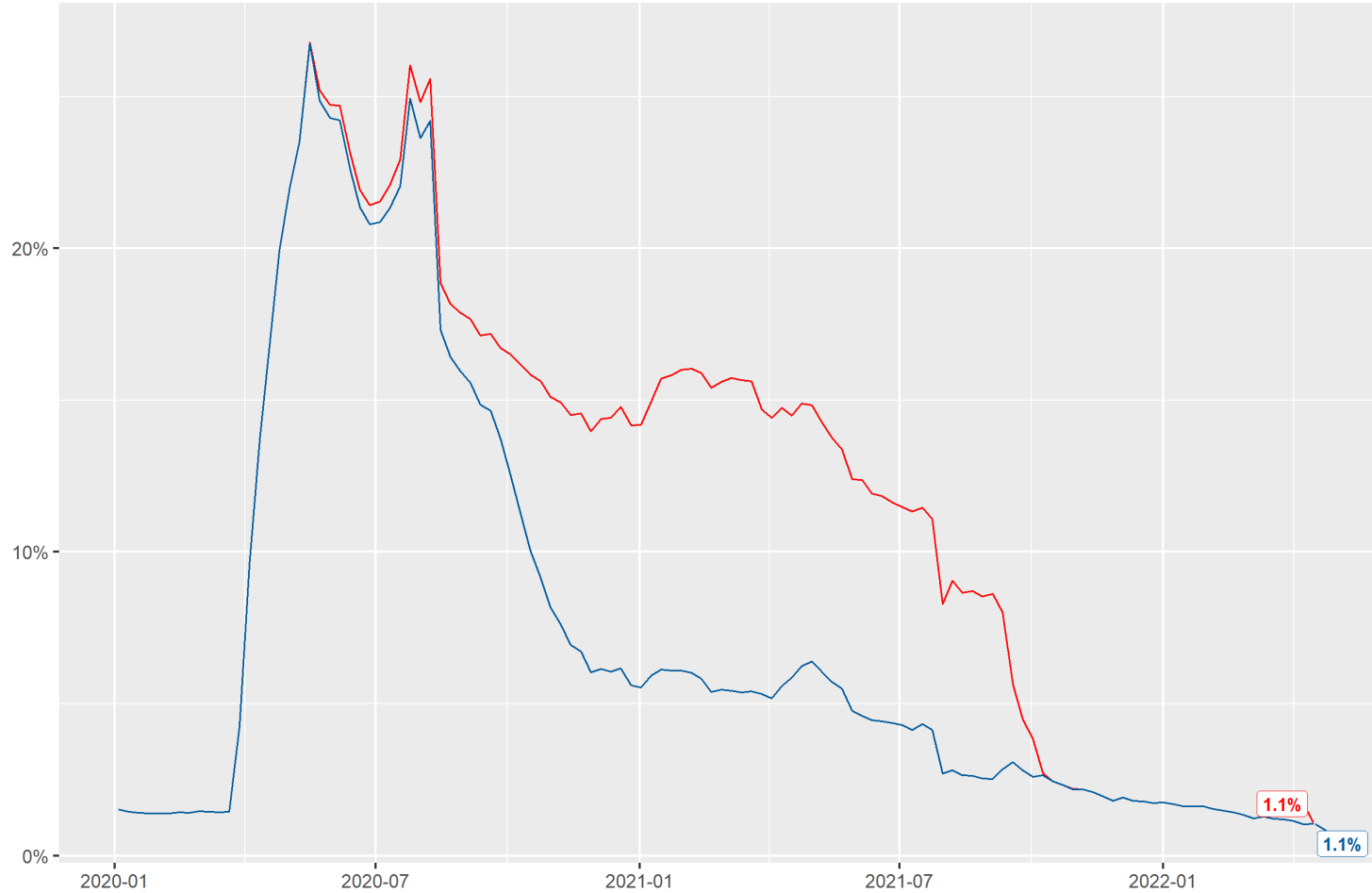


Source: ETA 539

# Insured Unemployment Rate

## State of Nevada Insured Unemployment Rate

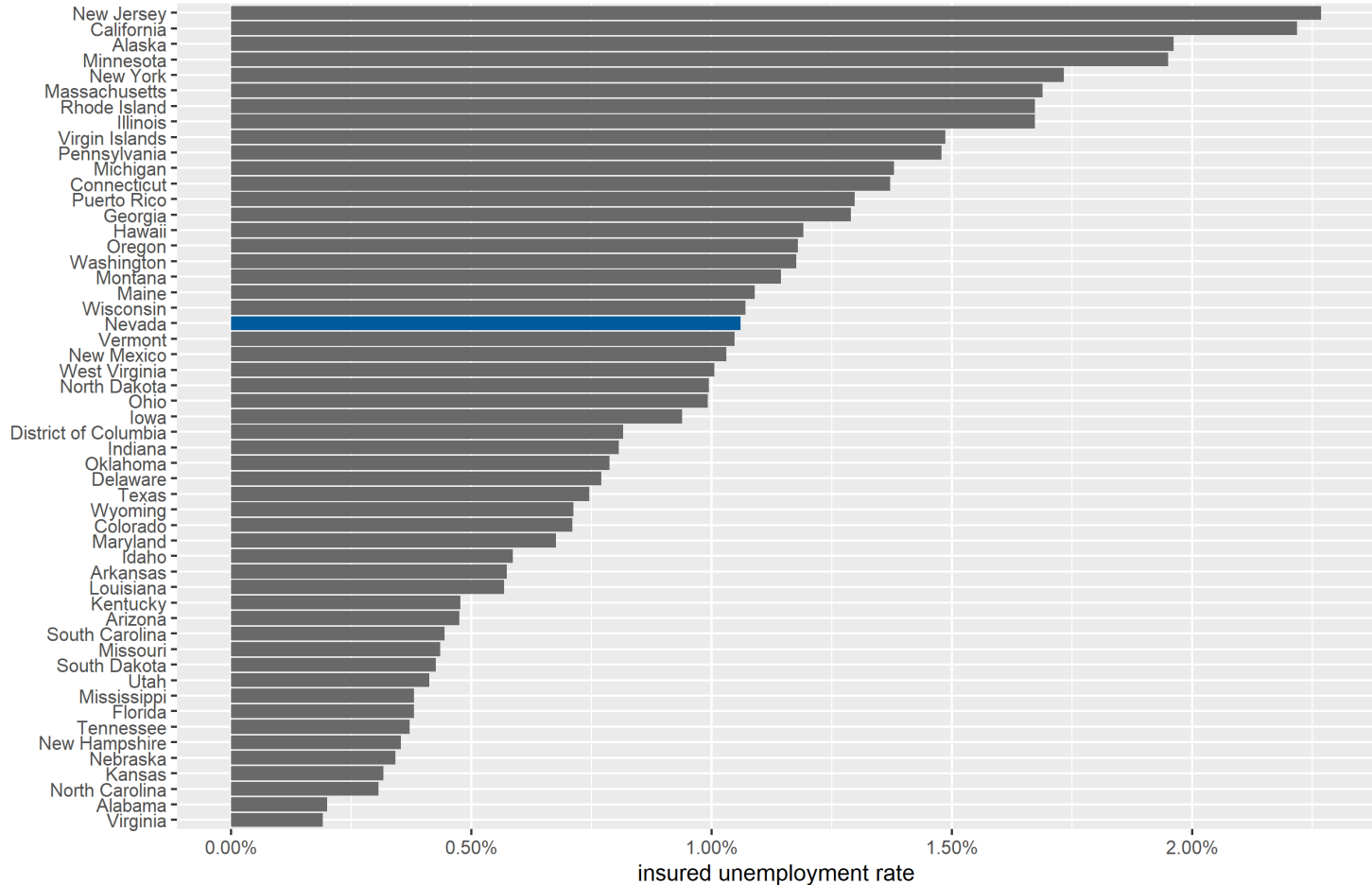
weekly rate for **regular** and **extension** programs



# Insured Unemployment Rate by State

## Insured Unemployment Rate by State

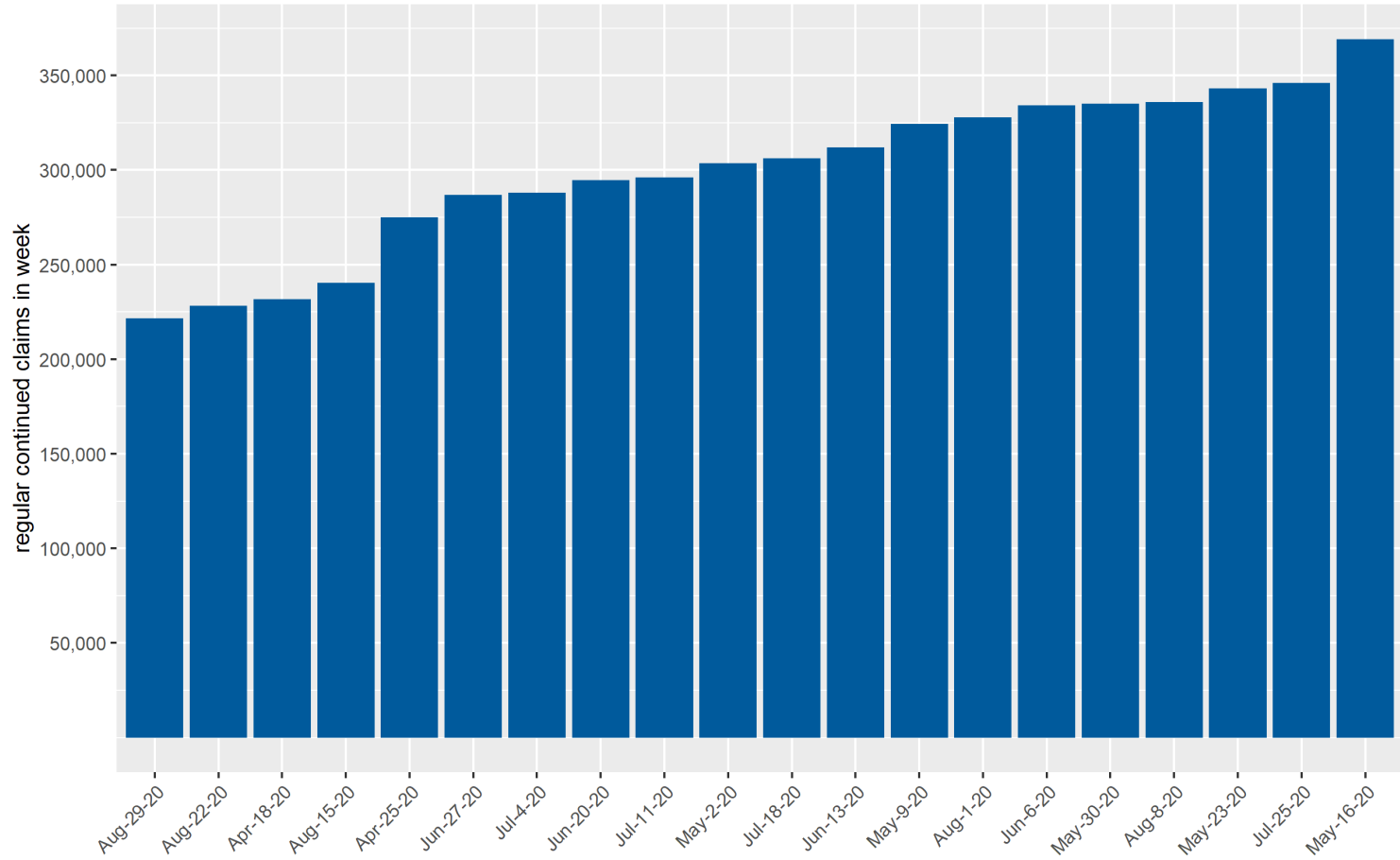
weekly rate by state for most recent available week



Source: ETA 539

# State of Nevada Continued Claims All-Time Weekly Highs

State of Nevada Weekly Continued Claims  
highest 20 weeks in state history



Source: ETA 539



# UI Trust Fund Status

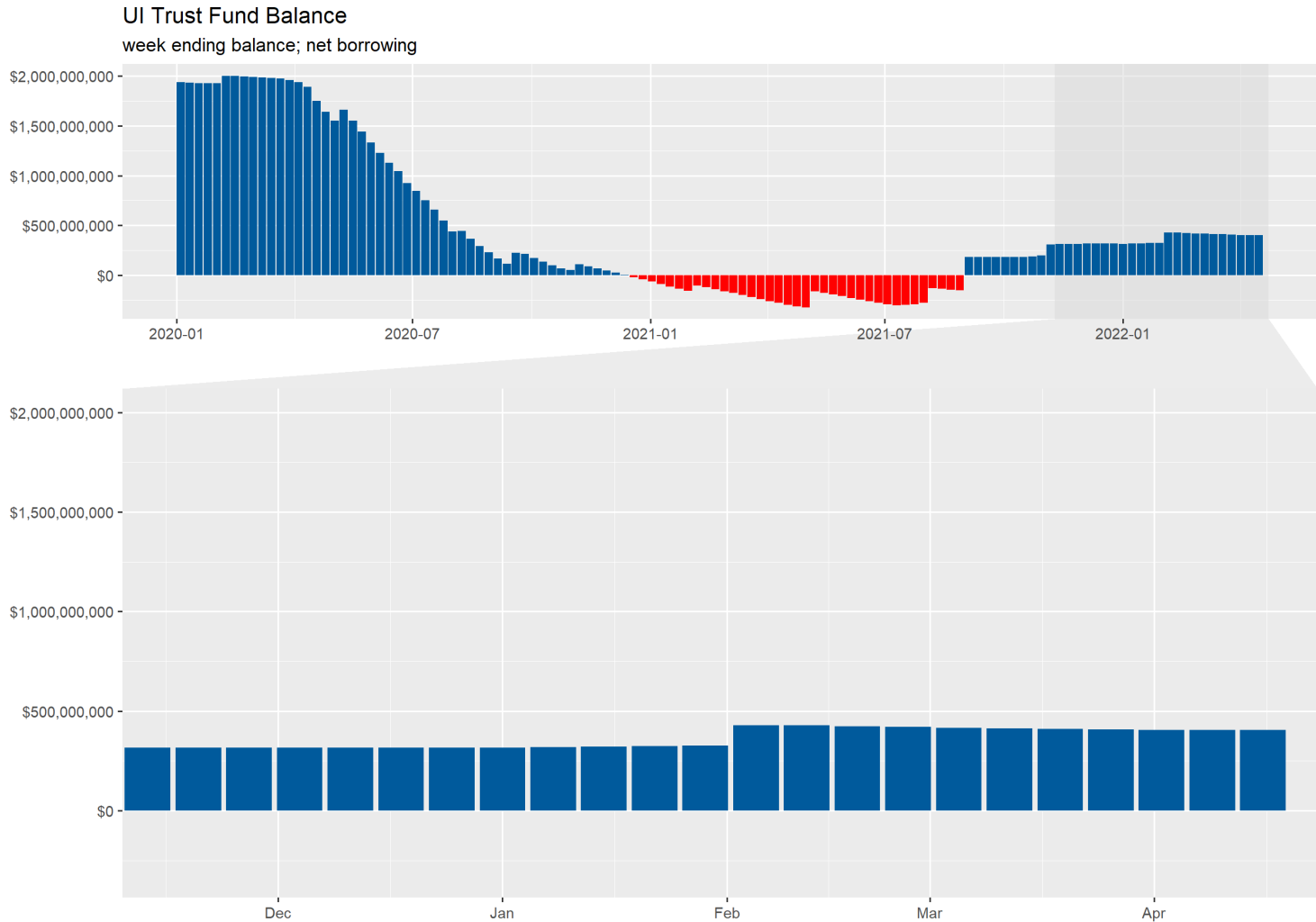
## UI Trust Fund Balance & Payment Activity

Reported totals and amounts for week ending 04/16/2022

The Trust Fund Balance is the end of week balance from DETR Financial Management reports less Federal Unemployment Account loans. Due to lags in reporting of transactions and adjustments, week-to-week totals may change.

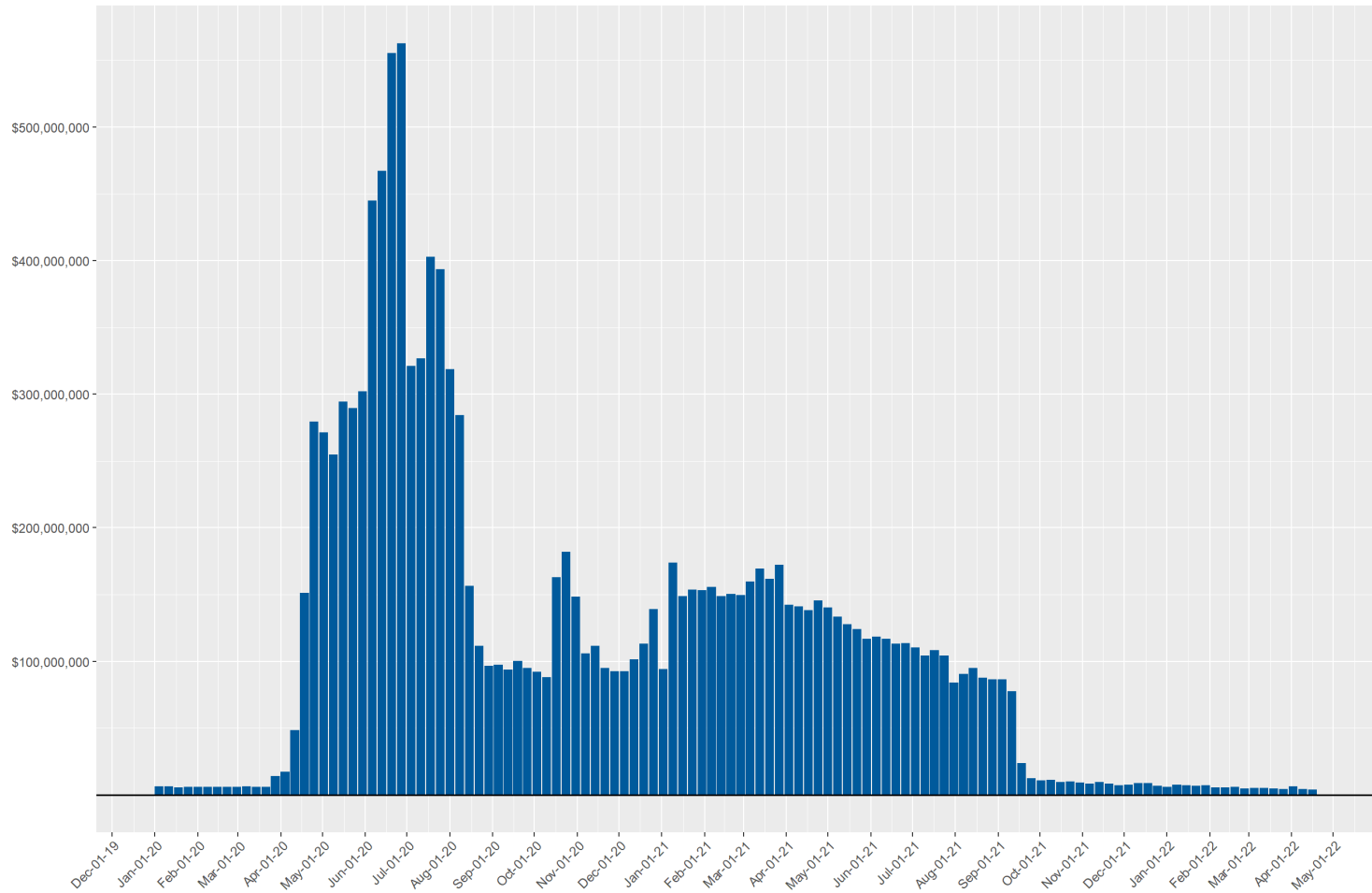
Measure	Current Week	Previous Week	Change from Previous Week	Since 3/14/2020
<b>Trust Fund Balance (Net Borrowing)</b>	\$404,169,104	\$404,299,883	-\$130,779	-
<b>FUA Borrowing</b>	\$0	\$0	\$0	-\$0
<b>Regular UI Payments</b>	\$3,258,904	\$3,325,104	-\$66,200	\$3,924,473,101
<b>Regular-FPUC Payments</b>	\$312,158	\$386,830	-\$74,672	\$4,526,011,185
<b>PEUC Payments</b>	\$133,061	\$176,660	-\$43,600	\$1,350,317,639
<b>PUA Payments</b>	\$184,756	\$122,725	\$62,031	\$1,250,525,292
<b>PUA-FPUC Payments</b>	\$148,725	\$130,560	\$18,164	\$1,488,571,225
<b>LWA Payments</b>	\$0	\$0	\$0	\$299,924,370
<b>LWA-PUA Payments</b>	\$0	\$0	\$0	\$96,109,621
<b>All Programs</b>	\$4,043,003	\$4,153,367	-\$110,364	\$13,229,200,024

# Trust Fund Balance



# Weekly Payments

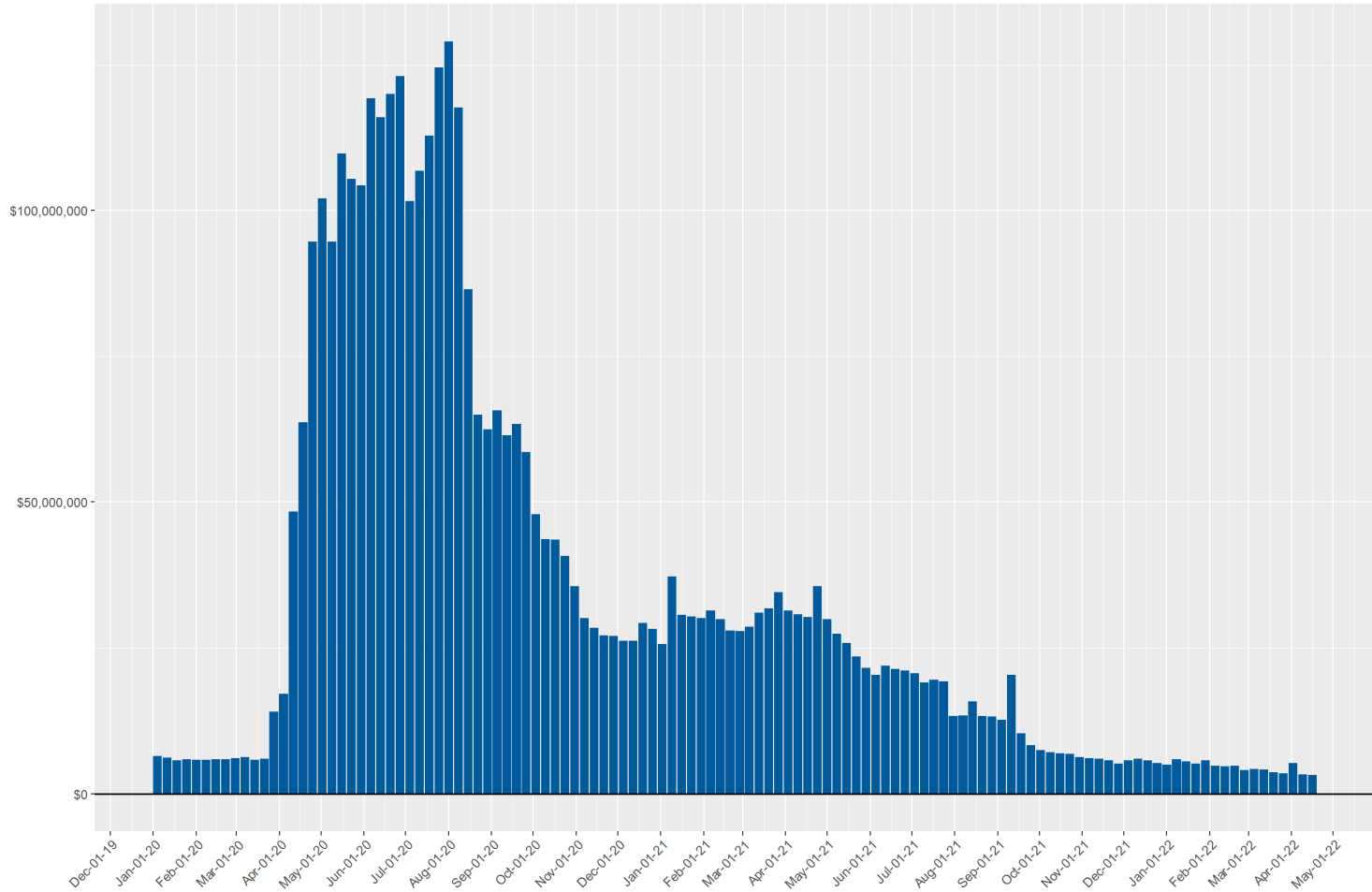
Unemployment Insurance Weekly Payments  
compensation total for all programs



Source: DETR Internal Reporting

# Weekly Payments by Program (Regular UI)

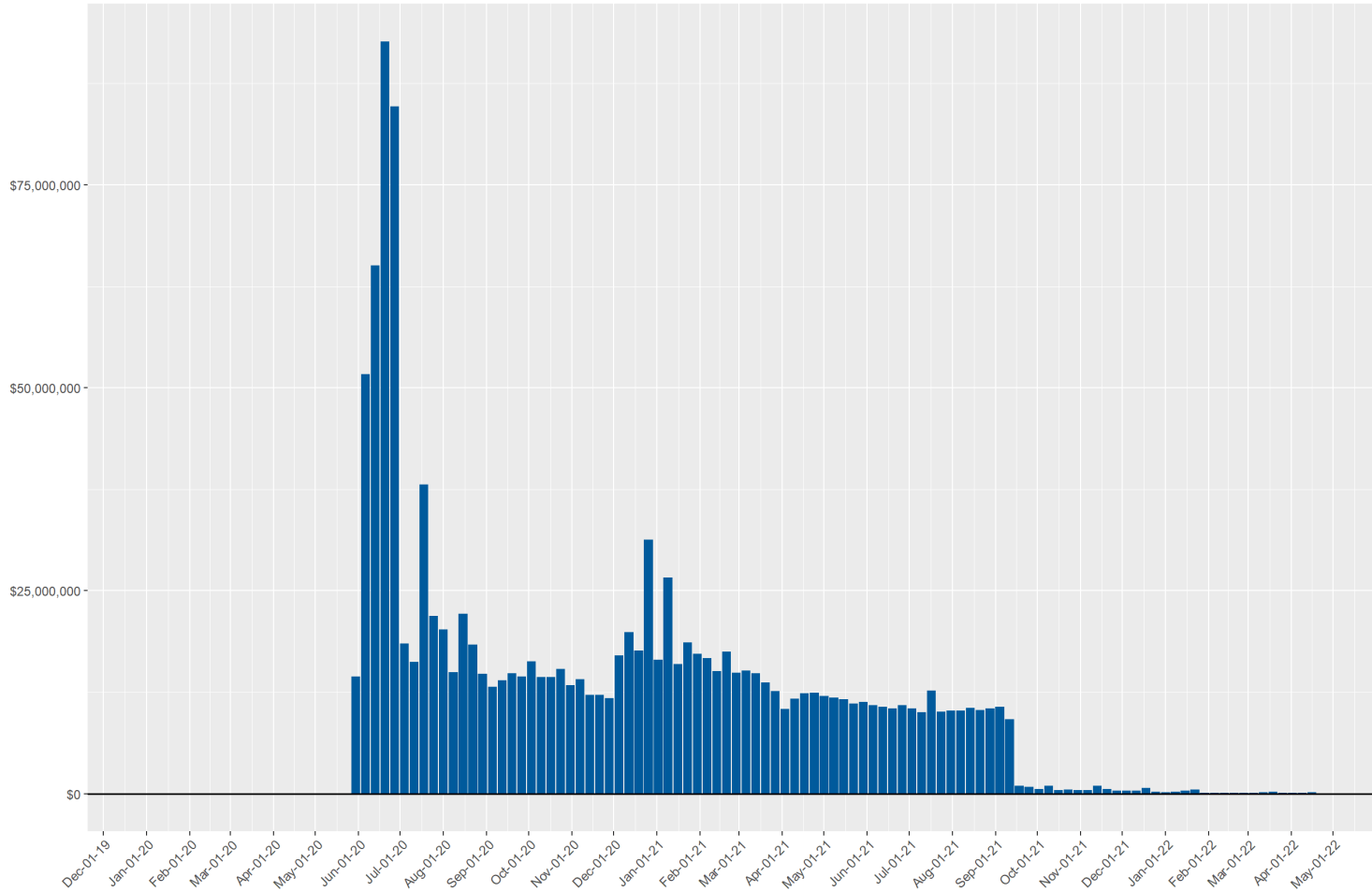
Unemployment Insurance Weekly Payments  
regular unemployment insurance compensation



Source: DETR Internal Reporting

# Weekly Payments by Program (PUA)

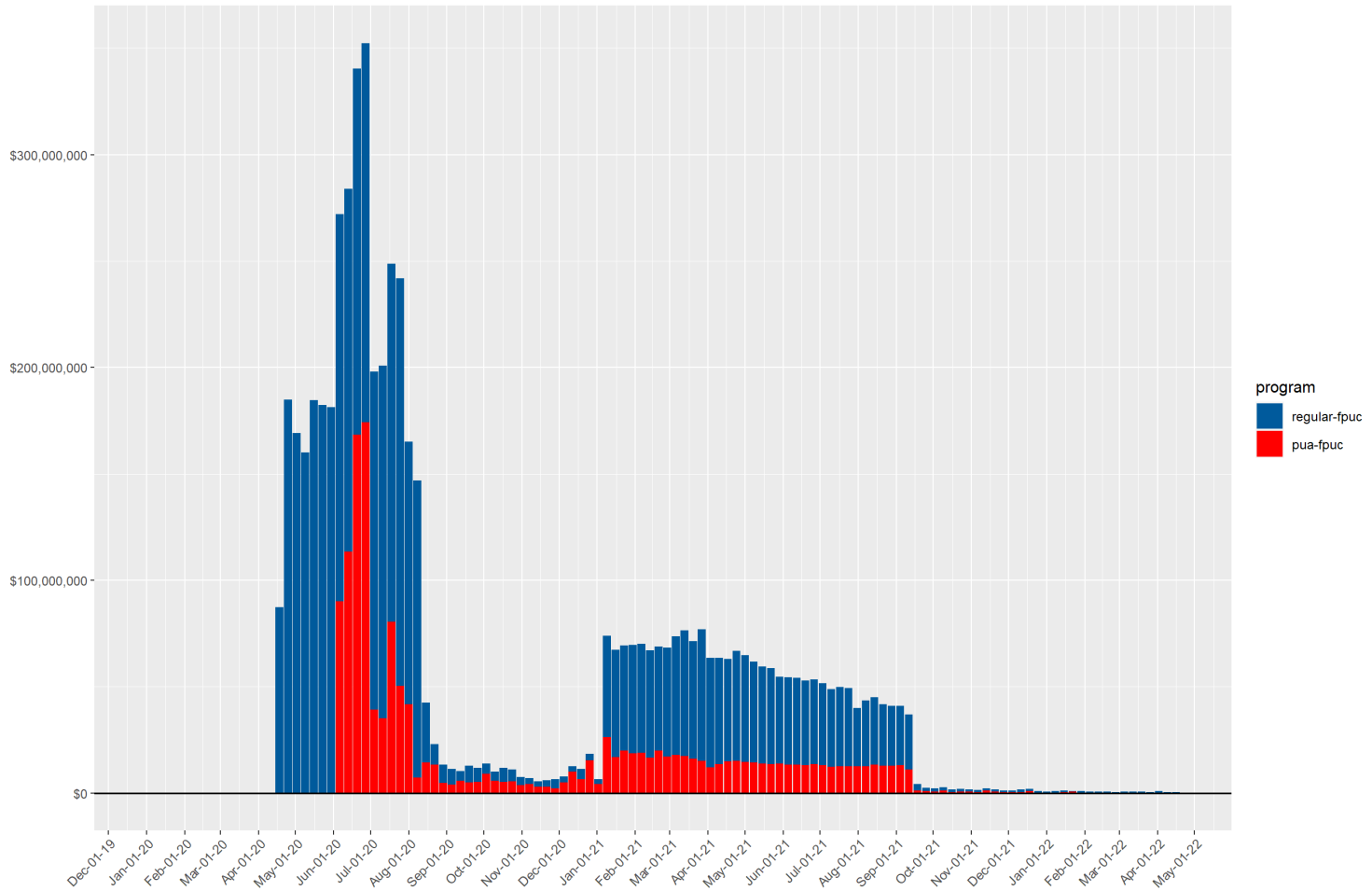
Unemployment Insurance Weekly Payments  
pandemic unemployment assistance compensation



Source: DETR Internal Reporting

# Weekly Payments by Program (FPUC)

Unemployment Insurance Weekly Payments  
federal pandemic unemployment compensation

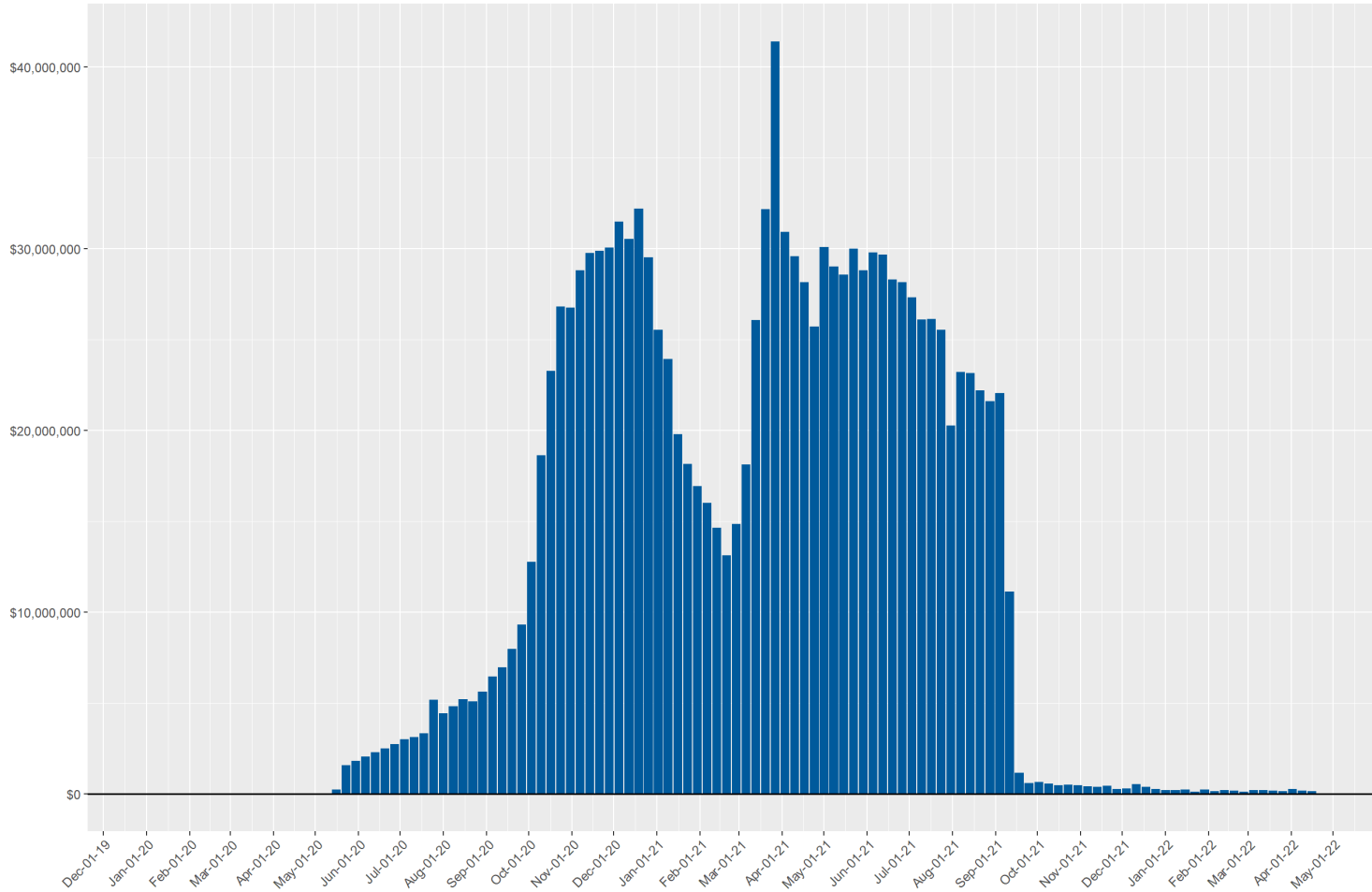


Source: DETR Internal Reporting

# Weekly Payments by Program (PEUC)

## Unemployment Insurance Weekly Payments

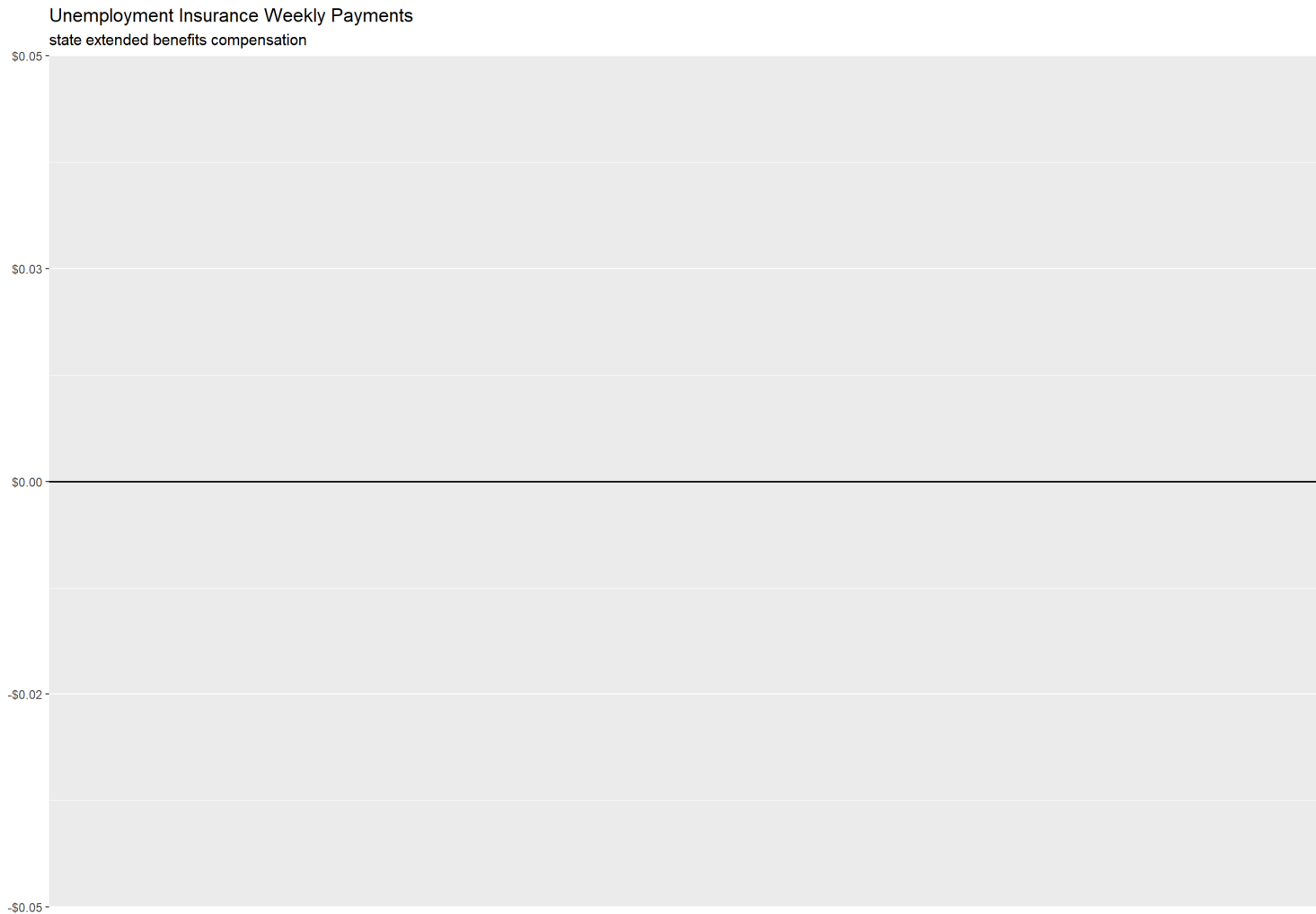
federal pandemic emergency unemployment compensation



Source: DETR Internal Reporting



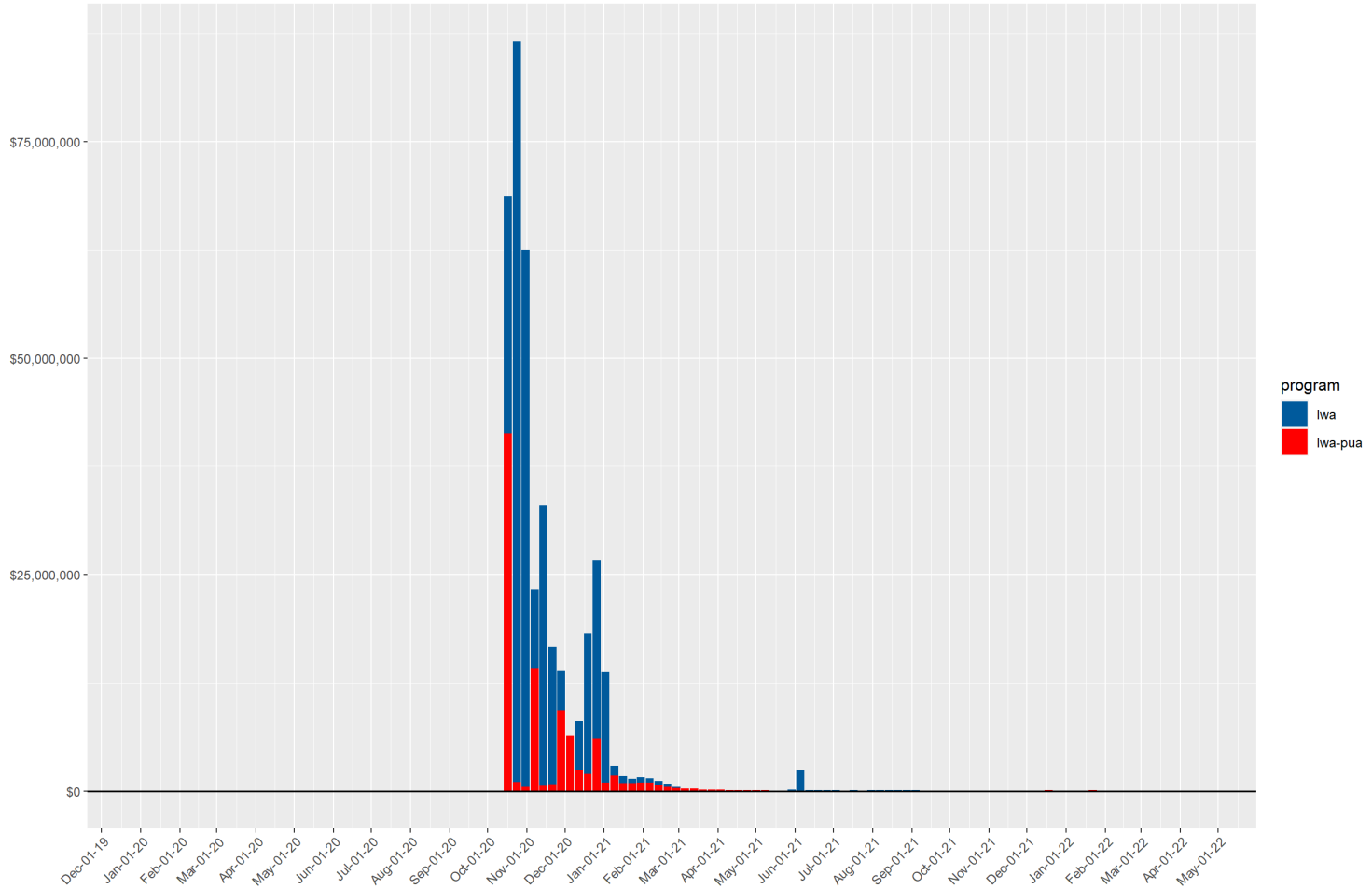
# Weekly Payments by Program (SEB)



Source: DETR Internal Reporting

# Weekly Payments by Program (LWA)

Unemployment Insurance Weekly Payments  
lost wages assistance compensation

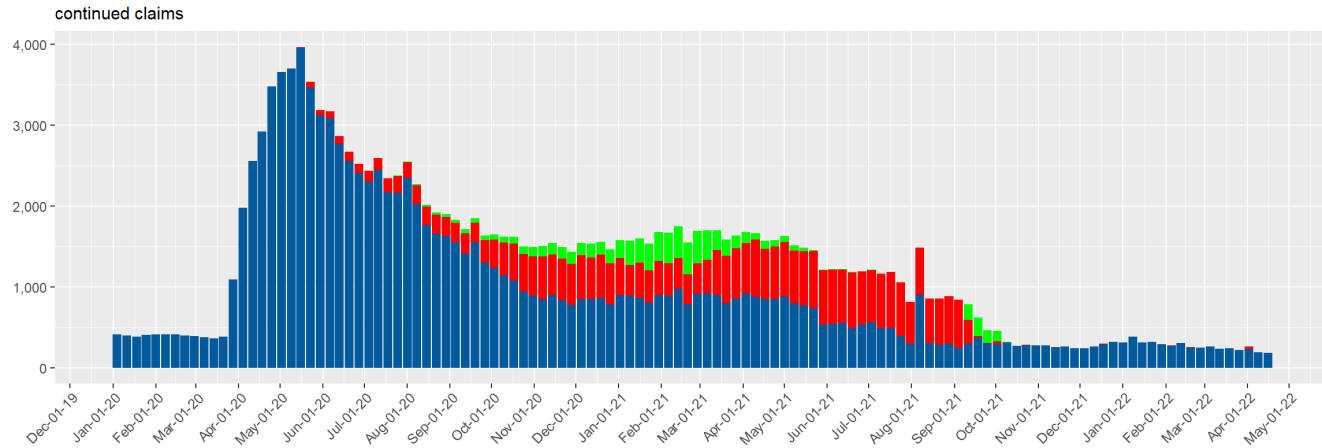
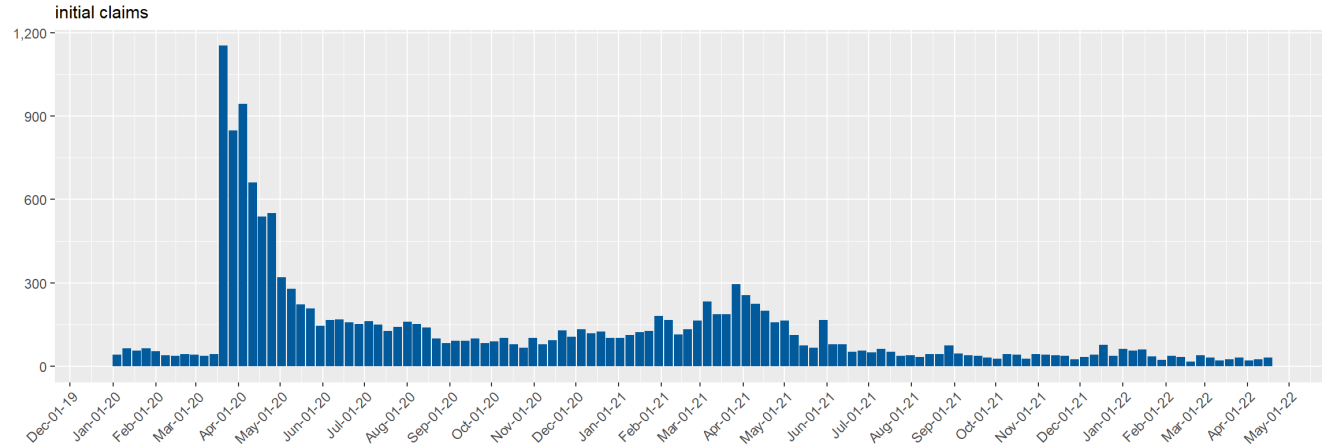


Source: DETR Internal Reporting

# Claims by County

# UI Claims for Carson City

Carson City Unemployment Insurance Claims by Week since January 2020

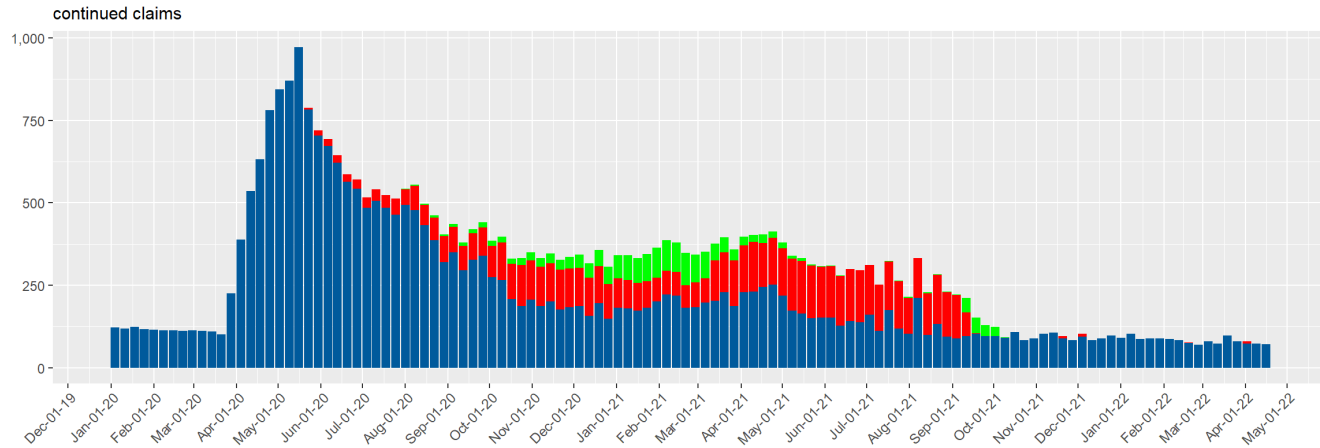
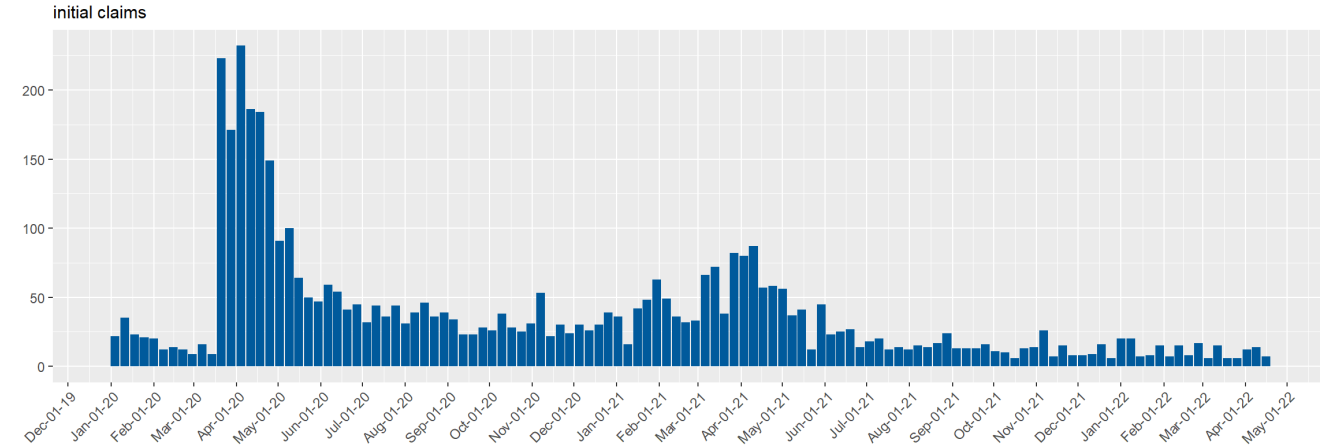


Program  
■ EB  
■ PEUC  
■ Regular

Source: DETR Internal Reporting

# UI Claims for Churchill County

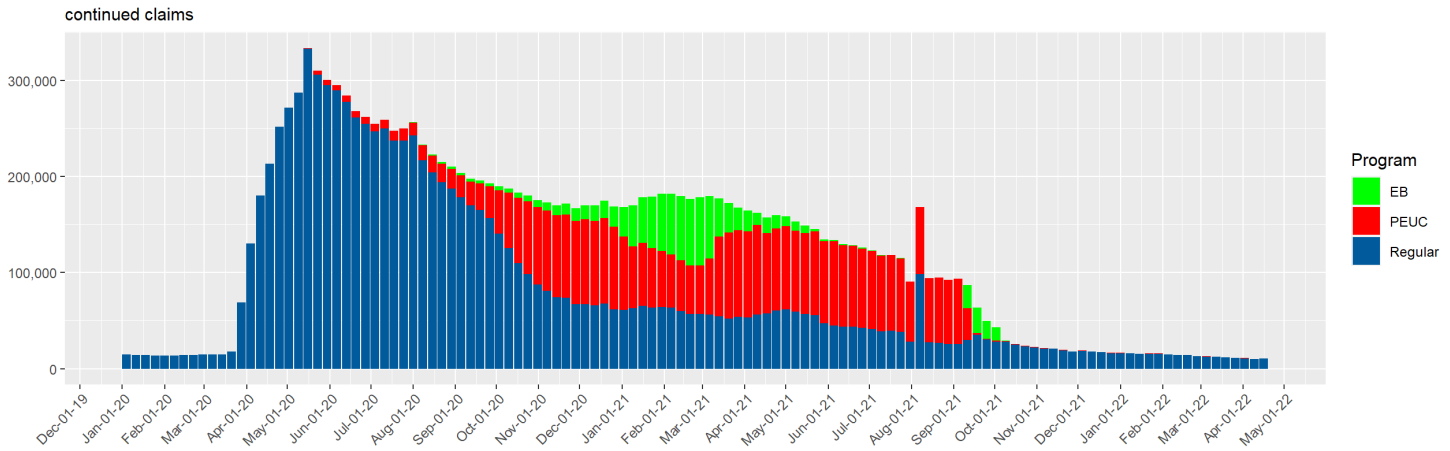
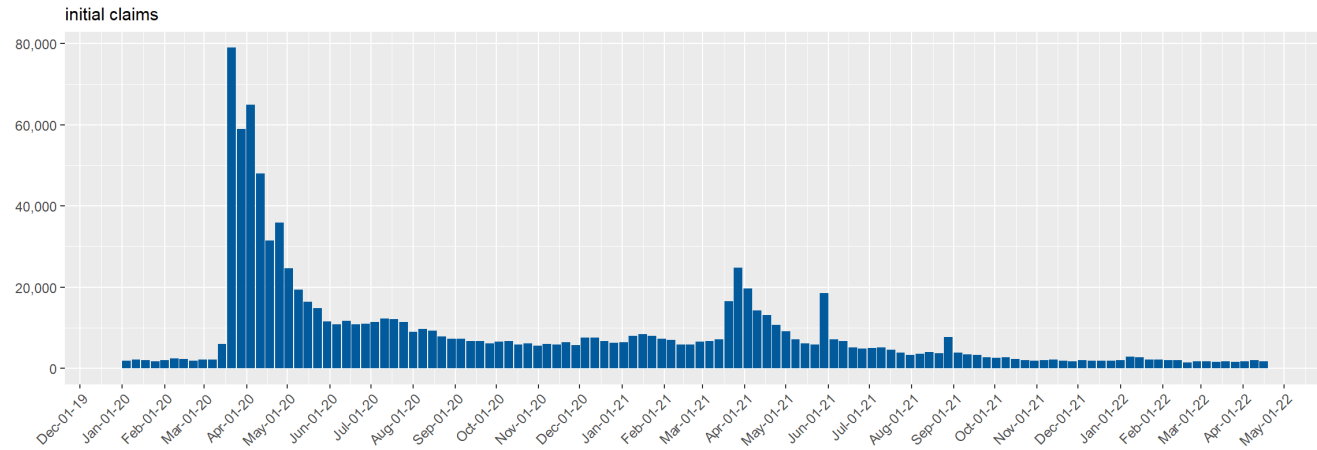
Churchill County Unemployment Insurance Claims by Week since January 2020



Source: DETR Internal Reporting

# UI Claims for Clark County

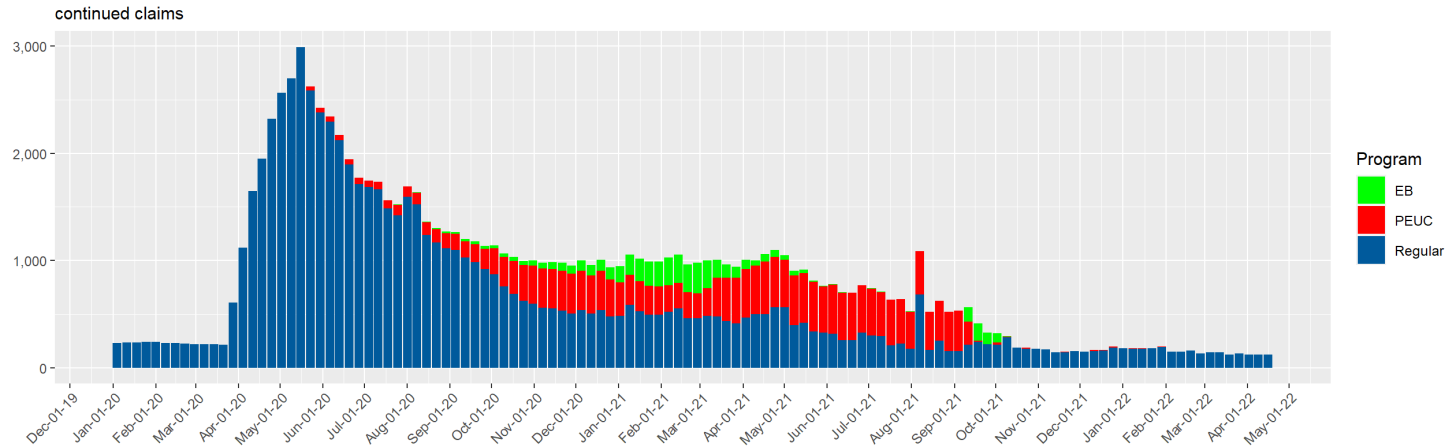
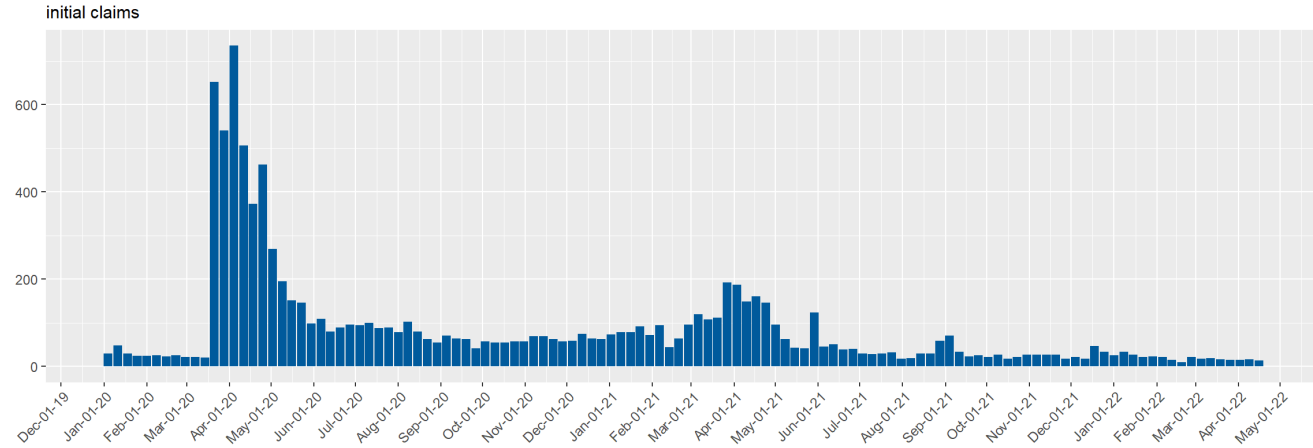
Clark County Unemployment Insurance Claims by Week since January 2020



Source: DETR Internal Reporting

# UI Claims for Douglas County

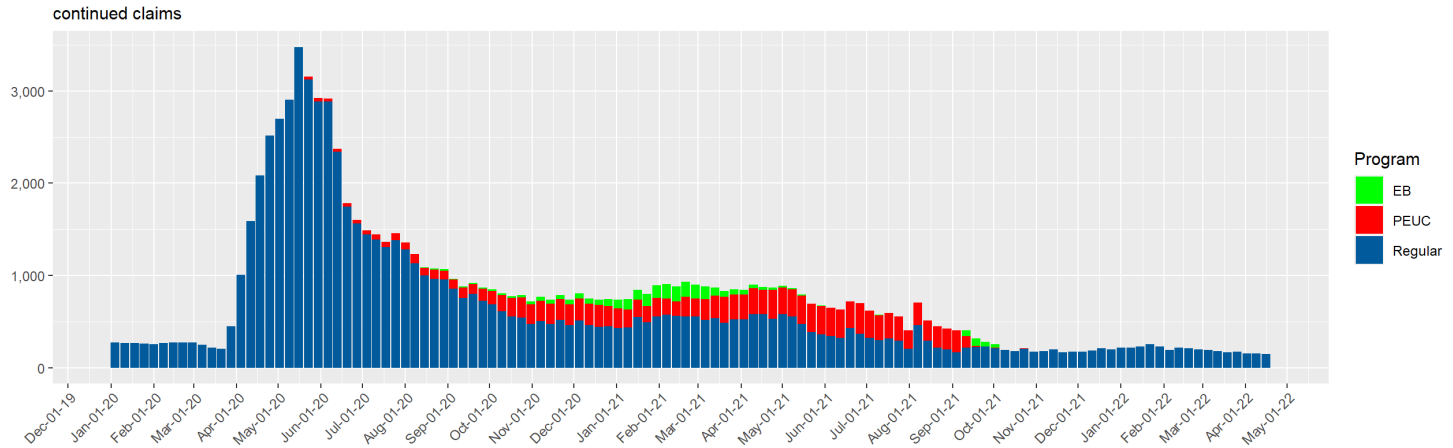
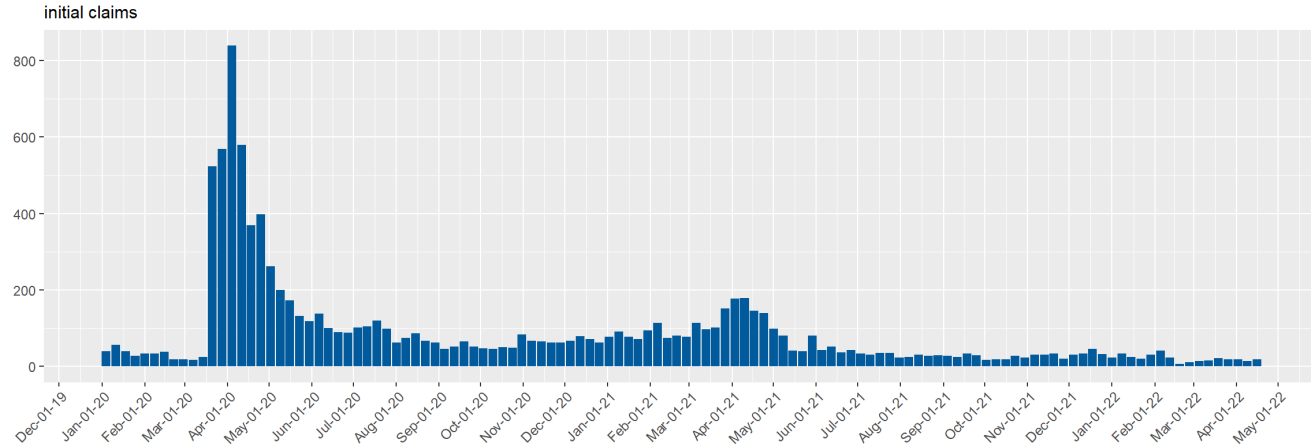
Douglas County Unemployment Insurance Claims by Week since January 2020



Source: DETR Internal Reporting

# UI Claims for Elko County

Elko County Unemployment Insurance Claims by Week since January 2020

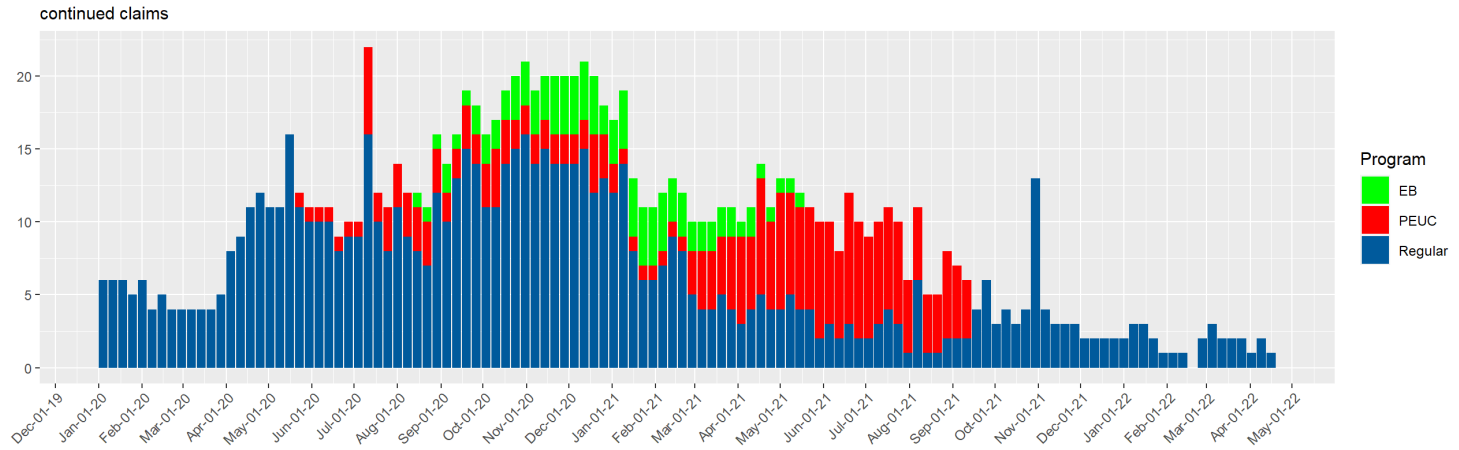
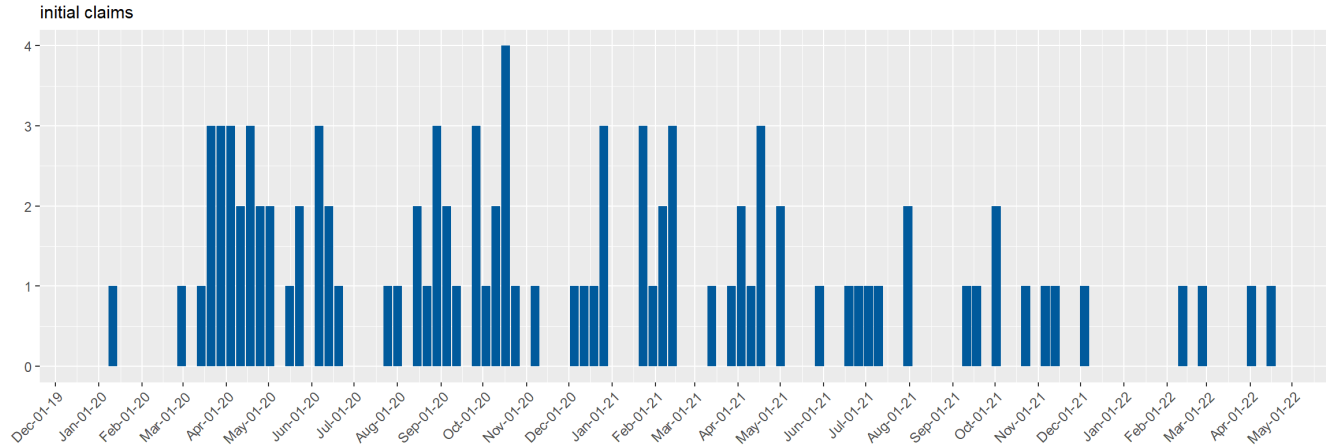


Source: DETR Internal Reporting



# UI Claims for Esmeralda County

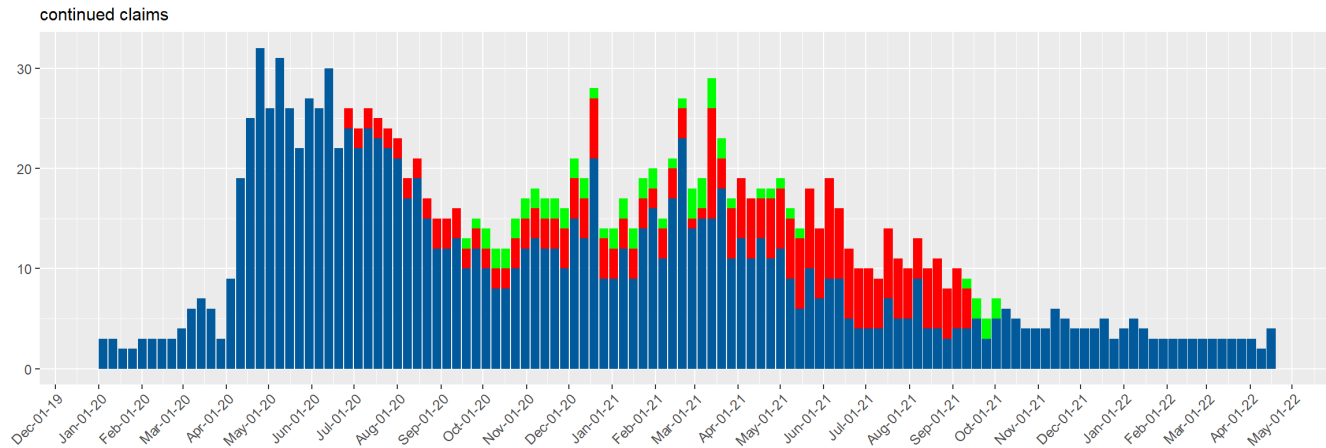
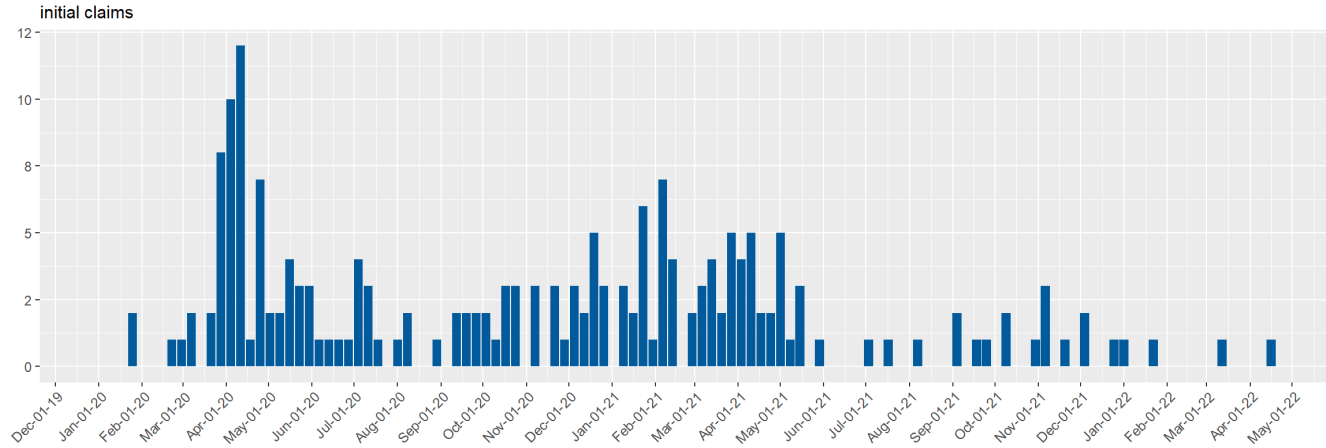
Esmeralda County Unemployment Insurance Claims by Week since January 2020



Source: DETR Internal Reporting

# UI Claims for Eureka County

Eureka County Unemployment Insurance Claims by Week since January 2020

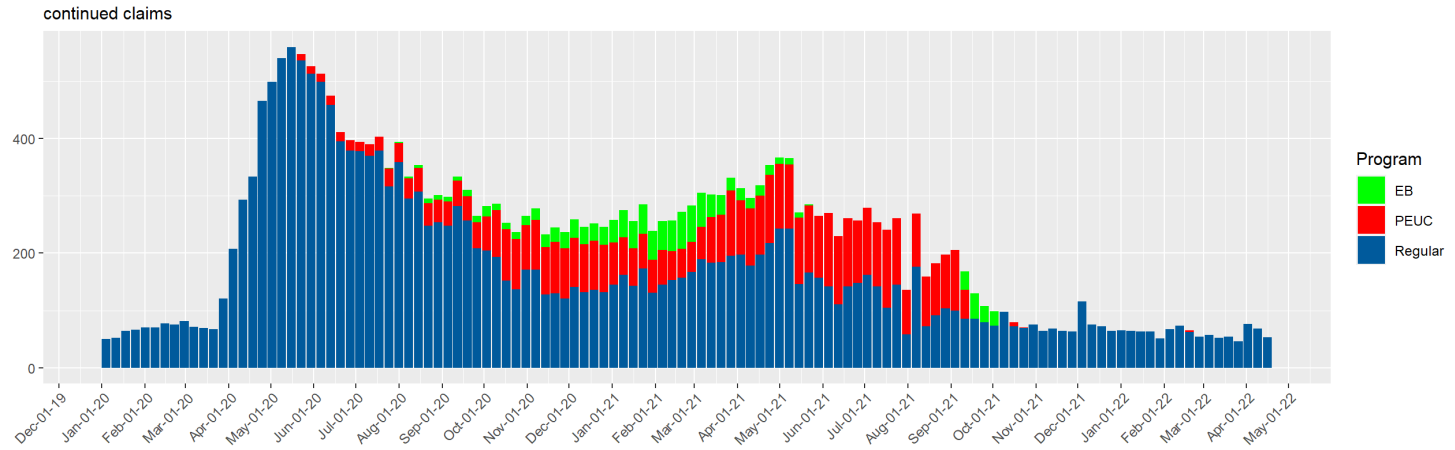
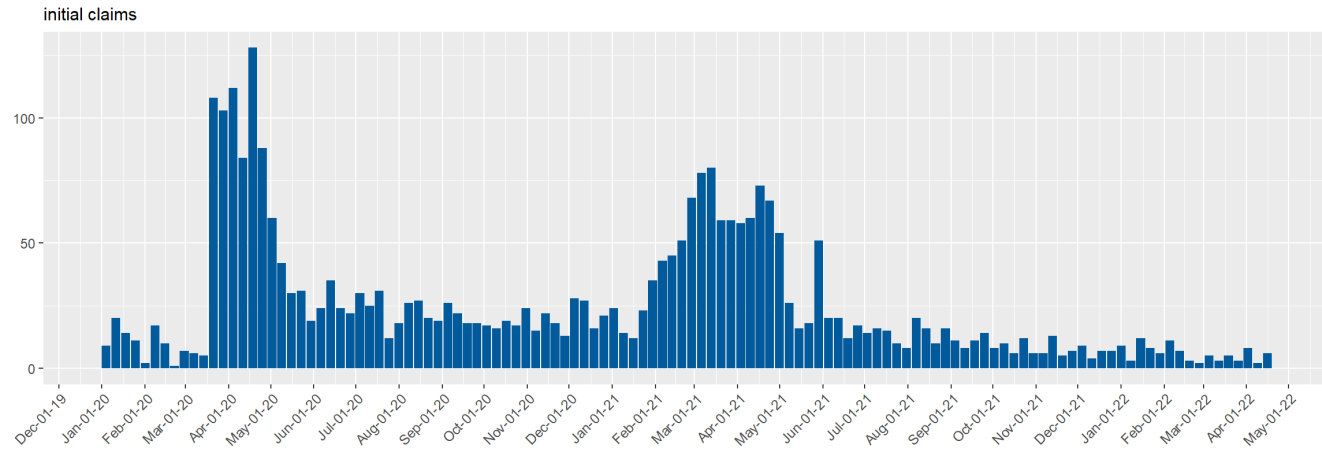


Program  
■ EB  
■ PEUC  
■ Regular

Source: DETR Internal Reporting

# UI Claims for Humboldt County

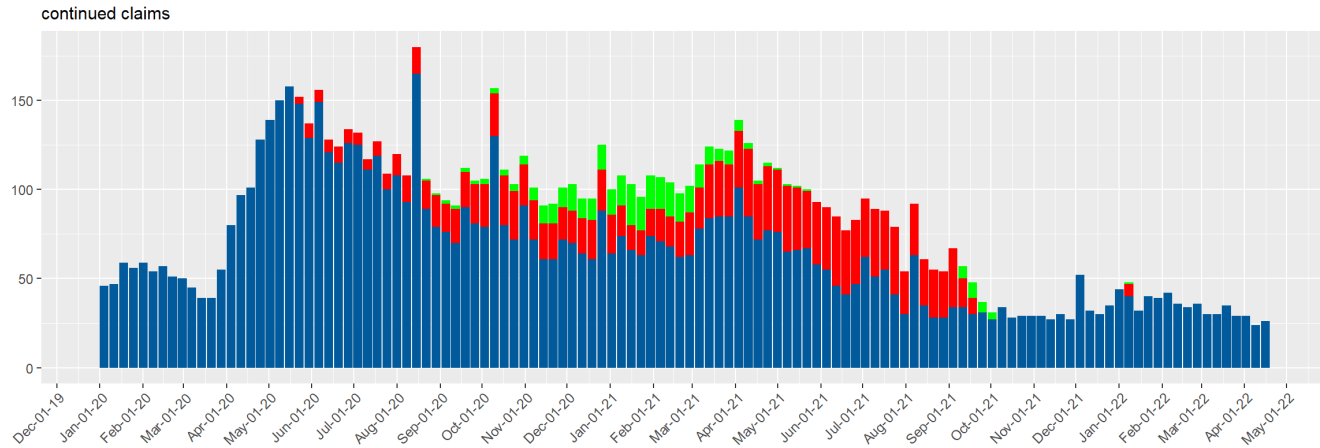
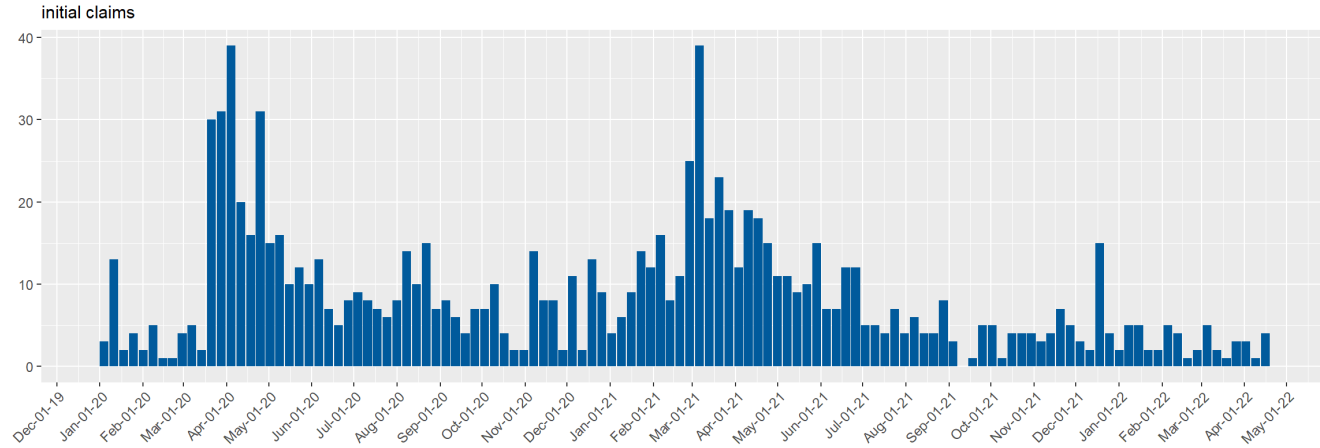
Humboldt County Unemployment Insurance Claims by Week  
since January 2020



Source: DETR Internal Reporting

# UI Claims for Lander County

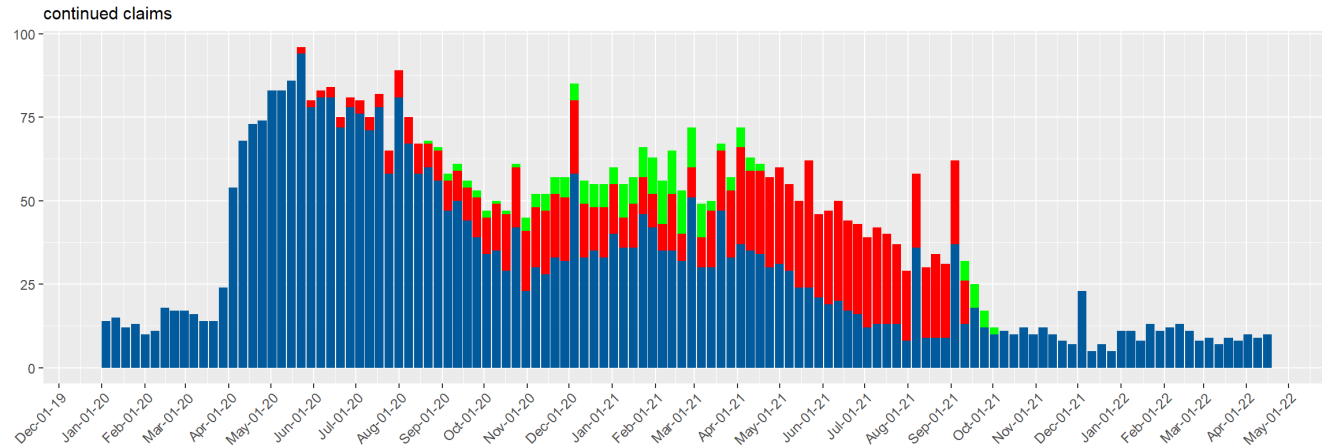
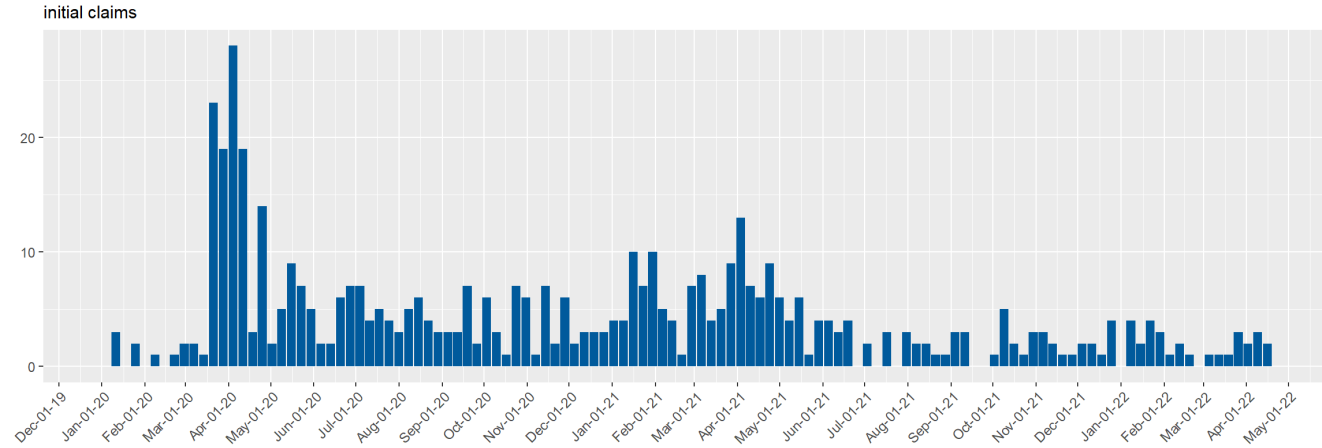
Lander County Unemployment Insurance Claims by Week since January 2020



Source: DETR Internal Reporting

# UI Claims for Lincoln County

Lincoln County Unemployment Insurance Claims by Week since January 2020

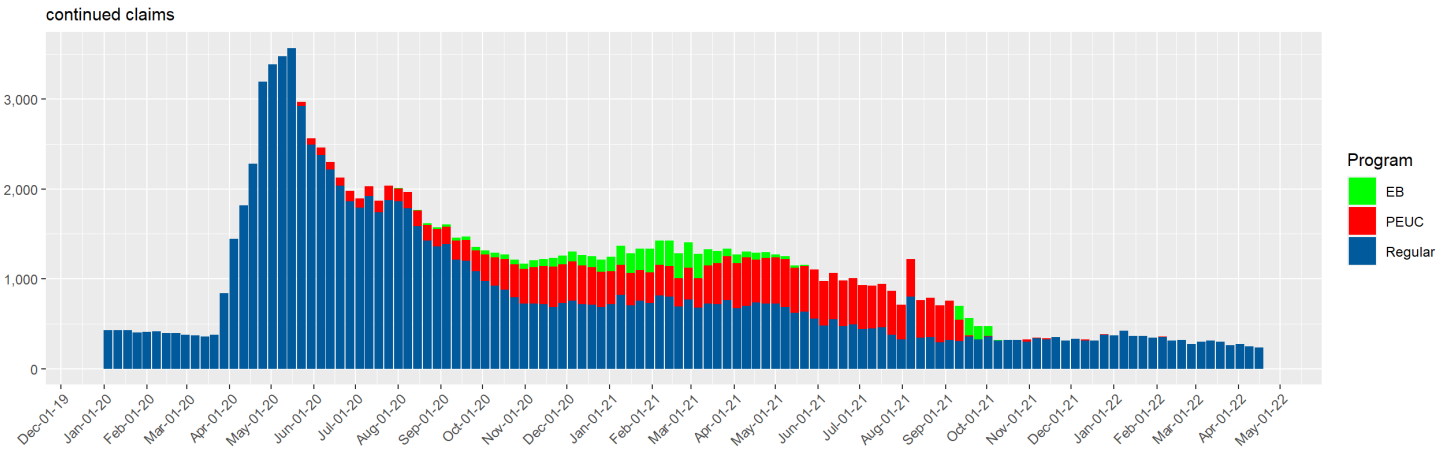
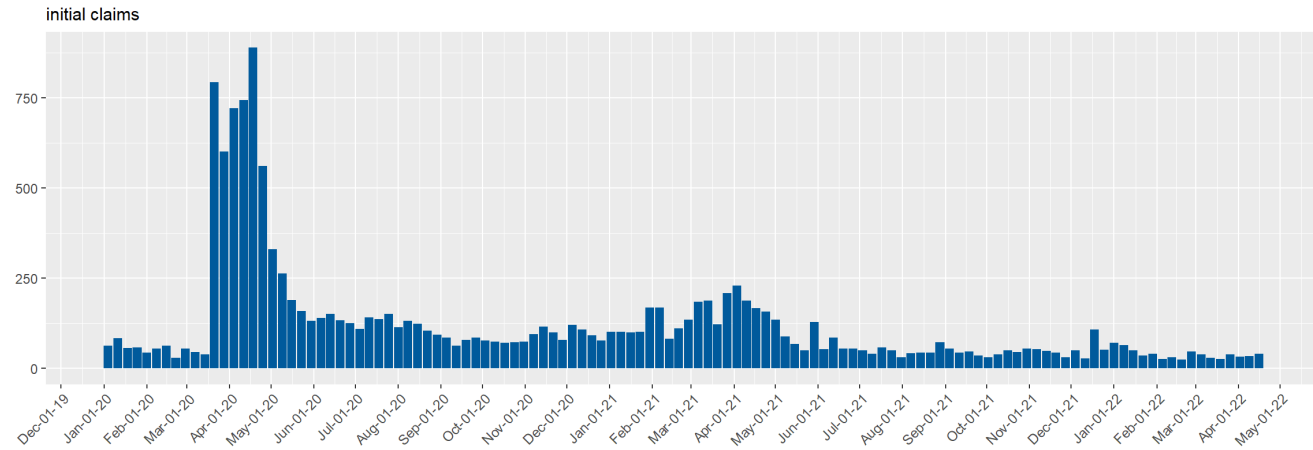


Program  
■ EB  
■ PEUC  
■ Regular

Source: DETR Internal Reporting

# UI Claims for Lyon County

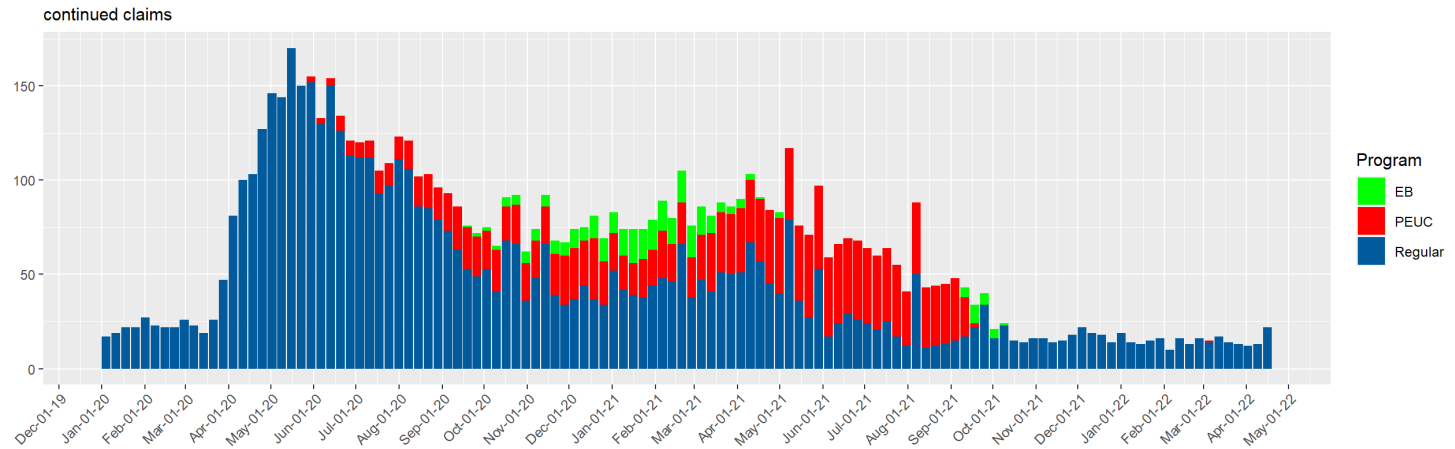
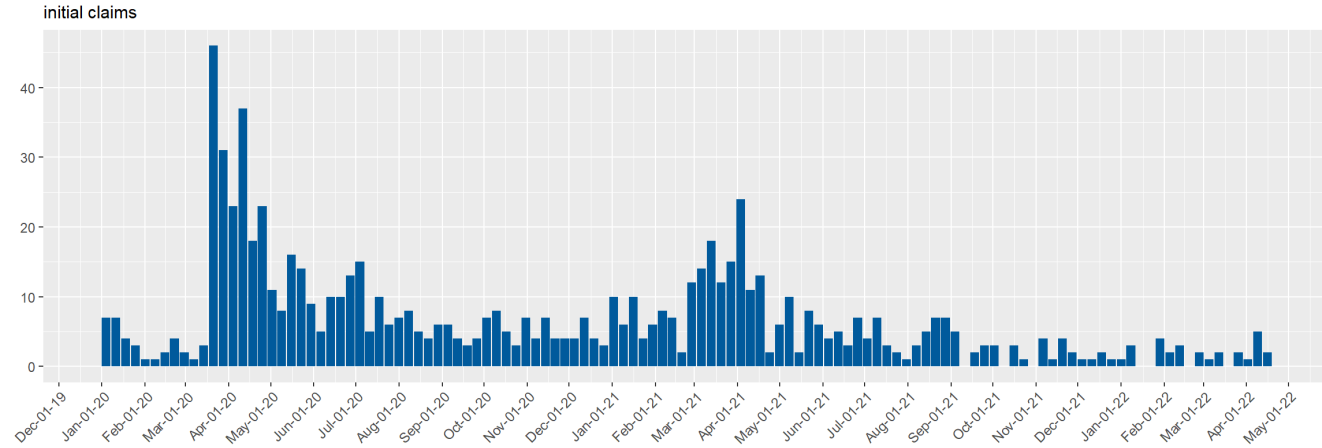
Lyon County Unemployment Insurance Claims by Week since January 2020



Source: DETR Internal Reporting

# UI Claims for Mineral County

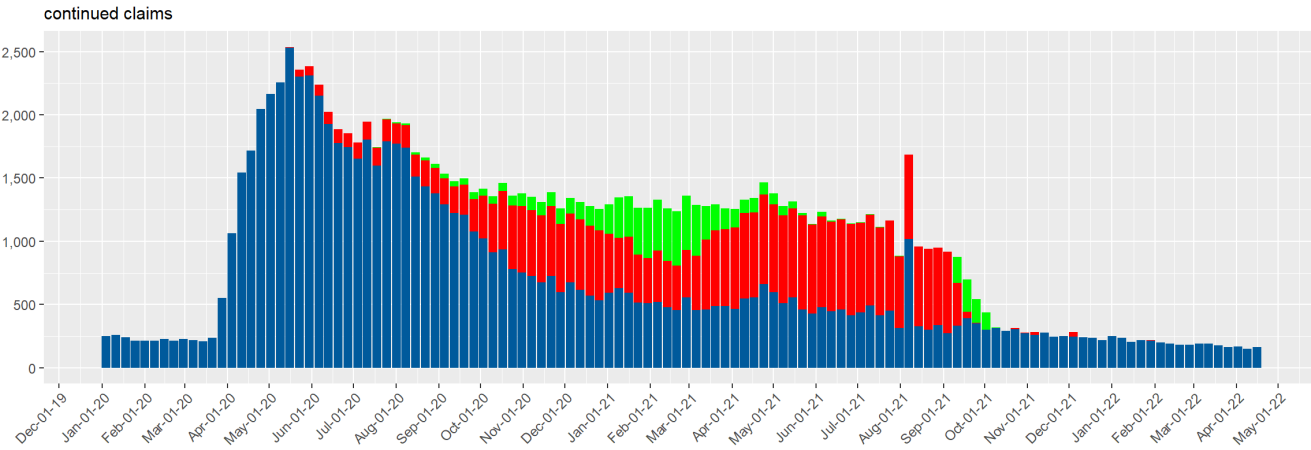
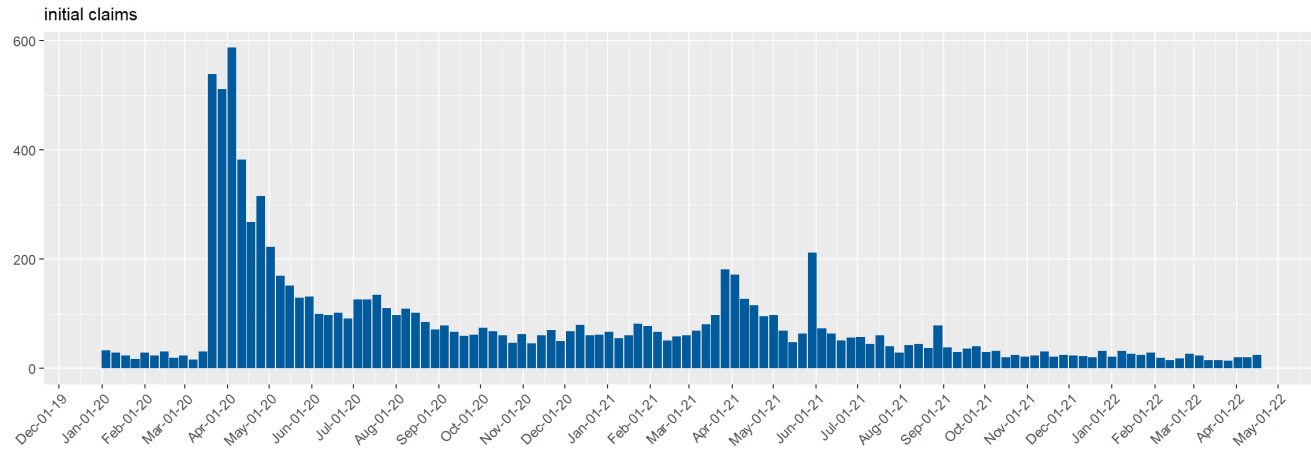
Mineral County Unemployment Insurance Claims by Week since January 2020



Source: DETR Internal Reporting

# UI Claims for Nye County

Nye County Unemployment Insurance Claims by Week since January 2020



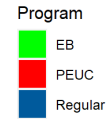
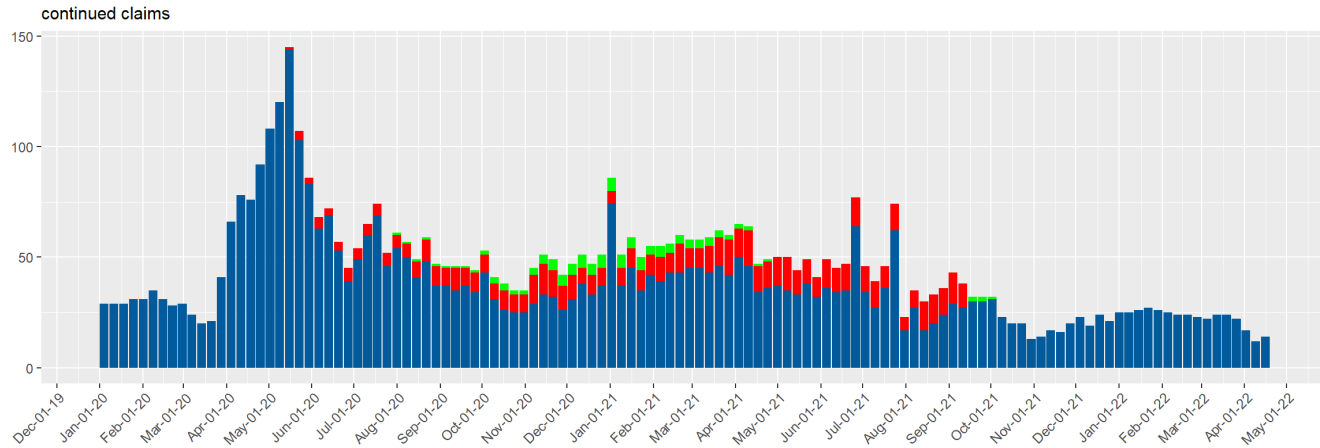
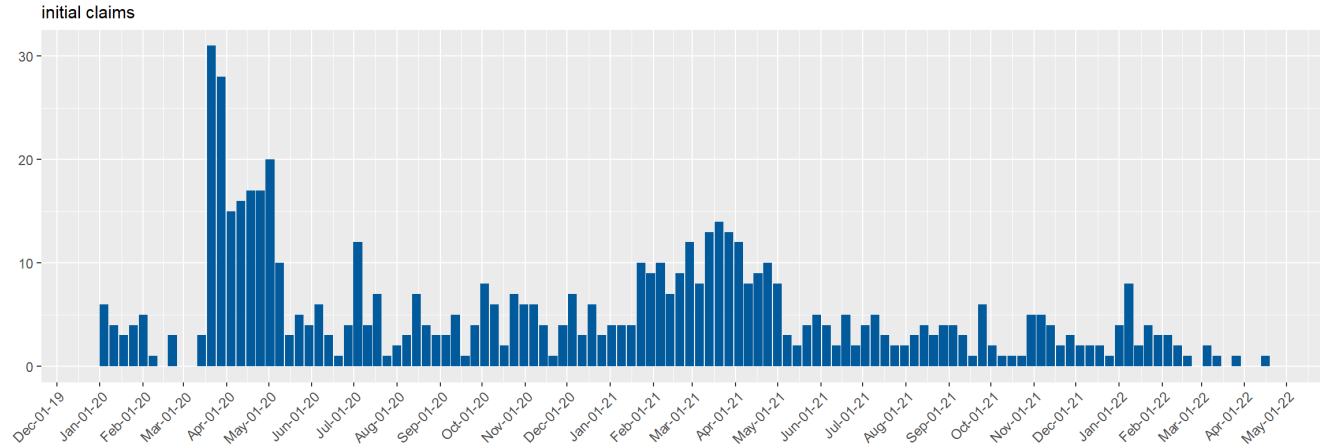
Program  
■ EB  
■ PEUC  
■ Regular

Source: DETR Internal Reporting



# UI Claims for Pershing County

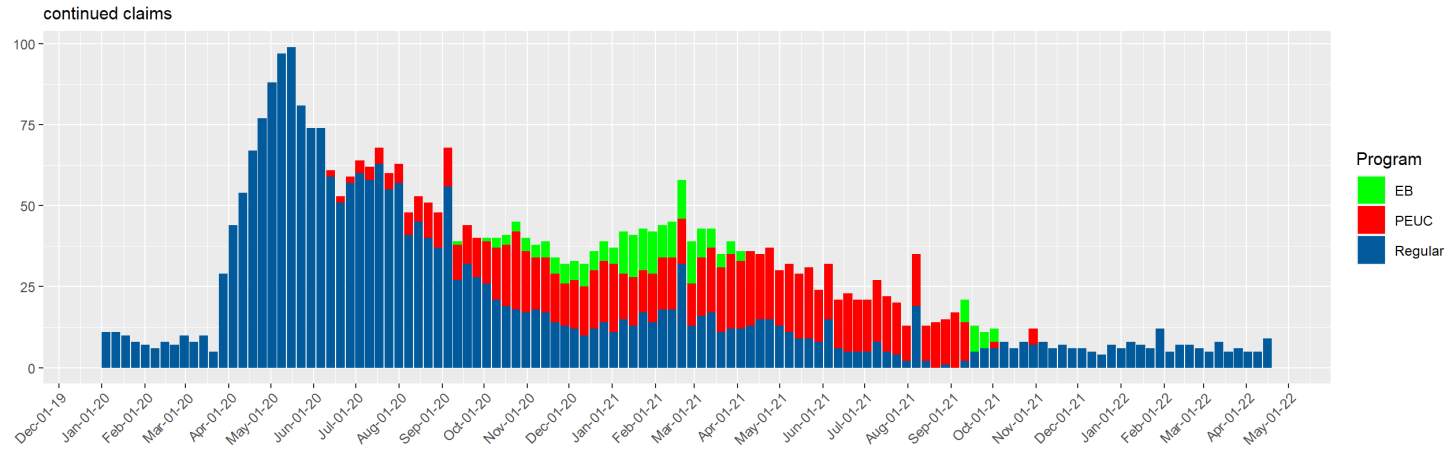
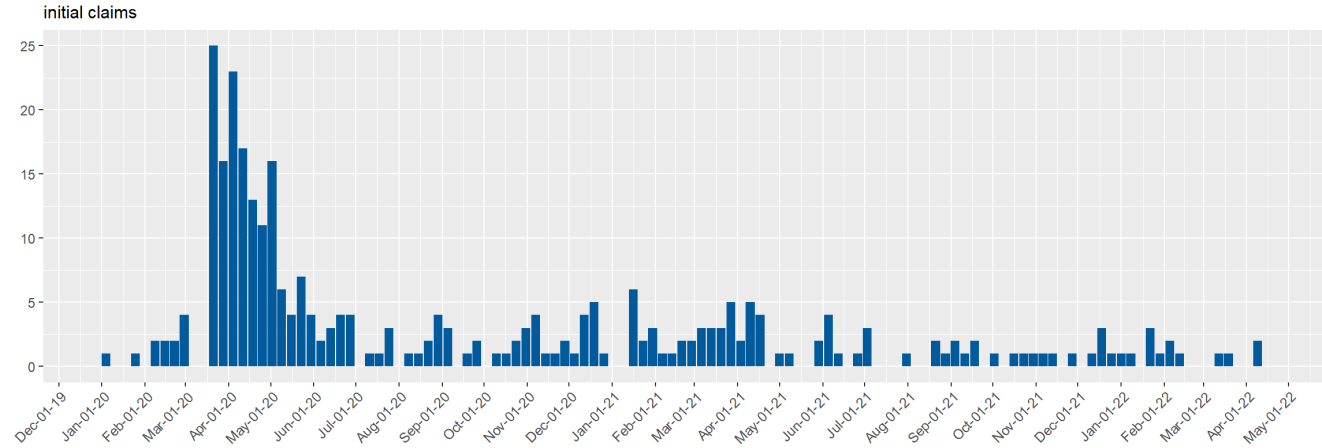
Pershing County Unemployment Insurance Claims by Week since January 2020



Source: DETR Internal Reporting

# UI Claims for Storey County

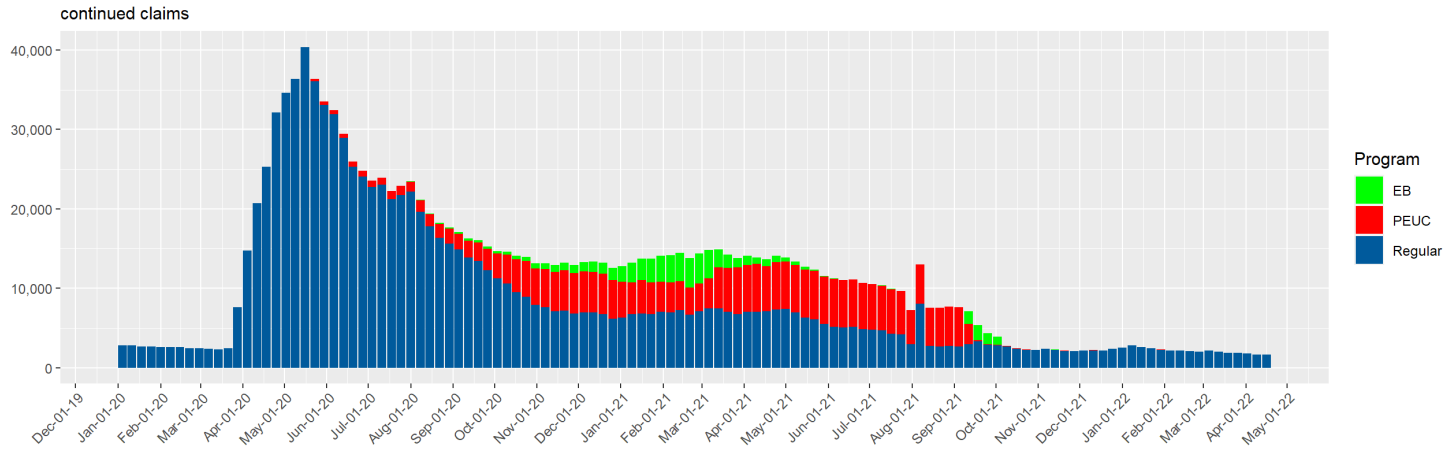
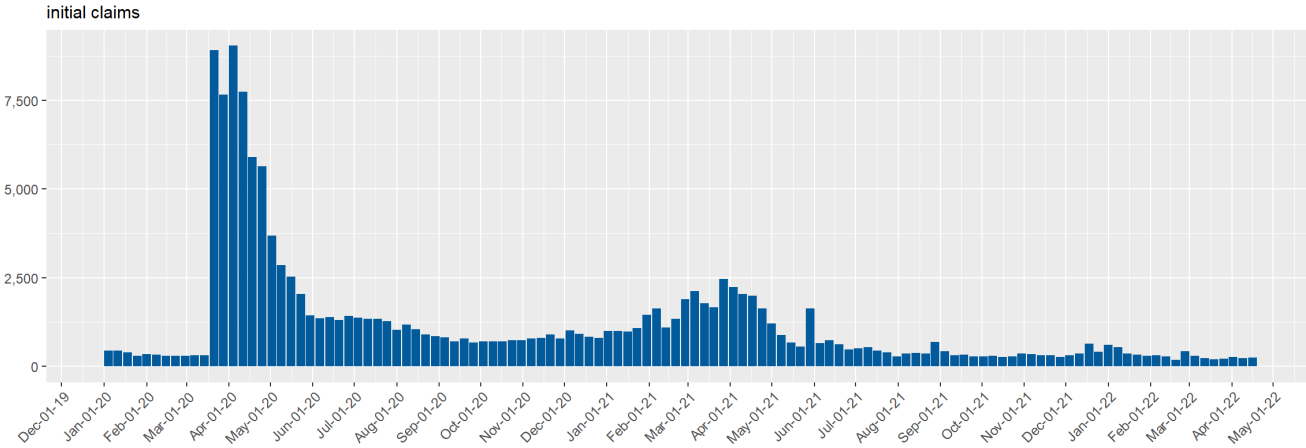
Storey County Unemployment Insurance Claims by Week since January 2020



Source: DETR Internal Reporting

# UI Claims for Washoe County

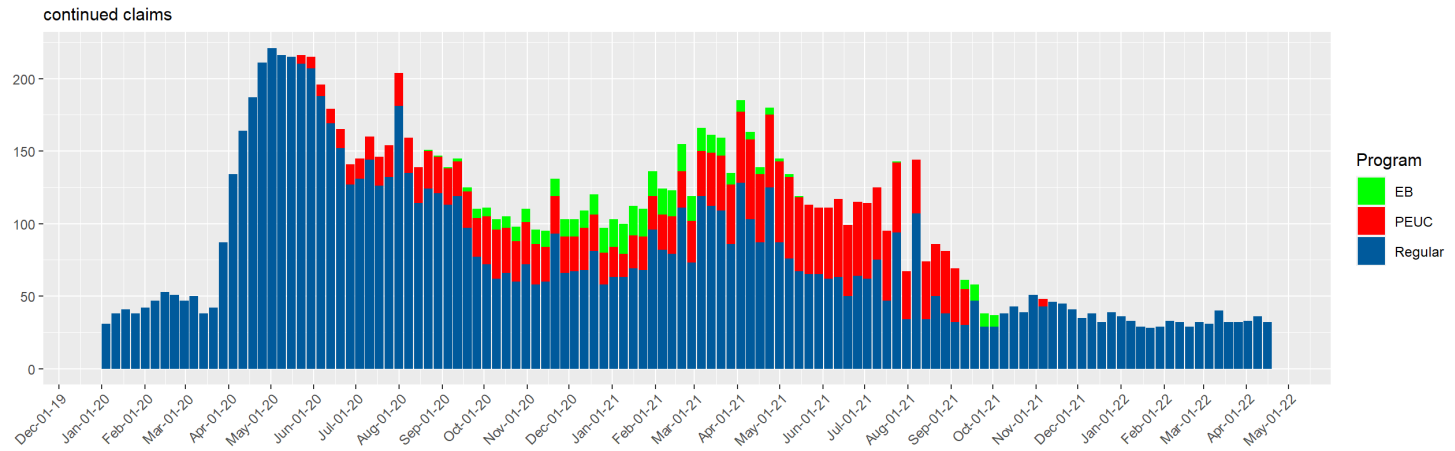
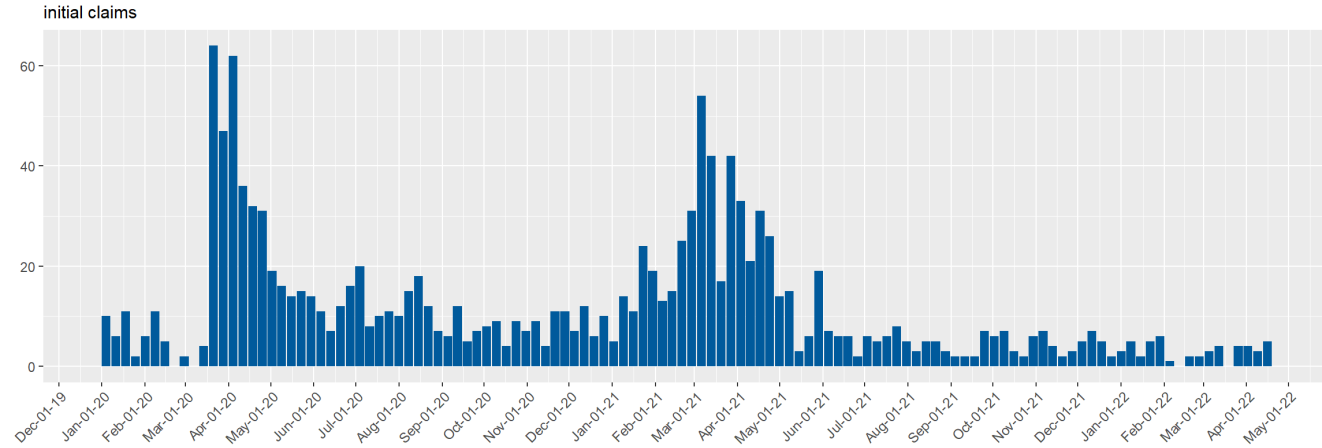
Washoe County Unemployment Insurance Claims by Week since January 2020



Source: DETR Internal Reporting

# UI Claims for White Pine County

White Pine County Unemployment Insurance Claims by Week since January 2020



Source: DETR Internal Reporting

# Data Dashboard Page

In effort to limit the overall length of this report, links to our interactive reports are below.

## Weekly Reports

### Weekly Claims Dashboard

The claims data contained on the ETA 539 report are used in current economic analysis of unemployment trends in Nevada.

### Weekly Claims by County

The claims data contained in this dashboard provide unemployment insurance trends by county in the State of Nevada. This dashboard allows for exploration of these trends.

## Monthly Reports

### Monthly Claims Dashboard

The ETA 5159 report contains monthly information on claims activities and on the number and amount of payments under state unemployment insurance laws. The data on this report provides the basis for many common UI measures such as average duration, exhaustion rates, weeks compensated, and benefits paid. This dashboard allows for exploration of these measures and trends in the State of Nevada.

### Monthly Claims Demographics

The ETA 203 report provides information about the characteristics of Unemployment Insurance (UI) claimants in Nevada. This data is useful in describing the population of claimants and determining how that population changes over time and under various conditions. It can also be compared with characteristic figures of the total unemployed as published by the Bureau of Labor Statistics (BLS).

# Glossary of Terms

**Initial Claim:** Any notice of unemployment filed to request a determination of eligibility for unemployment insurance benefits, or to begin a subsequent period of eligibility within a period of eligibility. Initial claims measure emerging unemployment in the state.

**Additional Claim:** An initial Claim which reopens a previously existing claim, where the claimant stopped filing due to intervening employment.

**Reopened Claim:** A reopened claim is filed if you have previously filed a claim but never submitted any weekly claims.

**Continued Claim:** After an initial claim determines a claimant is eligible for unemployment insurance benefits, the claimant's weekly benefit claims are counted under continued claims. Continued claims in aggregate represents the insured unemployed receiving benefits in the state, and is used for economic purposes.

## Credits

Special thanks to all the R and RStudio developers that built the packages to make this possible!

Packages used in this report: xaringan, xaringantheme, tidyverse, rmarkdown, viridis, scales, data.table, RcppRoll, kableExtra, knitr, patchwork, ggforce, ggthemes

Prepared by:  
Department of Employment, Training & Rehabilitation  
Research & Analysis Bureau