

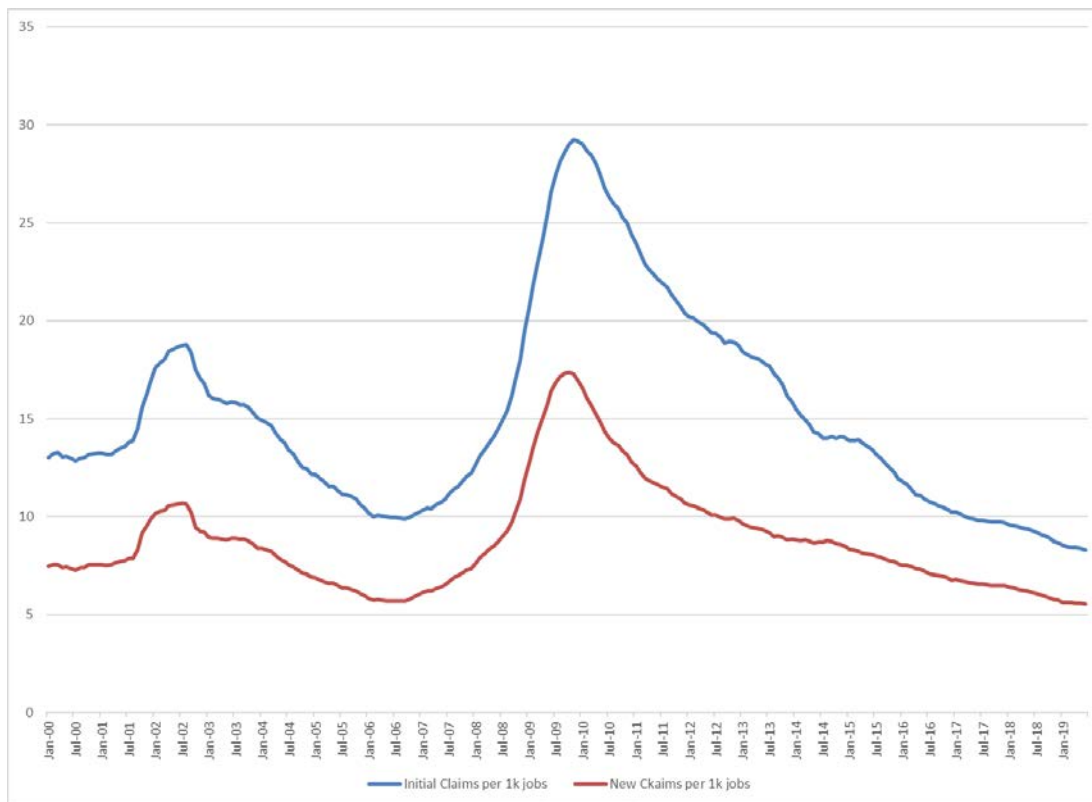
Research Notes



Initial and New Claims per Job
Jeremey Hays, Economist

Note: 2019:80
July 17, 2019

Initial Claims Activity Relative to the Employment Base at Record Low



- With data from the Nevada unemployment insurance (UI) system, claims activity in Nevada is continuing its year over year declines, though there is some question as to how much more room for improvement, if any, there might be.
- The metrics presented in the above graph are the initial claims for UI benefits and new claims for UI benefits per 1,000 jobs in the Silver State. These metrics give us a more concrete understanding of the health of the labor market than the raw claims levels.
- Since reaching the recessionary peak of more than five initial claims per 1,000 jobs in late-2009, the ratio has been in decline. Over the last several years, the ratio has fallen well below the historical average. The same is true of the trend in new claims, which peaked at just over 17 claims per 1,000 jobs in 2009, and has been declining ever since.
- Perhaps the most interesting piece of information from this graph is the difference between these two metrics. In the post-recession era, the gap between initial claims and new claims is shrinking. This indicates that fewer additional claims are being filed. What this means is that fewer people may be experiencing intermittent bouts of unemployment. This suggests that people who claim UI benefits are finding employment and holding the employment that they are finding.

Research Notes



This workforce product was funded by a grant awarded by the U.S. Department of Labor's Employment and Training Administration. The product was created by the recipient and does not necessarily reflect the official position of the U.S. Department of Labor. The U.S. Department of Labor makes no guarantees, warranties, or assurances of any kind, express or implied, with respect to such information, including any information on linked sites and including, but not limited to, accuracy of the information or its completeness, timeliness, usefulness, adequacy, continued availability, or ownership. This product is copyrighted by the institution that created it. Internal use by an organization and/or personal use by an individual for non-commercial purposes is permissible. All other uses require the prior authorization of the copyright owner.



NevadaWorkforce.com

 [@NVLaborMarket](https://twitter.com/NVLaborMarket)

P: (775) 684 - 0450

