

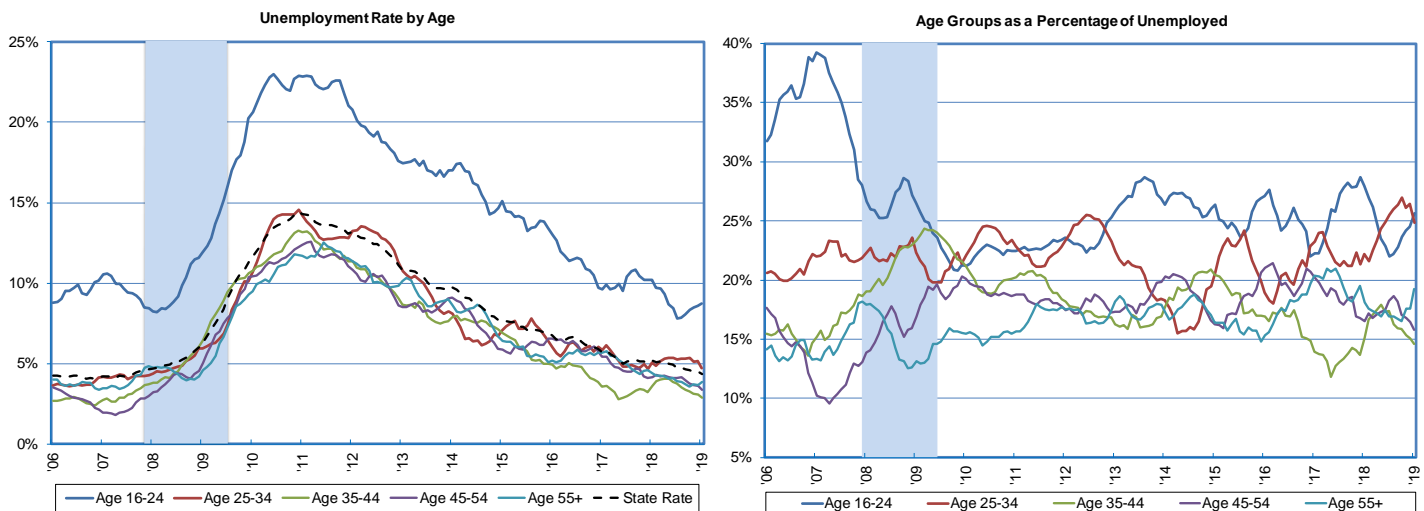
# Research Notes



Unemployment Rate by Age  
Michael La Rue, Economist

Note: 2019:21  
March 4, 2019

## Unemployment Rates in All Age Groups are Returning to Historical Levels



- Information from the monthly Current Population Survey (CPS), sponsored by the Census Bureau and the Bureau of Labor Statistics, allows for the analysis of the unemployment rate by age in Nevada, and the percentage that each age group represents in the unemployed. Data from the CPS unemployment rate by age estimates are examined from 2005 through January 2019 using a 12-month moving average.
- The two charts above show the unemployment rate by age, and the unemployed of each age group as a percentage of the total unemployed. These will show differences in the unemployment rates of each age group, and if specific age group has been increasing or decreasing as a percentage of the unemployed.
- On a state level unemployment rates are returning to the historical averages. In January 2018 the unemployment rate was 4.4 percent while the average from 1996 through 2006 was 4.8 percent.
- For the 16-24-year-old age group unemployment reached 23 percent in June of 2010, and was the highest of any of the age groups. In January 2019 the unemployment rate for this age group was 8.8 percent, comprising 25.6 percent of the unemployed, and comprised 12.8 percent of the Nevada labor force.
- As a percentage of the unemployed the 16-24 age cohort went from being 39.3 percent of the unemployed in January 2007 to 20.8 percent of the unemployed in November 2009. Over the same time, they went from being 15.7 percent to 12.6 percent explaining some of this decrease.
- For the 25-34 age group the unemployment rate was 4.7 percent in January 2019. They comprised 24.8 percent of the unemployed increasing from 20.6 percent of the unemployed in January 2006.
- The unemployment rate for the 35-44 age group was 2.9 percent in January 2019 down from 3.6 percent in January the previous year. From November 2006 to May 2009 there was a notable increase in this groups percentage of the unemployed going from 13.6 percent in to 24.2 percent. Since June of 2009 the percentage of unemployed has averaged approximately 17.8 percent, and is now 14.6 in January 2019.
- Among the 45-54 age group there was a similar increase in the percentage of the unemployed for this age group increasing from 9.6 percent in April 2007 to 20.3 percent of December 2009. Since then the percentage of unemployed has trended downward to 15.8 percent in January 2019. The unemployment rate of 3.4 percent in January 2019 is lower than the previous year's rate of 4.2 percent.

# Research Notes



- The 55 and older age group had an unemployment rate of 3.9 percent in January 2019. This group has seen an upward trend in their percentage of the unemployed going from 14.1 percent in January 2006 to 19.2 percent in January 2019. There has been a corresponding increase in their percentage of the labor force as they have gone from 15 percent in January 2006 to 21.9 percent in January of 2019.
- Nevada Job Connect offers employment services including help with job searches, resume preparation, interview skills, resource centers, skills assessment, proficiency testing, and training for a new job. Their website has more information at <http://www.nevadajobconnect.com/>.

This workforce product was funded by a grant awarded by the U.S. Department of Labor's Employment and Training Administration. The product was created by the recipient and does not necessarily reflect the official position of the U.S. Department of Labor. The U.S. Department of Labor makes no guarantees, warranties, or assurances of any kind, express or implied, with respect to such information, including any information on linked sites and including, but not limited to, accuracy of the information or its completeness, timeliness, usefulness, adequacy, continued availability, or ownership. This product is copyrighted by the institution that created it. Internal use by an organization and/or personal use by an individual for non-commercial purposes is permissible. All other uses require the prior authorization of the copyright owner.