

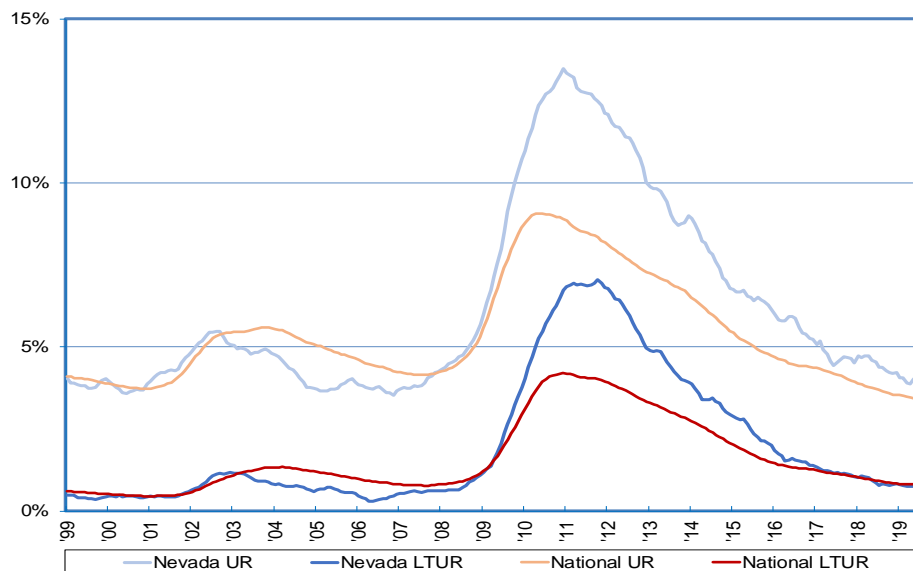
Research Notes



Long-Term Unemployment Rate
Michael La Rue, Economist

Note: 2019:106
October 16, 2019

Long-Term Unemployment Rate for Nevada is Trending with the Nation



- Information from the monthly Current Population Survey (CPS), sponsored by the Census Bureau and the Bureau of Labor Statistics (BLS) enables the analysis of the long-term unemployment rate (LTUR) in Nevada in the goods producing industries, and service providing industries. Long-term unemployment is defined as being unemployed for 27 weeks or more.
- From 1999 through the end of 2008 the LTUR in Nevada averaged 0.6 percent, and the unemployment rate averaged 4.3 percent. In August 2019 the LTUR for the state was 0.8 percent unchanged from August 2018. The unemployment rate for the state was 4.4 percent in August 2018 decreasing to 4.0 percent in 2019.
- For the nation the average over the period from 1999 through the end of 2008 was 0.9 percent for the LTUR, and 4.6 percent for the unemployment rate. The national LTUR in August 2019 was 0.8 percent down from 0.9 percent in August 2018. Over the same time, the national unemployment rate decreased to 3.4 percent from 3.7 percent.
- Nevada Job Connect offers services for finding jobs including help with job searches, resume preparation, interview skills, resource centers, skills assessment, proficiency testing, training, and potential purchase of work related items required for a new job. Their website has more information at <http://www.nevadajobconnect.com/>.

This workforce product was funded by a grant awarded by the U.S. Department of Labor's Employment and Training Administration. The product was created by the recipient and does not necessarily reflect the official position of the U.S. Department of Labor. The U.S. Department of Labor makes no guarantees, warranties, or assurances of any kind, express or implied, with respect to such information, including any information on linked sites and including, but not limited to, accuracy of the information or its completeness, timeliness, usefulness, adequacy, continued availability, or ownership. This product is copyrighted by the institution that created it. Internal use by an organization and/or personal use by an individual for non-commercial purposes is permissible. All other uses require the prior authorization of the copyright owner.