

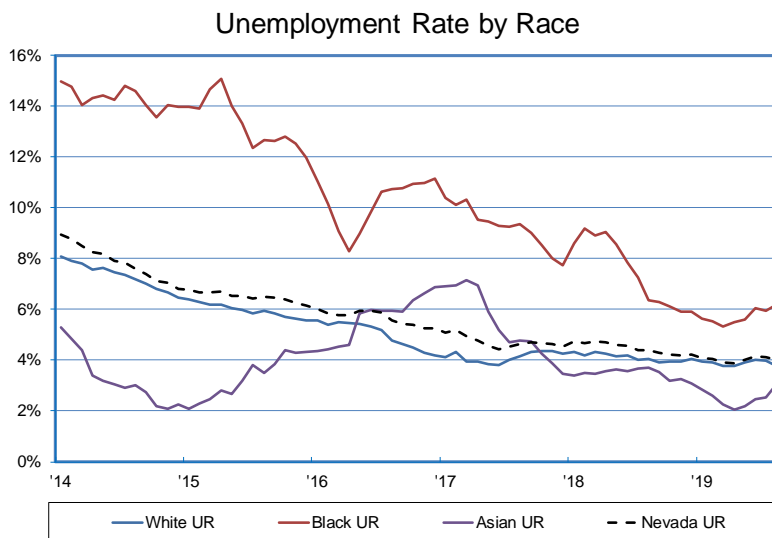
# Research Notes



Unemployment Rate by Race  
Michael La Rue, Economist

Note: 2019:105  
October 16, 2019

## Unemployment Rates Have Been Declining for all Races and Ethnicities



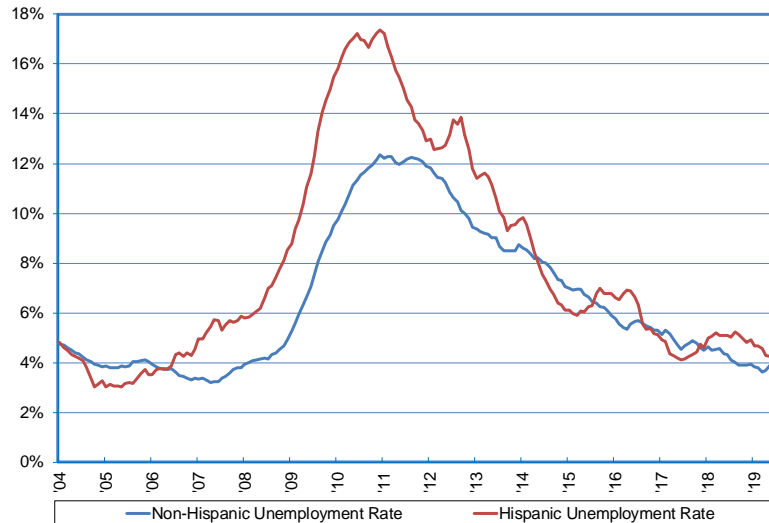
- Data from the monthly Current Population Survey (CPS), sponsored by the Census Bureau and the Bureau of Labor Statistics (BLS) permits for the analysis of the unemployment rate by race in Nevada. CPS estimates are available since 2013, and are examined from January 2014 to June 2019 using a 12-month moving average. A moving average is used to account for some of the volatility in the data caused by small sample sizes.
- The unemployment rates for all races and ethnicities has been declining over the period examined from January 2014 to August 2019, and have been following a similar trend to the total state rate over the same time. The state rate decreased from 8.9 percent in January 2014 to 4.0 percent in August 2019.
- The unemployment rate for Asians in Nevada went from approximately 5.3 percent to 3.1 percent over the time examined, and is one of the lowest rates. The average unemployment rate over the time examined is 4.0 percent, and is the lowest average rate from January 2014 to August 2019.
- Blacks in Nevada have tended to have a higher unemployment rate, but have seen one of the largest decreases in unemployment from 15.0 percent to 6.2 percent over the time examined.
- The trend in unemployment for Whites has been a decrease going from 8.1 percent to 4.8 percent from January 2014 to August 2019. This ethnicity comprises the largest portion of the population, and trends most closely with the state rate.

*Continued next page.*

# Research Notes



**Hispanic & Non-Hispanic Unemployment Rate**



- The unemployment rate for Hispanic and Non-Hispanic is examined from January 2004 through August 2019. These rates follow similar trends to the state rate, and other rates examined.
- Hispanic unemployment rates went from a high of approximately 17 percent in early 2011 to 4.0 percent in August 2019. In May 2005 this unemployment rate reached a low of 3.0 percent.
- Non-Hispanic unemployment rates followed a similar trend decreasing from highs of approximately 12 percent in the middle of 2012 to 4.0 percent in August 2019. In April 2007 the lowest unemployment rate was reached at 3.2 percent.
- Nevada Job Connect offers services for finding jobs including help with job searches, resume preparation, interview skills, resource centers, skills assessment, proficiency testing, training, and potential purchase of work related items required for a new job. Their website has more information at <http://www.nevadajobconnect.com/>.

This workforce product was funded by a grant awarded by the U.S. Department of Labor's Employment and Training Administration. The product was created by the recipient and does not necessarily reflect the official position of the U.S. Department of Labor. The U.S. Department of Labor makes no guarantees, warranties, or assurances of any kind, express or implied, with respect to such information, including any information on linked sites and including, but not limited to, accuracy of the information or its completeness, timeliness, usefulness, adequacy, continued availability, or ownership. This product is copyrighted by the institution that created it. Internal use by an organization and/or personal use by an individual for non-commercial purposes is permissible. All other uses require the prior authorization of the copyright owner.