

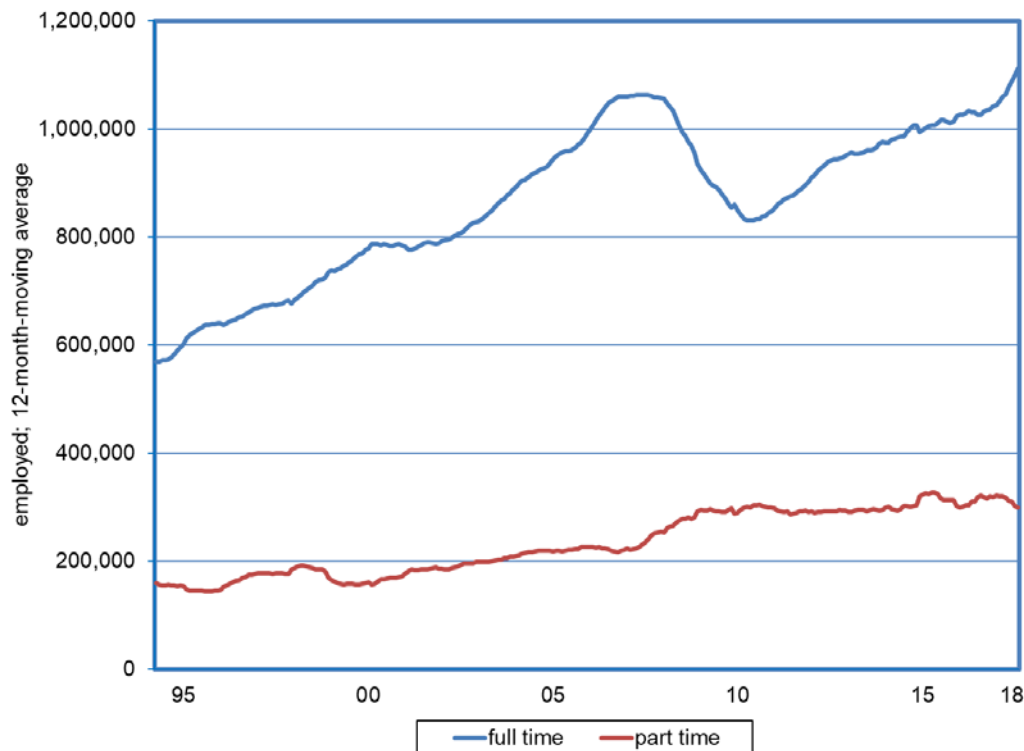
Research Notes



Full Time and Part Time Employment
Dionny McDonnell, Economist

Note: 2018:74
June 8, 2018

Full Time Employment in Nevada Reaches a New All Time High



- Information from the monthly Current Population Survey (CPS), sponsored by the Census Bureau and the Bureau of Labor Statistics, allows for the analysis of full time and part time employment in Nevada. Full time workers include those persons who usually work 35 hours or more. Part time workers include those who typically work less than 35 hours.
- Based upon results from the Current Population Survey (CPS) available since 1994, the number of Nevadans employed full-time topped out at 1,063,280 in April 2008; measured on a 12-month moving average. At this peak level, full-time employment represented 81.9% of the total. Silver State residents employed part-time numbered 235,500.
- By January 2011, full time employment fell to 831,150, for a cyclical decline of more than 232,130 from the peak. Part-time employment rose to 300,420 jobs. This resulted in an increase of 64,920 part time positions over the same period.
- As of May 2018, Nevadans employed full-time totaled 1,112,190 representing a new all time high. The number of Nevadans employed on a part-time basis, remains relatively steady, coming in at 299,210 in May.

Continues on next page

Research Notes



- In the Silver State, 88 percent of workers ages 25 to 54 work full time as of April 2018. During the same period, 81 percent of workers ages 55 and over work full time, while 61.4 percent of younger workers ages 16 to 24 work full time.
- Nevada employment gains have been concentrated in full-time positions. Currently, 78.8 percent of total employment is full-time, while part-time positions account for 21.2 percent.