

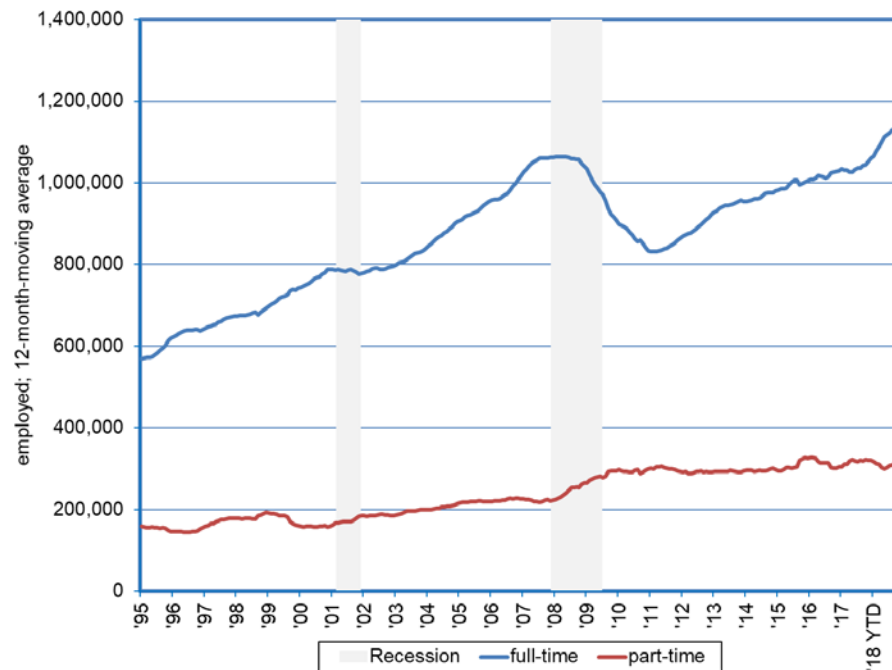
Research Notes



Full Time and Part Time Employment
Dionny McDonnell, Economist

Note: 2018:147
December 19, 2018

Full Time Employment in Nevada Trending Up, Part Time Employment Relatively Steady As of Late



- Information from the monthly Current Population Survey (CPS), sponsored by the Census Bureau and the Bureau of Labor Statistics, allows for the analysis of full time and part time employment in Nevada. Full time workers include those persons who usually work 35 hours or more during the week. Part time workers include those who typically work less than 35 hours during the week.
- Based upon results from the Current Population Survey (CPS), available since 1994, in December 2000 787,330 Nevadans worked full-time, while 157,960 worked part time; measured on a 12-month moving average. As the State was affected by the 2001 recession, full-time workers fell to 776,970 and part-time increased to 184,800 by December 2001. The number of Nevadans employed full-time topped out at 1,063,280 in April 2008. Silver State residents employed part-time numbered 235,500.
- As the 2007 recession took hold of the Silver State, by January 2011 full time employment fell to 831,150, for a cyclical decline of more than 232,130 from the peak. Part-time employment rose to 300,420 jobs. This resulted in an increase of 64,920 part time positions over the same period.
- As of November 2018, Nevadans employed full-time totaled 1,144,620. This is up from 1,051,940 a year ago. The number of Nevadans employed on a part-time basis, remains relatively steady as of late, coming in at 308,910 in November. Part-time is down from 321,000 last year.
- Nevada employment gains have been concentrated in full-time positions. In April 2008, full-time employment represented 81.9% of the total, and part-time 18.1%. Currently, 78.7 percent of total employment is full-time, while part-time positions account for 21.3 percent.