

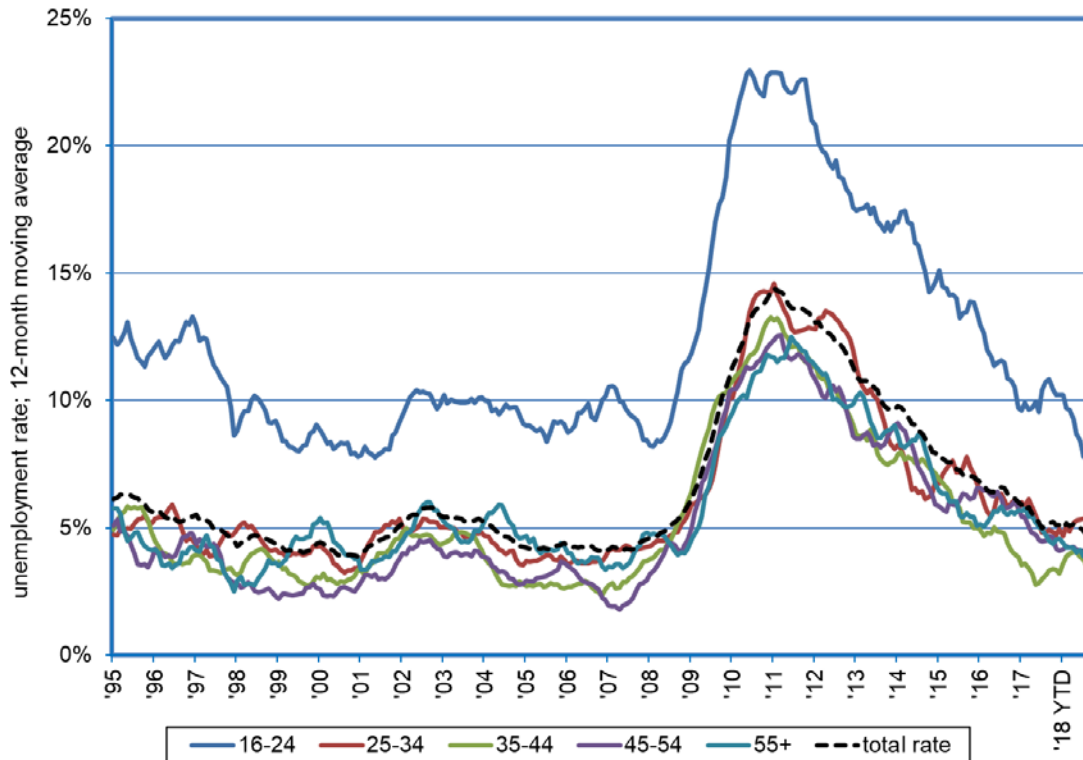
Research Notes



Unemployment Rate by Age
Dionny McDonnell, Economist

Note: 2018:113
September 20, 2018

Unemployment Rate in All Age Groups Returning to Typical Historical Levels



- Information from the monthly Current Population Survey (CPS), sponsored by the Census Bureau and the Bureau of Labor Statistics, allows for the analysis of the unemployment rate in Nevada across various age groups. CPS unemployment rate by age estimates are available since 1994.
- Overall, the unemployment rate in all age groups in the Silver State are returning to typical historical levels. In August 2018, out of the five age groups, three experienced a reduction in their unemployment rate over the year.
- Teens and young adults have an unemployment rate of 7.9%, this is about 3.6 percentage points higher than the other age groups. However, it is down from 10.7% a year ago. Last time the rate stood at 7.9% was in June 2001. The gap between the unemployment rate for Nevada's younger workers and that for the overall labor force stands at 1.7 in August 2018 compare to 2.1 a year ago.
- The unemployment rate for the 25-34 year old group stands at 5.3% in August 2018, up from 4.8% a year ago. The gap between the rate for this group and that for the overall labor force stands at 1.1 compare to 1.0 a year ago.
- The age group 35-44 year old has an unemployment rate of 3.5% in August 2018 up from 3.1% last year. The gap between the unemployment rate for this group and that for the overall labor force stands at 0.7 compare to 0.6 a year ago.

Continues on next page

Research Notes



- In August 2018, Nevadans in age group 45-54 years old have an unemployment rate of 4.2% down from 4.5% last year. The gap between the rate for this group and that for the overall labor force stands at 0.9 unchanged from previous year.
- Nevadans 55 years old and over, have an unemployment rate of 3.9% in August 2018, down from 4.7% a year ago. The gap between the rate for this group and that for the overall labor force stands at 0.8 compare to 0.9 a year ago.